

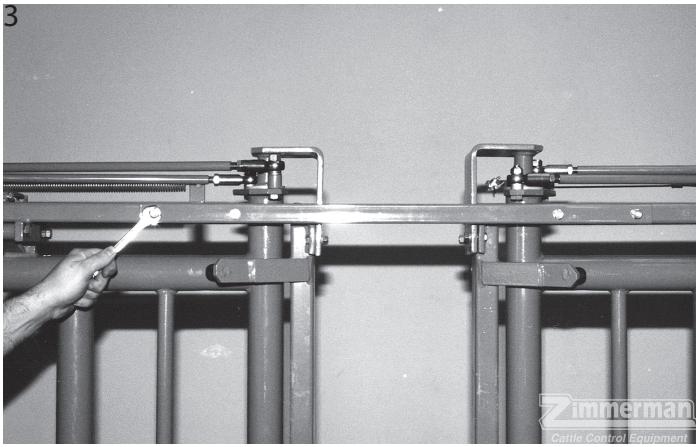


Cattle Control Equipment

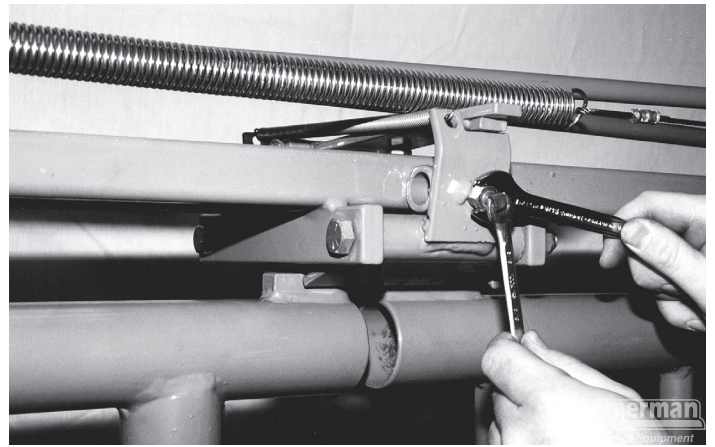


LS96 Milking Parlor Operator's Manual

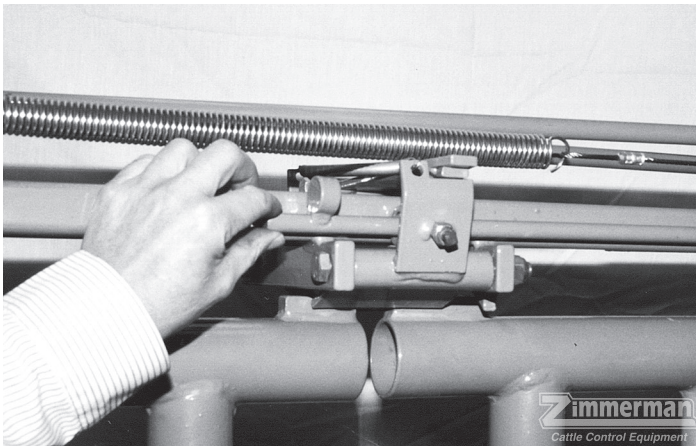
Includes Installation, Assembly, and Adjustment Instructions



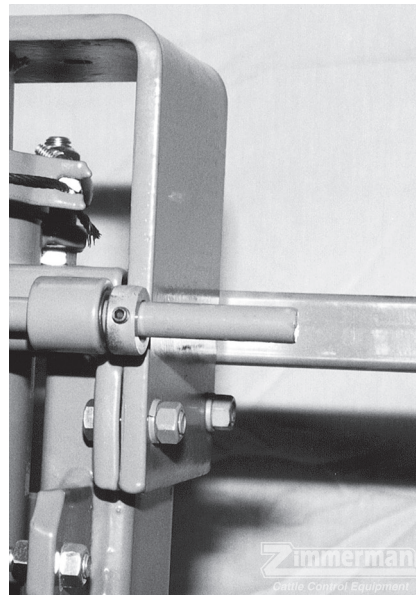
1. When left and right sections of stalls are securely fastened to concrete, join all units together by bolting braces in place as shown.



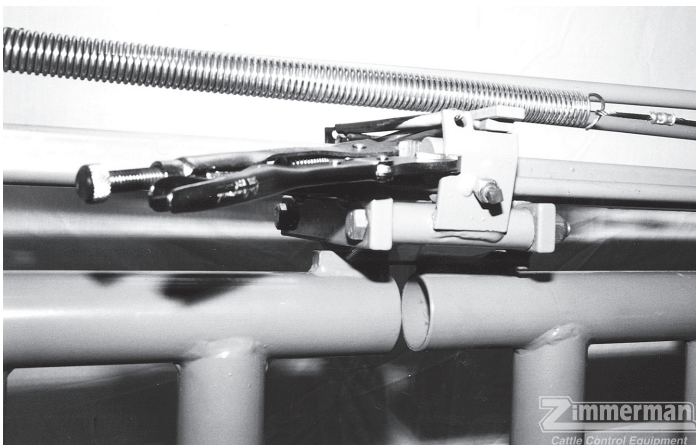
2. On the exit side, check to insure that the gate stop is properly adjusted. Stops should rest in the middle of the gate stop tabs. If required, loosen stop nut and turn adjustment bolt. When adjustment is made, tighten stop nut.



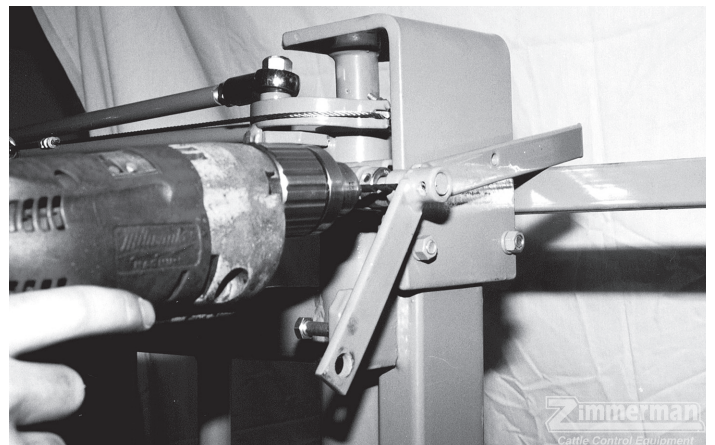
3. Insert gate release lever locking rod on right side, sliding rod through bushing at latch from the left as shown, then through bushing on right between the two gates.



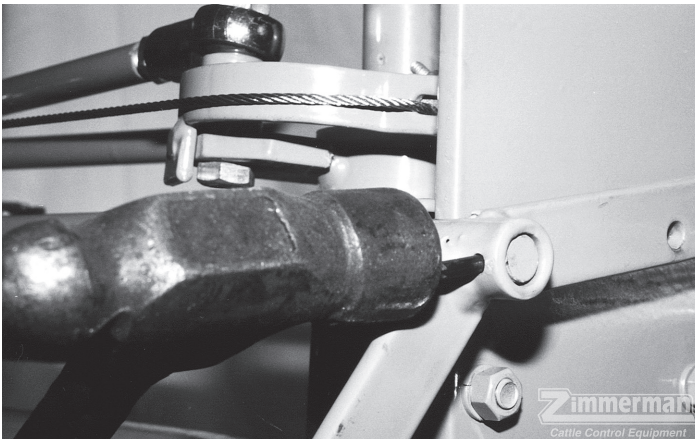
4. Slide locking collar on right gate locking rod and, leaving approximately 1/16" free space, lock collar on rod.



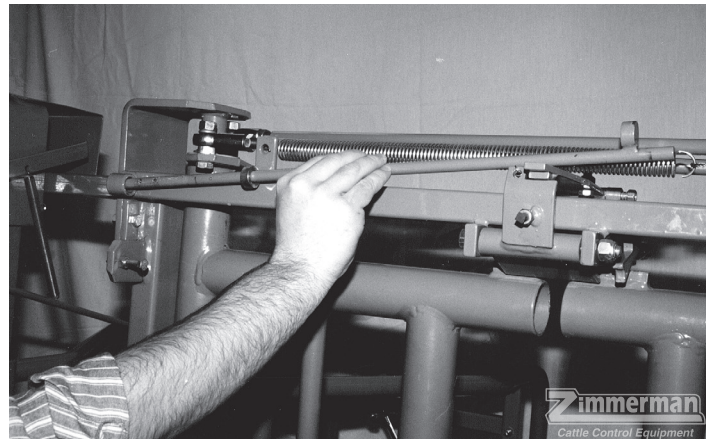
5. With gate latch in locked position, allow lobe on rod to rotate back against latch adjustment plate. Using vise grips hold lobe in place against plate



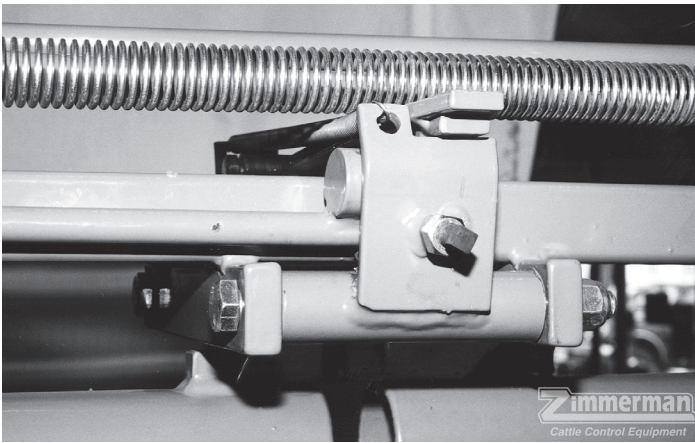
6. Position release lever pivot with long end resting on stall brace. Drill thru locking rod using a 3/16" bit.



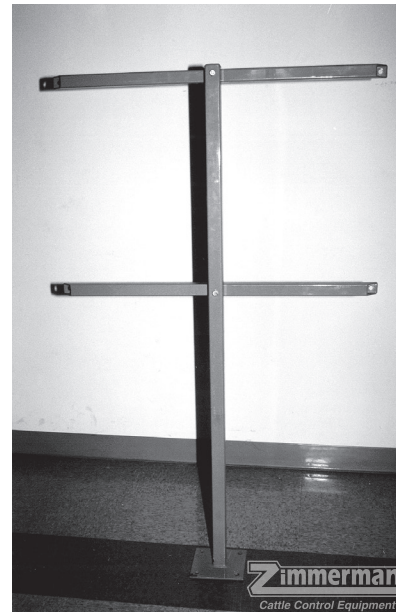
7. Drive the roll pin through the pivot and rod securing it in place.



8. Insert left gate release lever locking rod with locking collar on rod into center bushing first, then into gate bushing.



9. Following previous steps, secure locking collar. Clamp lobe to plate and fasten pivot onto rod.



10. On a flat surface, attach equipment rack cross braces to center support. Note that cross pieces must be bolted so that their ends are positioned to allow bolts to pass through to connect to rack sides.



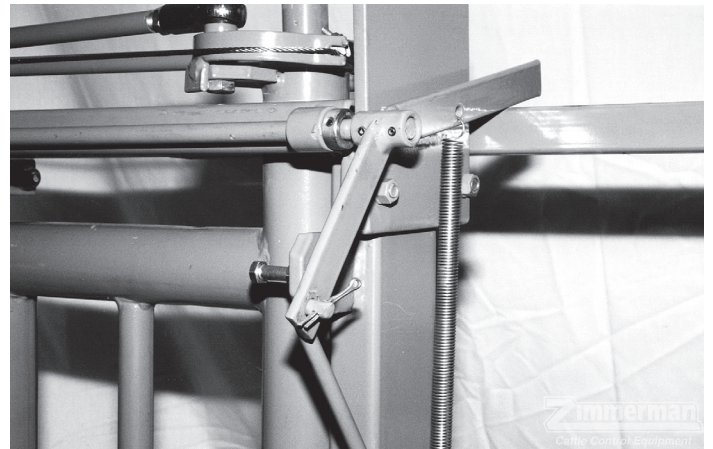
11. Position equipment rack fully at the top of the stall post. Tighten the top bolt (only) enough to hold rack in place. Additional adjustment will be done in next step.



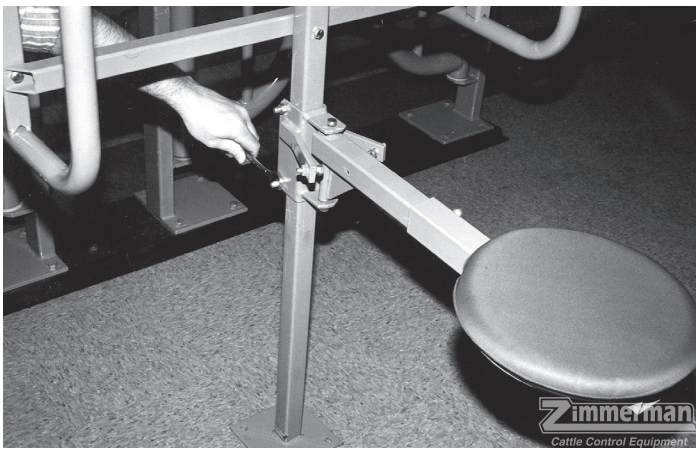
12. Bolt center support with cross bars to equipment rack sides. Loosen side clamp bolts and lower assembly onto floor. Tighten all side clamp bolts securing unit to stall posts. Bolt base plate of equipment rack center post to floor.



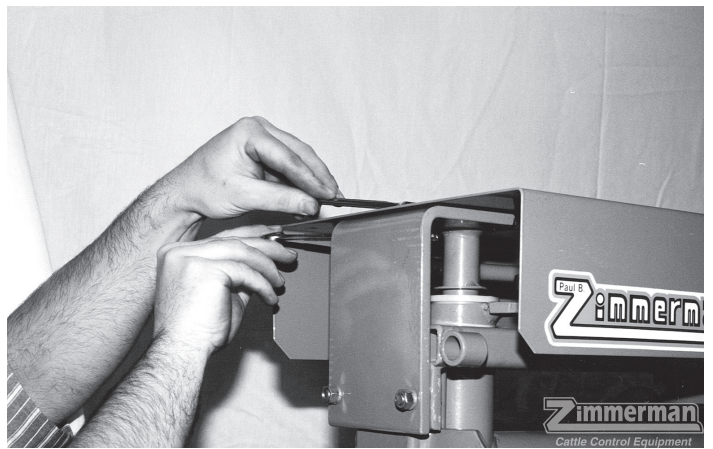
13. Pass both left and right release rods through their respective mounting brackets, and bolt brackets onto the top equipment rack cross brace.



14. Connect release rods to pivots as shown.



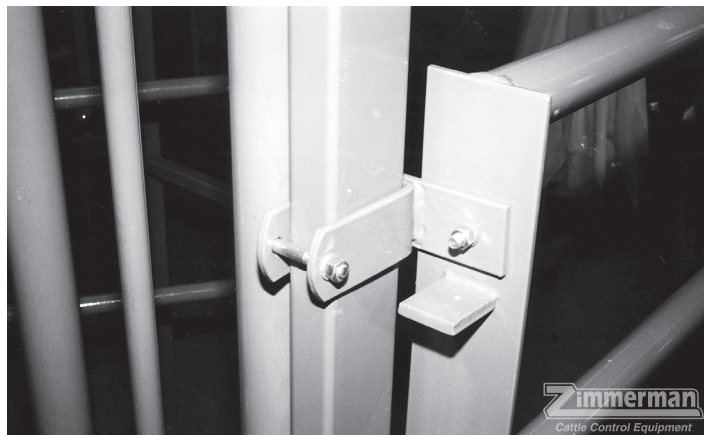
15. Attach optional seat onto equipment rack center post. Adjust seat swing if desired.



16. Bolt stall roof in place on both sides.



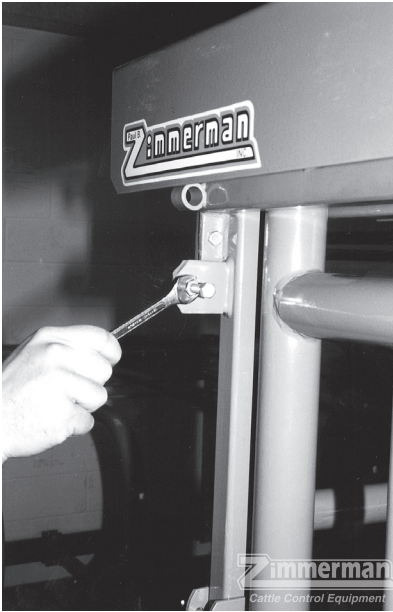
17. Attach mid-dividers using channel brackets.



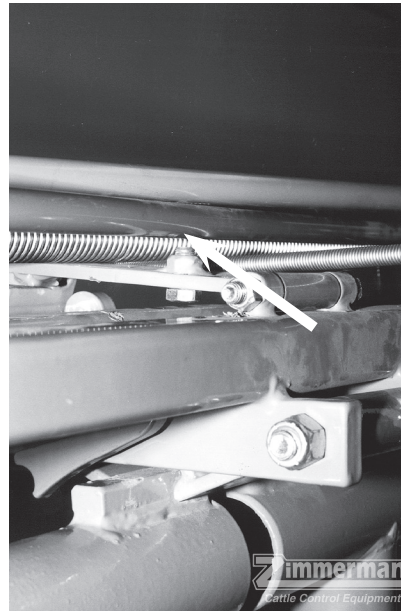
18. End dividers require brackets, shown in this photo.

Adjustments

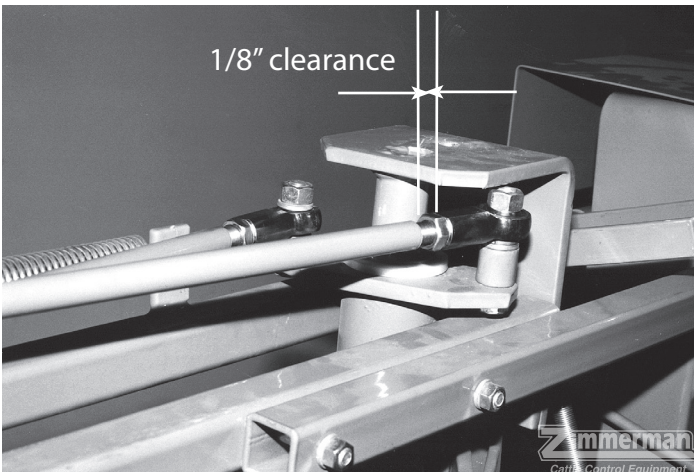
While all required adjustments are made prior to shipping there may be a need for some adjustments over time.



Gate swing is adjusted by loosening the stop nut, shown here, and turning the bolt in or out. Gate should hit stop bolt before the rod hits hinge shaft. See illustration below.



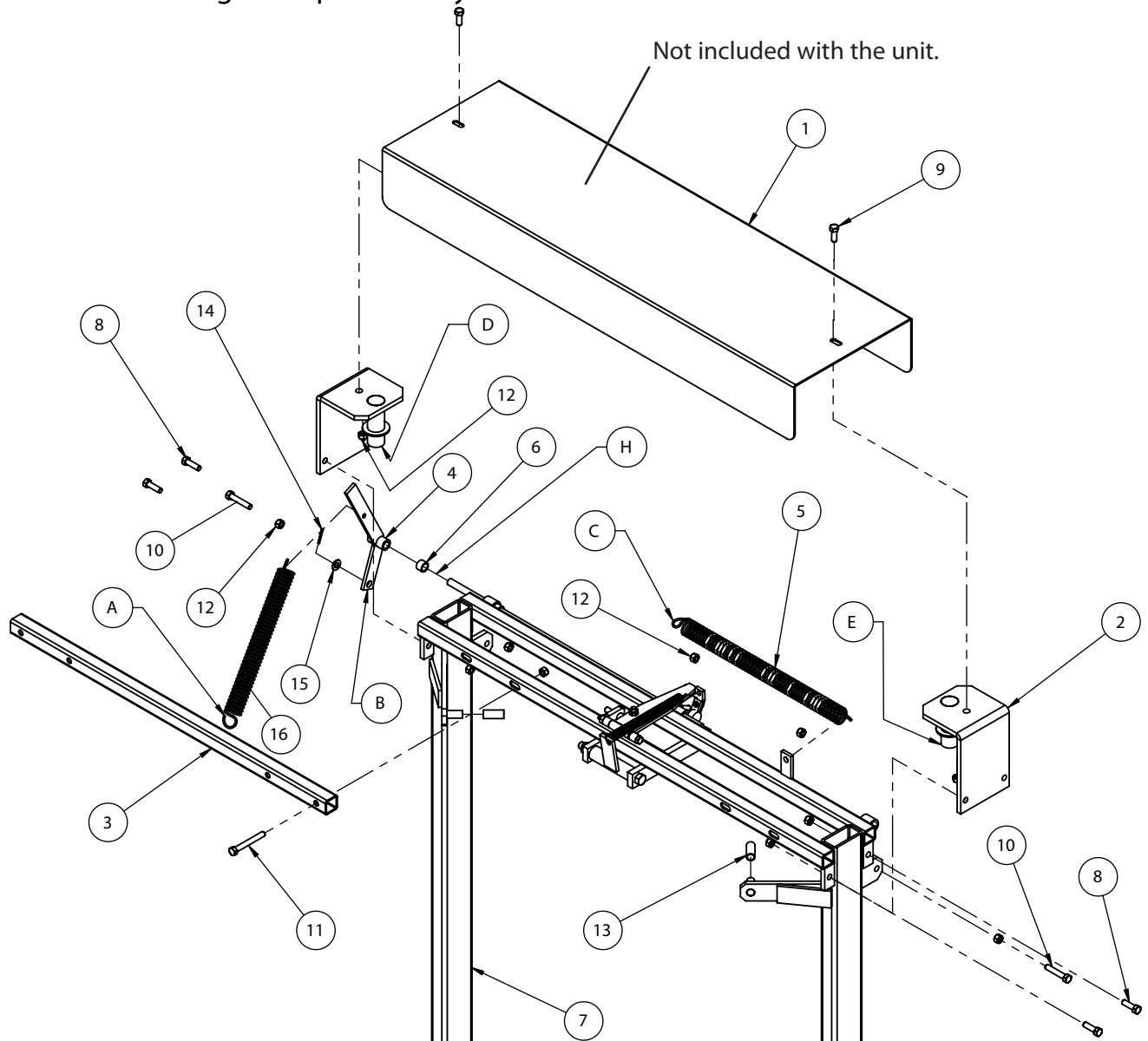
Automatic latch reset is adjusted by turning the bolt shown here.



In the event that gate alignment ever needs to be adjusted use the following procedure.

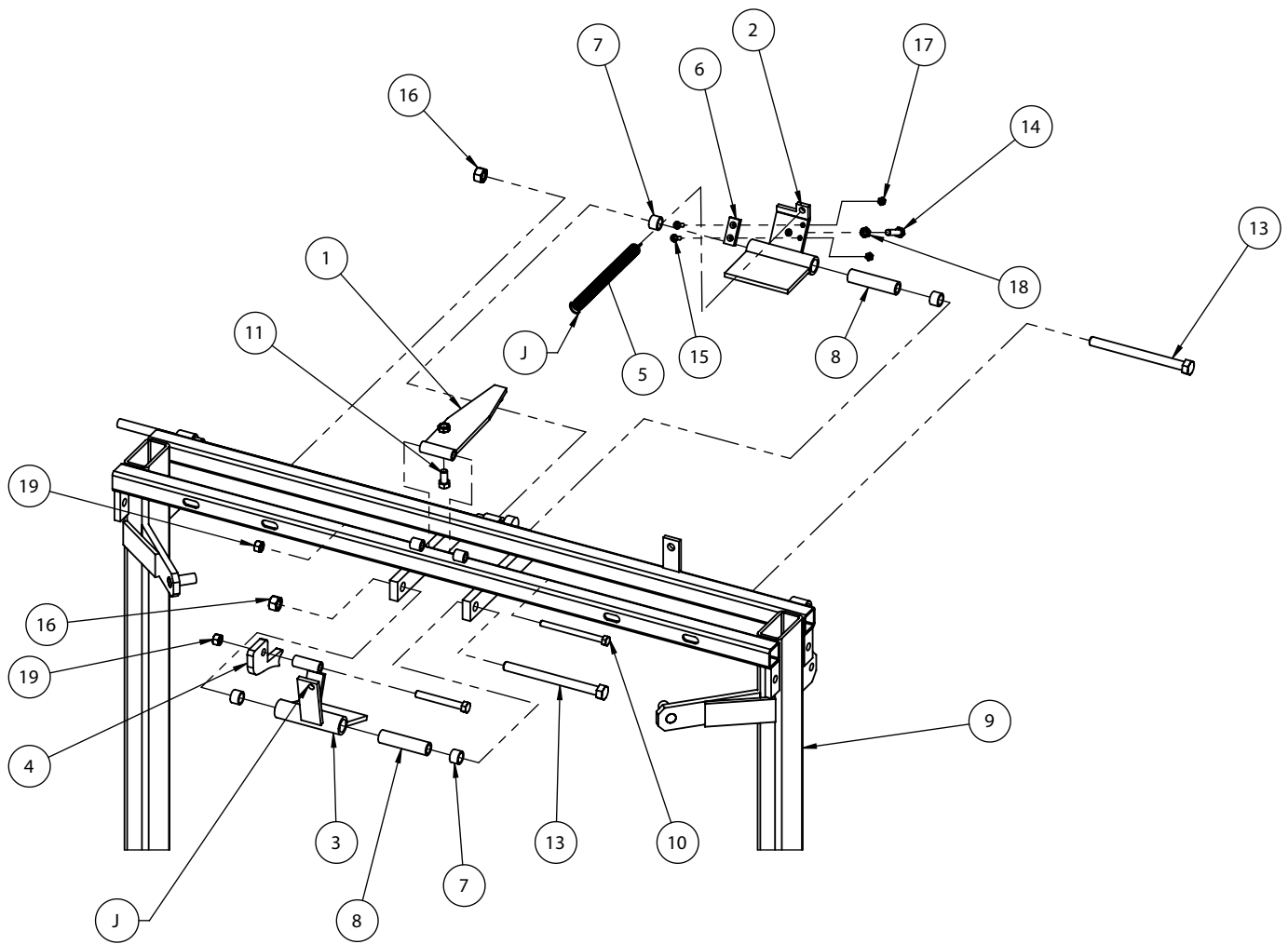
1. With the gates in the ready position (unlocked toward the stall entrance) loosen the jam nuts on the top (right) and bottom (left) tie rods on the exit side of the stall.
2. Remove the nuts securing the tie rods to the stall. Place the gate in the locked position. Remove both tie rods from their bolts.
3. Turn the bottom tie rod end in or out until it will fit comfortably on its bolt. Replace the bottom tie rod nut and tighten.
4. Follow these instructions on the top tie rod end.
5. Tighten jam nuts on both tie rod ends.

Figure 1A LS96 Headgate Top Assembly



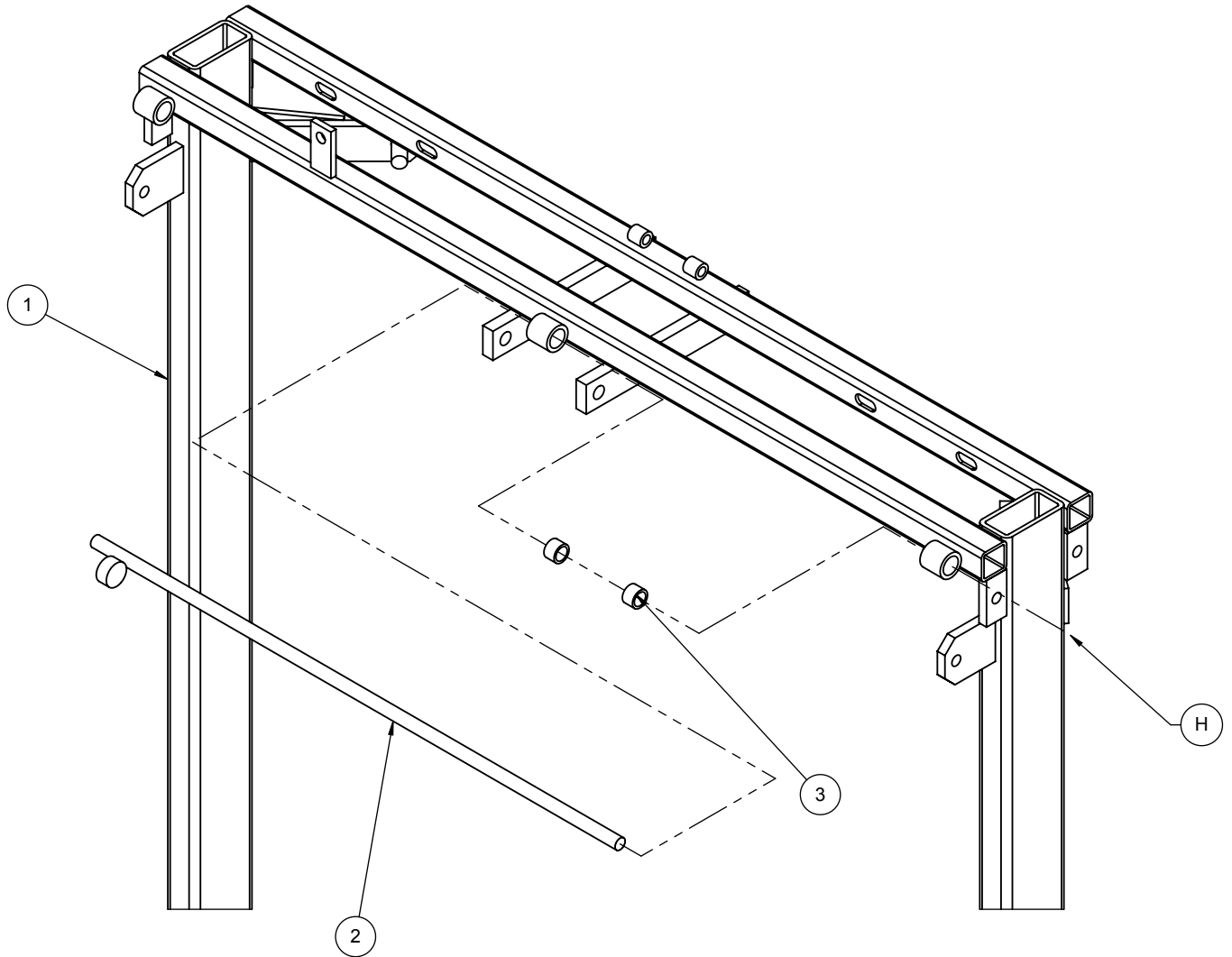
ITEM	QTY.	PART NUMBER	DESCRIPTION
1	1	LS96-7	Top Cover
2	2	LS96-3	Top Hinge Bracket
3	0.5	LS96-21	Contour Tube
4	1	LS96-19	Control Rod Arm
5	1	LS96-25	Door Return Spring
6	1	LS96-17	Brass Bushing
7	1	LS96-2	Main Frame
8	4	H5C38*114	3/8" x 1 1/4" Hex Bolt
9	2	H5C38*1	3/8" x 1" Hex Bolt
10	2	H5C38*2	3/8" x 2" Hex Bolt
11	1	H5C38*3	3/8" x 3" Hex Bolt
12	11	NC38	3/8" Hex Nut
13	2	1008	1/2" Hose 1 1/2" Long
14	1	CT18*1	1/8" x 1" Cotter Pin
15	1	FW38	3/8" Flat Washer
16	1	LS96-26	Control Handle Return Spring

Figure 1B LS96 Headgate Top Assembly: Latches



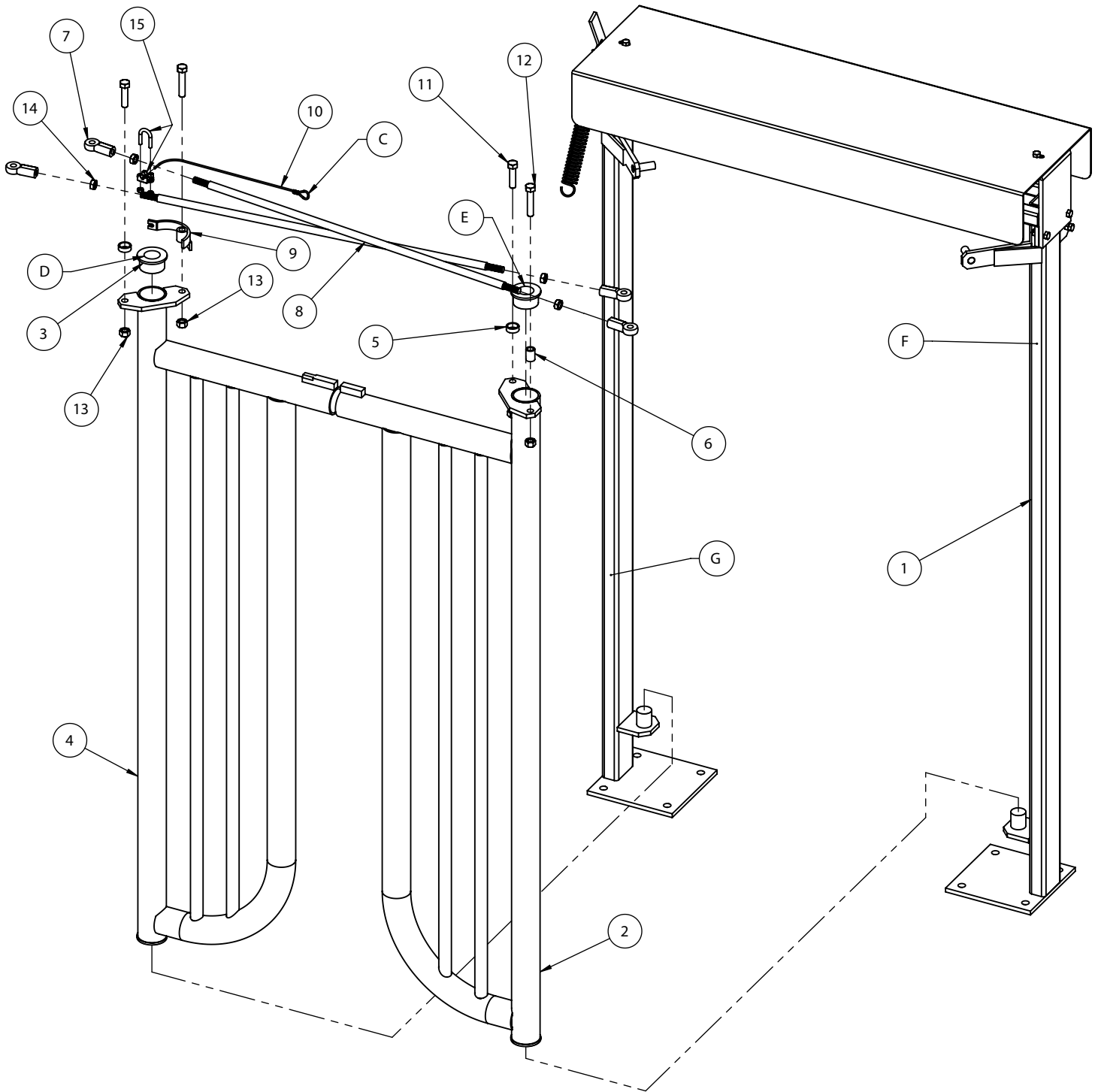
ITEM	QTY.	PART NUMBER	DESCRIPTION
1	1	LS96-10	Latch Lock
2	1	LS96-9	Front Latch
3	1	LS96-8	Back Latch
4	1	LS96-15	Latch Dog
5	1	LS96-24	Latch Sping
6	1	LS96-33	UMHW Wear Strip
7	4	LS96-17	9/16" x 3/4" x 1/2"L. Brass Bushing
8	2	LS96-90	Latch Bushing Spacer
9	1	LS96-2	Main Frame
10	1	H5C38*4	3/8" x 4" Hex Bolt
11	1	H5C38*34	3/8" x 3/4" Hex Bolt
12	1	H5C38*3	3/8" x 3" Hex Bolt
13	2	H5C12*6	1/2" x 6" Hex Bolt
14	1	SH516*112	5/16" x 1 1/2" Set Screw
15	2	MR1024*34	10-24 x 3/4" Machine Screw
16	2	NNC12	1/2" Nylon Lock Nut
17	2	NC1024	10-24 Nut
18	1	JNC516	5/16" Jam Nut
19	2	SNC38	3/8" Steel Lock Nut

Figure 1C LS96 Headgate Top Assembly: Control Rod



ITEM	QTY.	PART NUMBER	DESCRIPTION
1	1	LS96-2	Main Frame
2	1	LS96-18	Control Rod
3	2	LS96-17	Brass Bushing

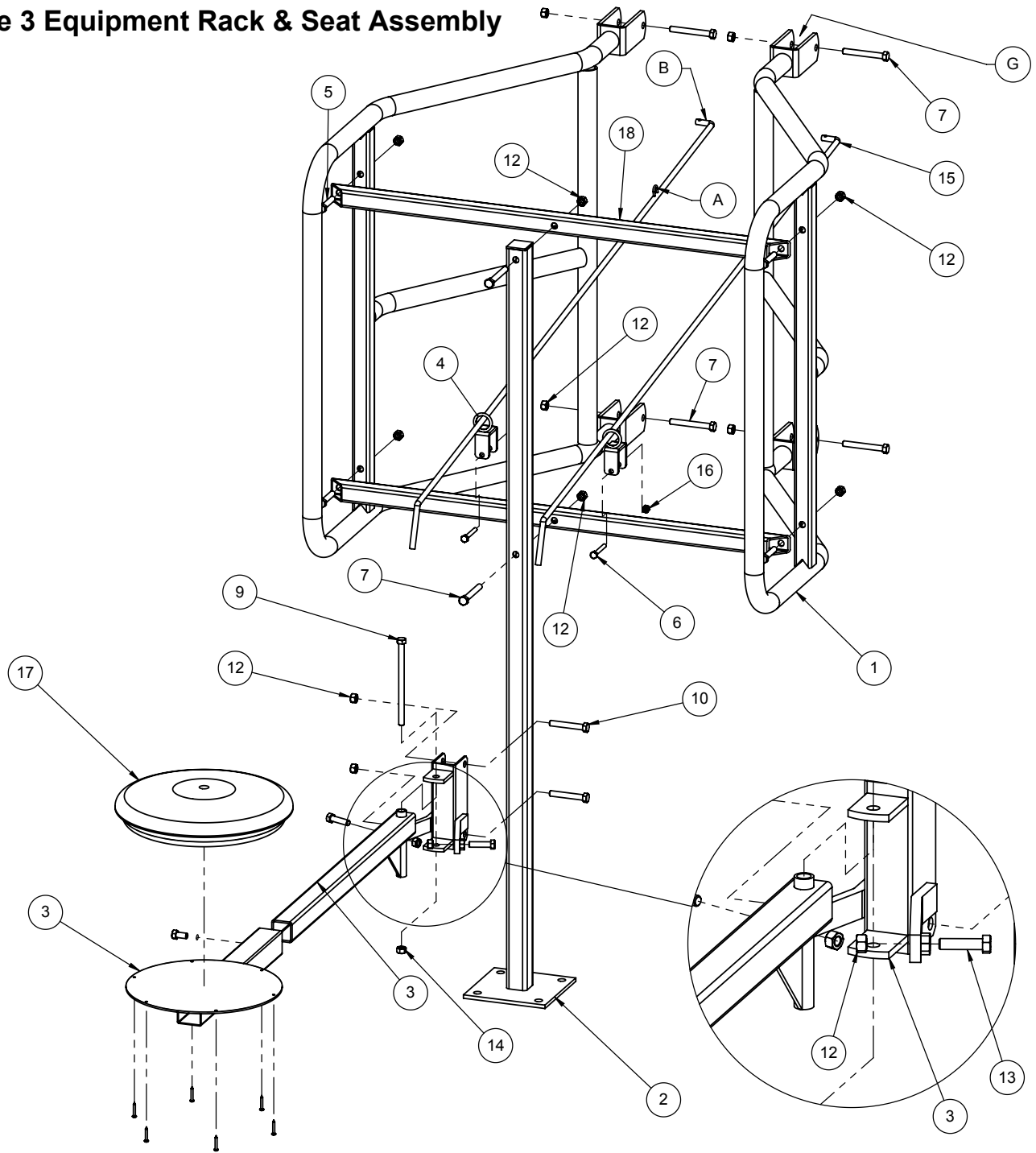
Figure 2 LS96 Headgate



ITEM	QTY.	PART NUMBER	DESCRIPTION
1	1	LS96-2	Main Frame
2	1	LS96-1R	Right Door
3	4	LS96-16	Door Bearing
4	1	LS96-1L	Left Door
5	2	LS96-31	Alum. Bushing
6	1	LS96-32	Spacer
7	4	F8SB	Rod End w/ Socket
8	2	LS96-5	Tie Rod

ITEM	QTY.	PART NUMBER	DESCRIPTION
9	1	LS96-4	Cable Cam
10	1	LS96-6	Cable w/ Loop
11	2	H5C12*2	1/2" x 2" Hex Bolt
12	2	H5C12*212	1/2" x 2 1/2" Hex Bolt
13	4	SNC12	1/2" Steel Lock Nut
14	4	JNC12	1/2" Jam Nut
15	1	LS96-27	1/8" Cable Clamp

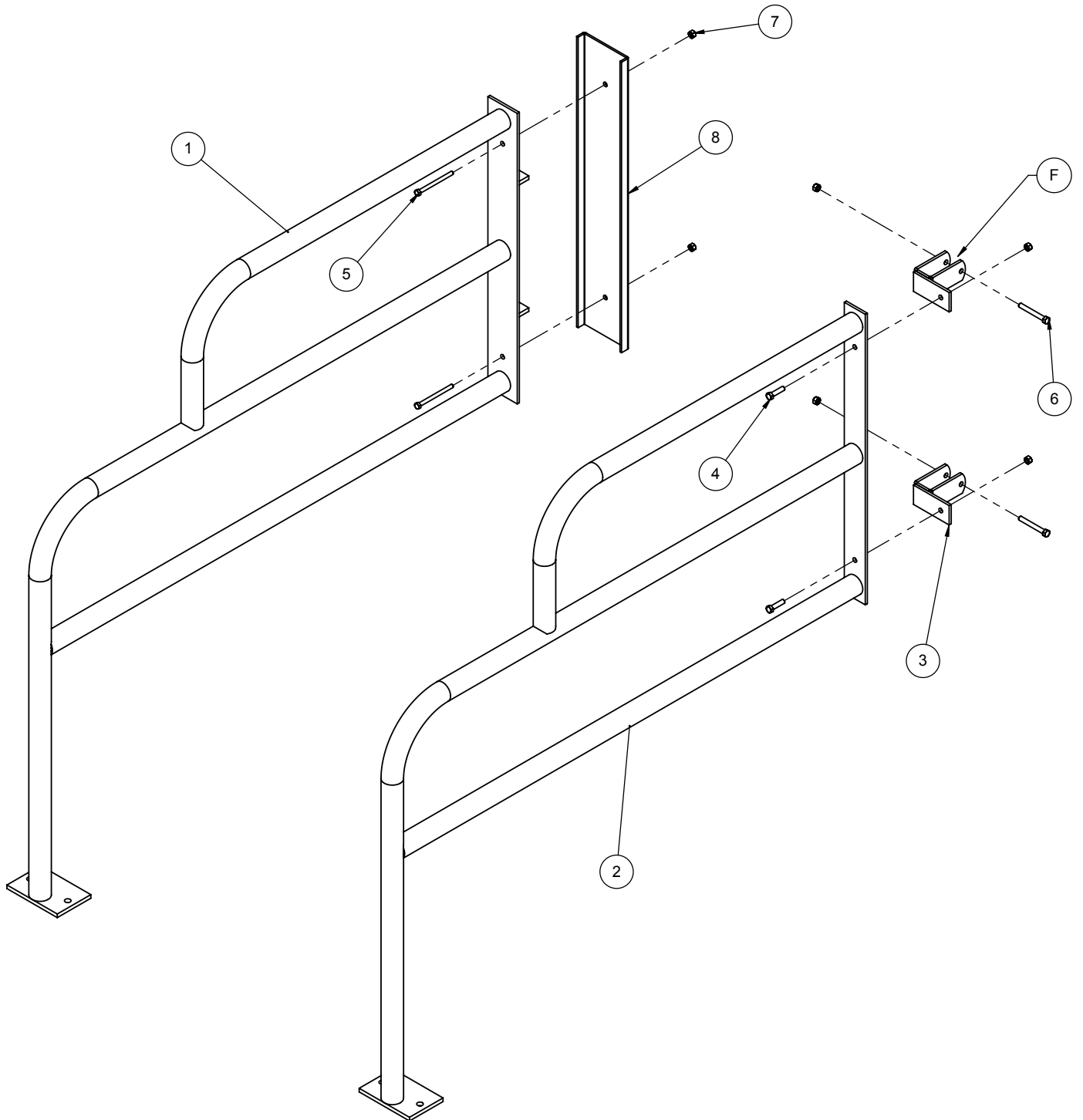
Figure 3 Equipment Rack & Seat Assembly



ITEM	QTY.	PART NUMBER	DESCRIPTION
1	2	LS96-14	Side Frame
2	1	LS96-13	Rack Leg
3	1	LS96-SE	Seat
4	2	LS96-12	Control Rod Guide
5	4	H5C38*2	3/8" x 2" Hex Bolt
6	2	H5C14*2	1/4" x 2" Hex Bolt
7	6	H5C38*3	3/8" x 3" Hex Bolt
8	6	PT6-12S	#6 x 1/2" Tap Screw
9	1	H5C38*6	3/8" x 6" Hex Bolt

ITEM	QTY.	PART NUMBER	DESCRIPTION
10	2	H5C38*212	3/8" x 2 1/2" Hex Bolt
11	1	H5C38*34	3/8" x 3/4" Hex Bolt
12	14	NC38	3/8" Hex Nut
13	2	H5C38*112	3/8" x 1 1/2" Hex Bolt
14	1	SNC38	3/8" Steel Lock Nut
15	2	LS96-20	Pull Rod
16	2	NC14	1/4" Hex Nut
17	1	LS96-50	Milking Stall Seat
18	2	LS96-11	Cross Bar
20	1	LS96-SE3	

Figure 4 Side & End Rails

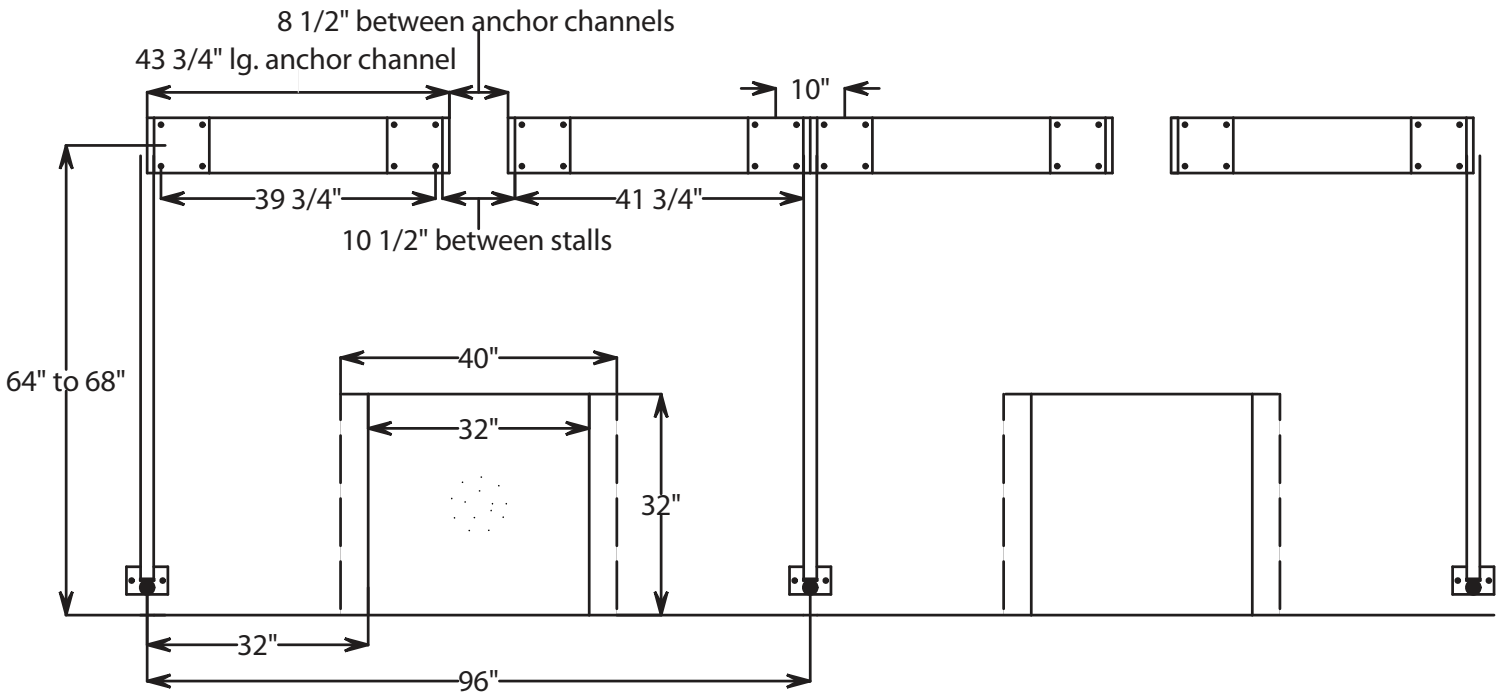


ITEM NO.	QTY.	PART NUMBER	DESCRIPTION
1	1	LS96DC	Milking Stall Center Divider
2	1	LS96DE	Milking Stall End Divider
3	2	LS96-14B	U-Clip for End Divider
4	2	H5C38*112	3/8" x 1 1/2" hex bolt
5	2	H5C38*4	3/8" x 4" hex bolt
6	2	H5C38*3	3/8" x 3" hex bolt
7	6	NC38	3/8" nut
8	1	LS96-30	Front Plate for Center Divider

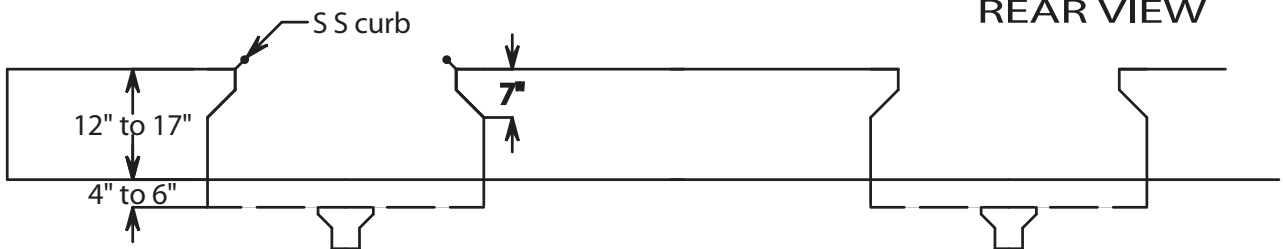
LS96 Walk-Through Milking Parlor

For Flat Floor Installations

TOP VIEW



REAR VIEW



END VIEW

