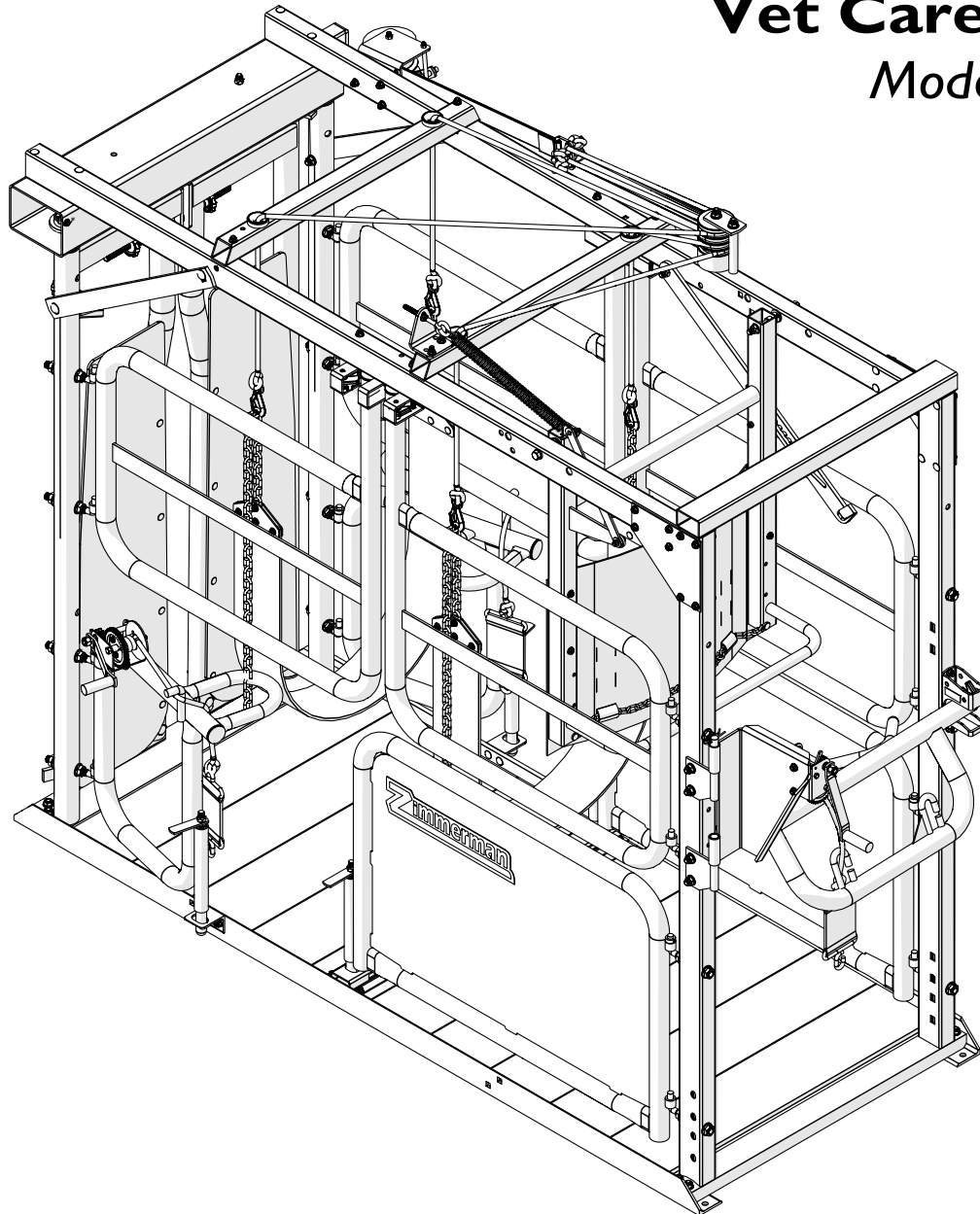




Assembly Instruction Manual

Vet Care Chute Model HVCI 2



PBZ LLC | 50 Wood Corner Rd | Lititz PA 17543
www.CropCareEquipment.com | (717) 738-7365

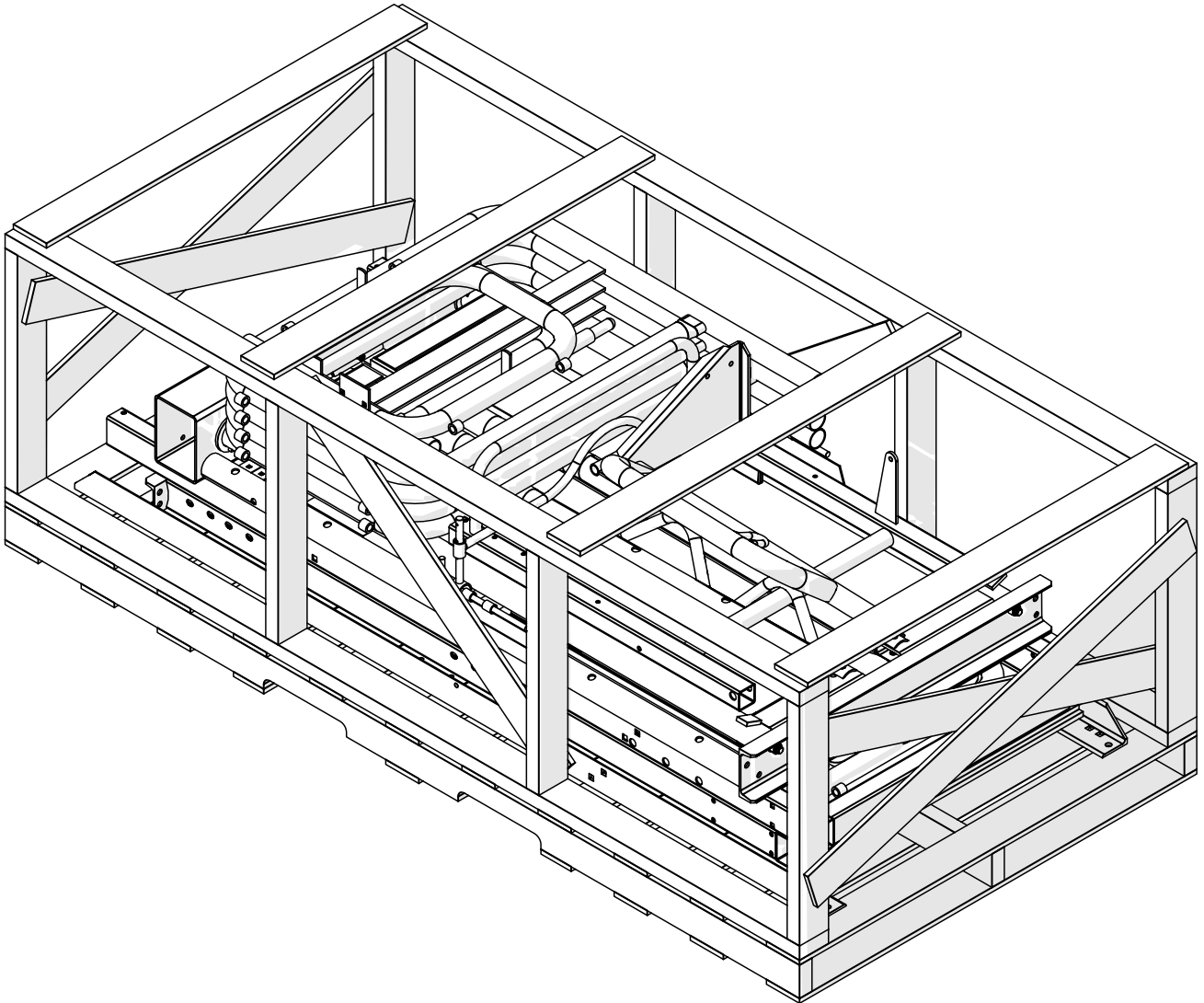
A Paul B Zimmerman Inc. Company

Form OM0017
Rev. Date 1/1/11

HVC12 Assembly Instructions

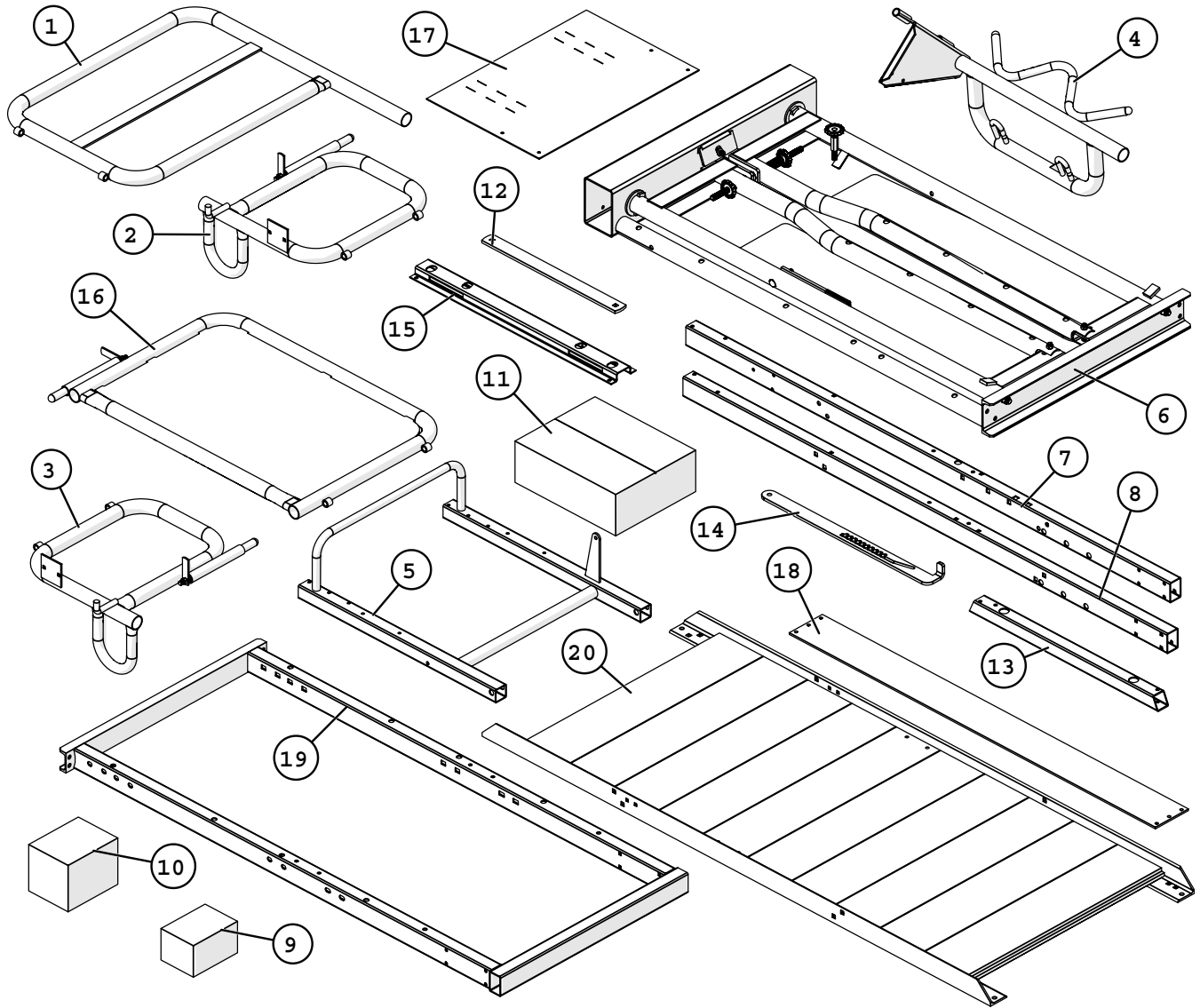
The Vet Care Chute, model HVC12, comes partially assembled on a pallet and requires some assembly. Follow the step-by-step instructions to ensure proper assembly. Before assembling, ensure that the pallet contains all of the necessary components and parts .

Pallet (as shipped)



HVC12 Assembly Instructions

Pallet Contents

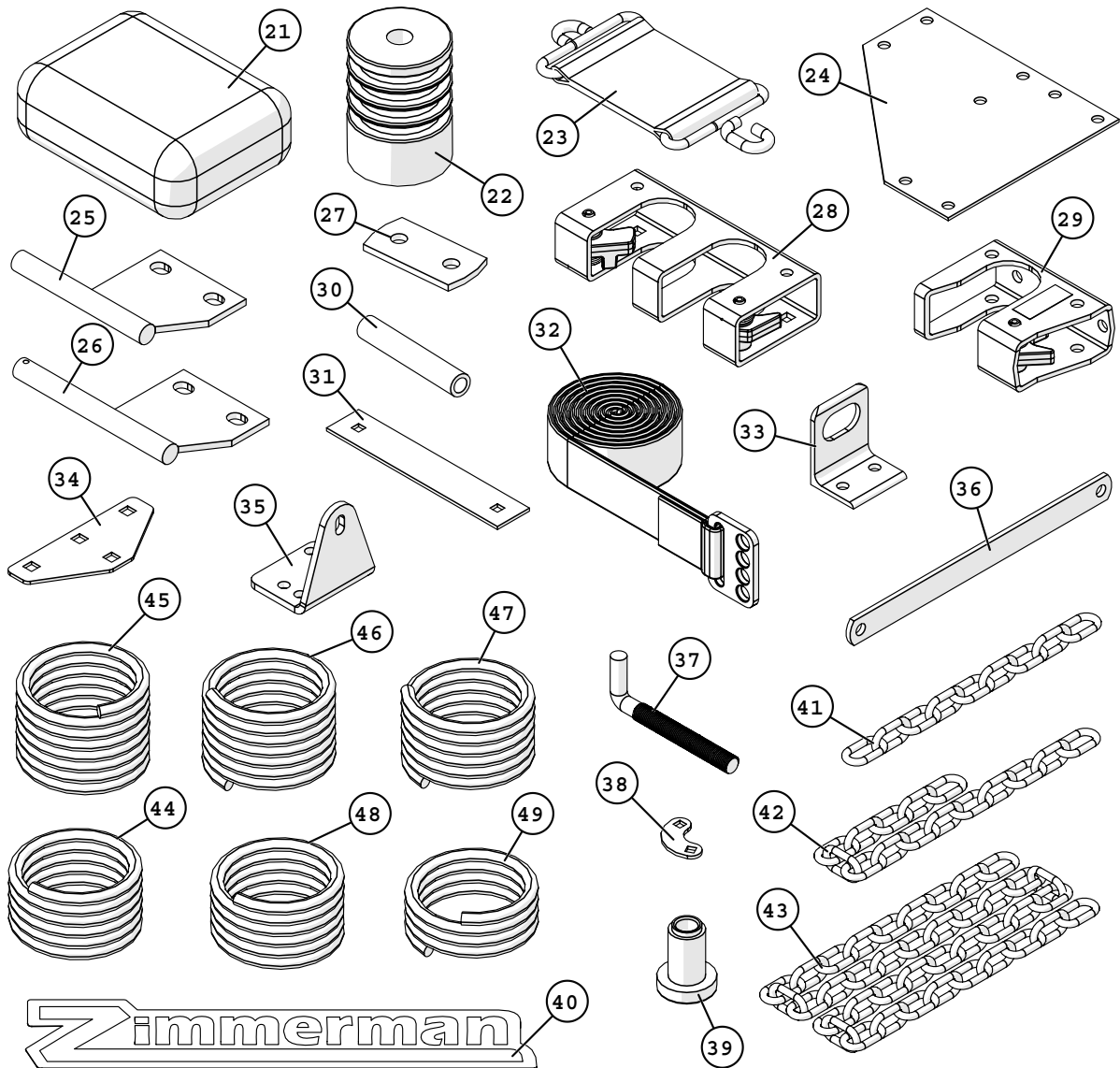


Ref	Qty	Part #	Description
1	4	HVC008	Top gate
2	1	HVC018	Front leg lifter, left
3	1	HVC019	Front leg lifter, right
4	1	HCA2008RL	Rear leg lifter weldment
5	1	HVC021	Rear stop
6	1	AHG2011	Automatic headgate assembly
7	1	HVC001	Top tube rail
8	1	HVC002	Top tube rail
9	3	DL900	900 lb. hand winch
10	1	DLxWG1500	2000 lb. hand winch
11	1	--	Hardware box

Ref	Qty	Part #	Description
12	2	HVC028	Front frame strap
13	2	HVC012	Four point lift bar
14	1	HVC011	Rear stop latch
15	1	HVC010	Bottom gate latch
16	2	HVC009	Bottom gate
17	1	HVC022	Rear stop, rubber sheet
18	2	HVC038	Belly band strap
19	1	HVC003	Rear frame
20	1	--	Floor assembly

HVC12 Assembly Instructions

Hardware Box Contents



Ref	Qty	Part #	Description
21	2	--	Hardware bag
22	1	HVC015	Rope spool
23	3	HCA2001-LS	Leg lifter strap
24	2	HVC007	Rear frame gusset
25	1	HSG8148B	Bolt on hinge, 6"
26	1	HSG8148T	Bolt on hinge, 7"
27	1	HVC016	Rope spool clamp
28	2	GL201	Double gate latch
29	1	GL100	Single gate latch
30	2	HVC014	Rope spool support
31	2	HVC023	Rear stop clamp
32	1	HVC039	Nylon lift strap
33	2	HVC020	Leg lifter latch
34	8	HVC035	Belly band plate
35	1	HVC034	Spring bracket

Ref	Qty	Part #	Description
36	1	HVC033	Spring connector
37	16	HVC037	Hinge bolt
38	3	HVC029	Leg lifter rope clamp
39	4	HVC013	Rope bushing
40	2	PBZLOGO-17x4	Zimmerman decal
41	2	0140423	1/4" chain, 1' long
42	1	0140323	3/16" chain, 2'-6" long
43	2	0140423	1/4" chain, 4' long
44	2	RSKR716	7/16" rope, 6' long
45	1	RSKR716	7/16" rope, 8' long
46	1	RSKR716	7/16" rope, 7'-3" long
47	1	RSKR716	7/16" rope, 6'-5" long
48	1	RSKR716	7/16" rope, 5'-11" long
49	1	RSKR716	7/16" rope, 4'-5" long

** Hardware Bag Contents Listed on next page

HVC12 Assembly Instructions

Hardware Bag Contents

Bag # 1

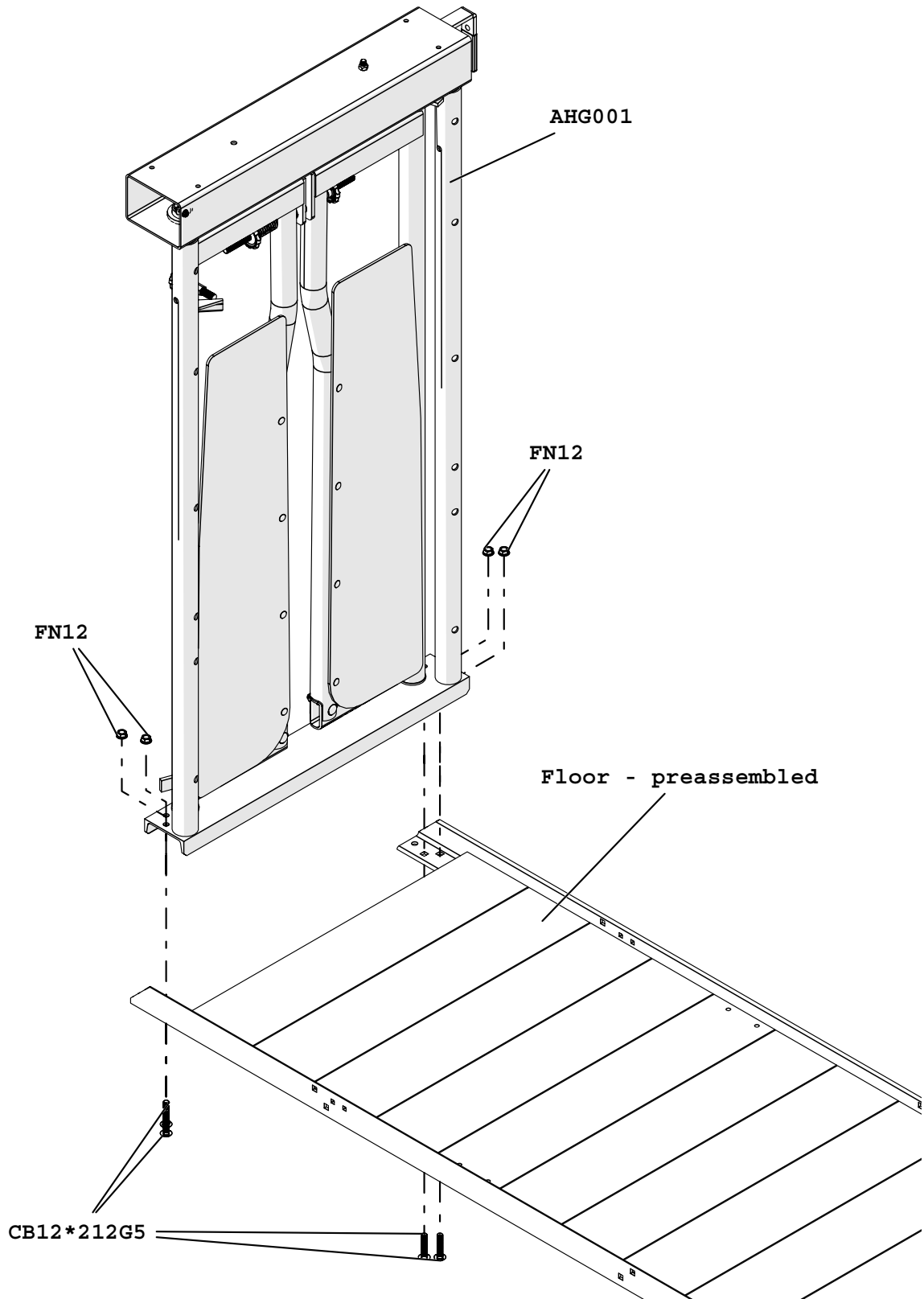
Qty.	Part Number	Description
3	CB12*312G5	Carriage bolt, 1/2-13 x 3 1/2" grade 5
6	CB12*3G5	Carriage bolt, 1/2-13 x 3" grade 5
4	CB12*212G5	Carriage bolt, 1/2-13 x 2 1/2" grade 5
4	CB12*214G5	Carriage bolt, 1/2-13 x 2 1/4" grade 5
4	CB38*312G5	Carriage bolt, 3/8-16 x 3 1/2" grade 5
1	SSB38*212	Shoulder bolt, 3/8" x 2 1/2"
4	CB38*234G5	Carriage bolt, 3/8-16 x 2 3/4" grade 5
16	CB38*212G5	Carriage bolt, 3/8-16 x 2 1/2" grade 5
4	CB38*214G5	Carriage bolt, 3/8-16 x 2 1/4" grade 5
4	CB38*1G5	Carriage bolt, 3/8-16 x 1" grade 5
1	H5C38*1	Hex head bolt, 3/8-16 x 1" grade 5
6	H5C38*34	Hex head bolt, 3/8-16 x 3/4" grade 5
6	CB516*212G5	Carriage bolt, 5/16-18 x 2 1/2", grade 5
16	CB516*1G5	Carriage bolt, 5/16-18 x 1", grade 5
6	CB14*34G5	Carriage bolt, 1/4-20 x 3/4" grade 5
32	FN58	Flange nut, 5/8-11
18	FN12	Flange nut, 1/2-13
3	SNC12	Steel lock nut, 1/2-13
6	FW12	Flat washer, 1/2"
50	FN38	Flange nut, 3/8-16
1	SNC38	Steel lock nut, 3/8-16
3	FW38	Flat washer, 3/8"
22	FN516	Flange nut, 5/16-18
6	FN14	Flange nut, 1/4-20
1	SNC516	Steel lock nut, 5/16-18
1	0500P	1/2" shaft collar
4	0625P	5/8" shaft collar
8	FB812-5	Bushing, 1" ID x 1 1/4" OD, 1" long flanged
4	2311S34	Safety Chain Hook Stainless

Bag # 2

Qty.	Part Number	Description
2	CB12*9G5	Carriage bolt, 1/2-13 x 9", grade 5
2	CB38*334	Carriage bolt, 3/8-16 x 3 3/4" grade 2
1	H5C12*6	Hex head bolt, 1/2-13 x 6" grade 5
1	H5C12*512	Hex bolt, 1/2-13 x 5 1/2" grade 5
1	CB38*6G5	Carriage bolt, 3/8-16 x 6" grade 5
7	CB38*512G5	Carriage bolt, 3/8-16 x 5 1/2" grade 5
7	GTP	Gate tube plug
1	B116	1.5" O.D. x 9.5" extension spring
1	N221283	3/8" x 6" eye bolt, zinc

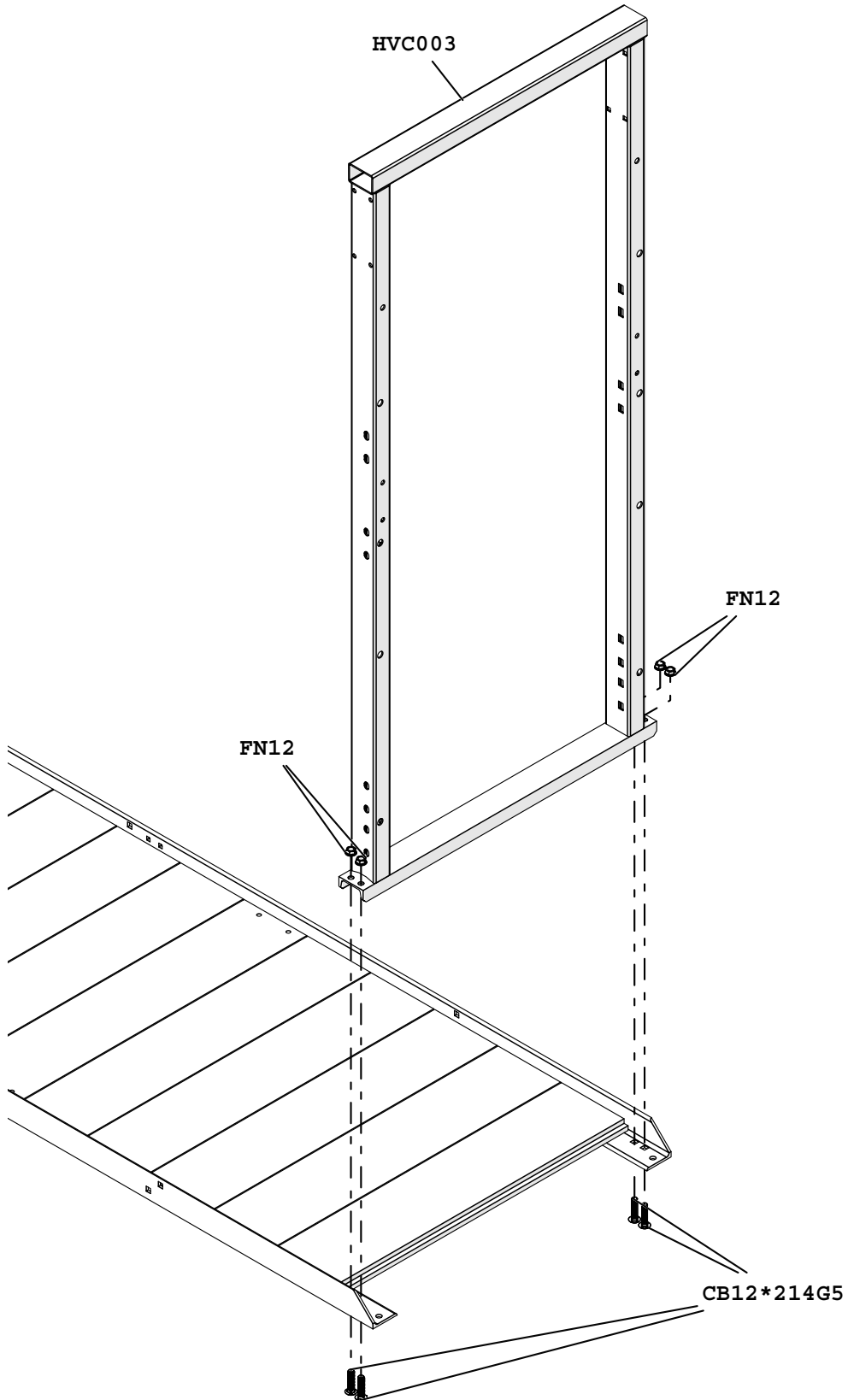
HVC12 Assembly Instructions

Step 1



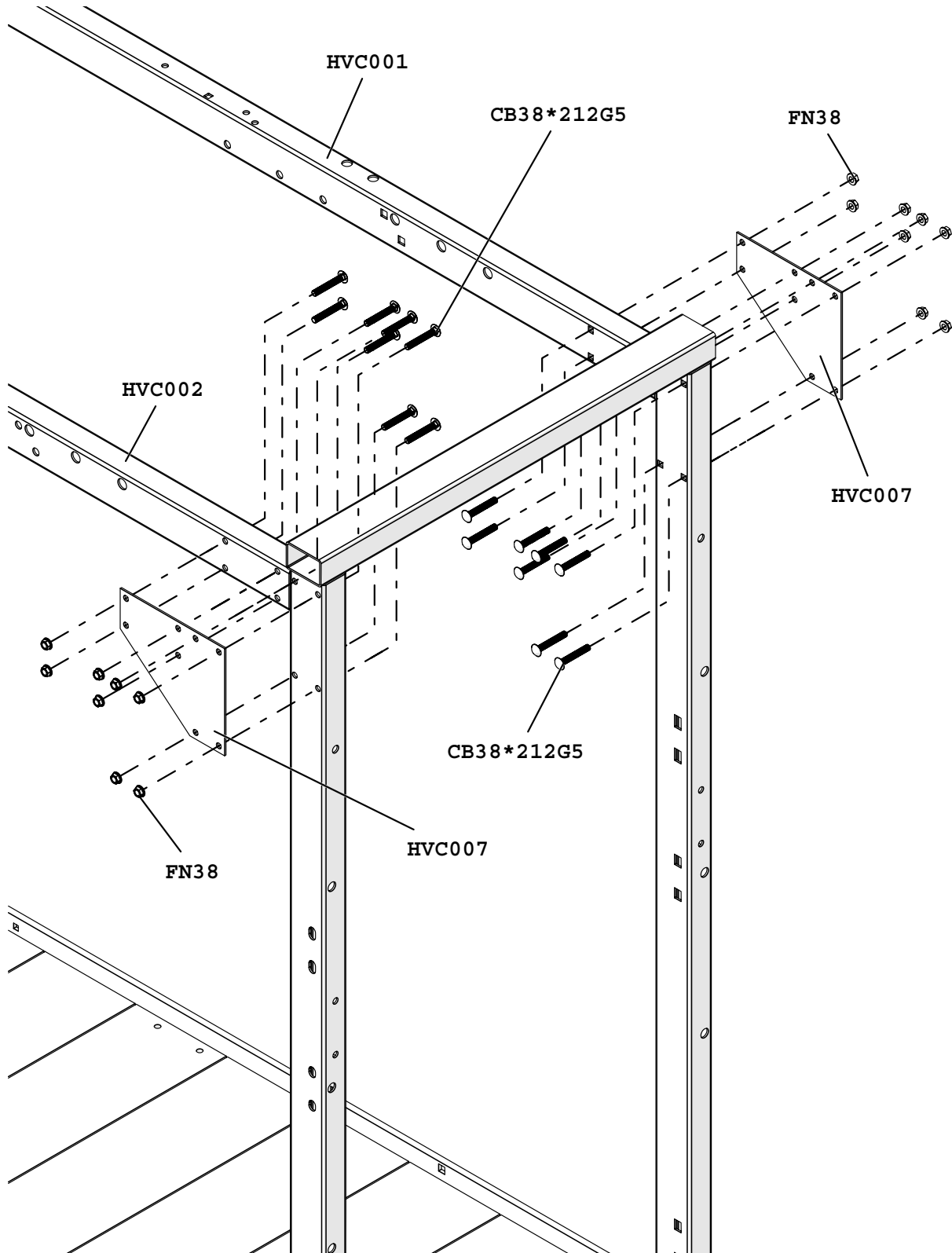
HVC12 Assembly Instructions

Step 2



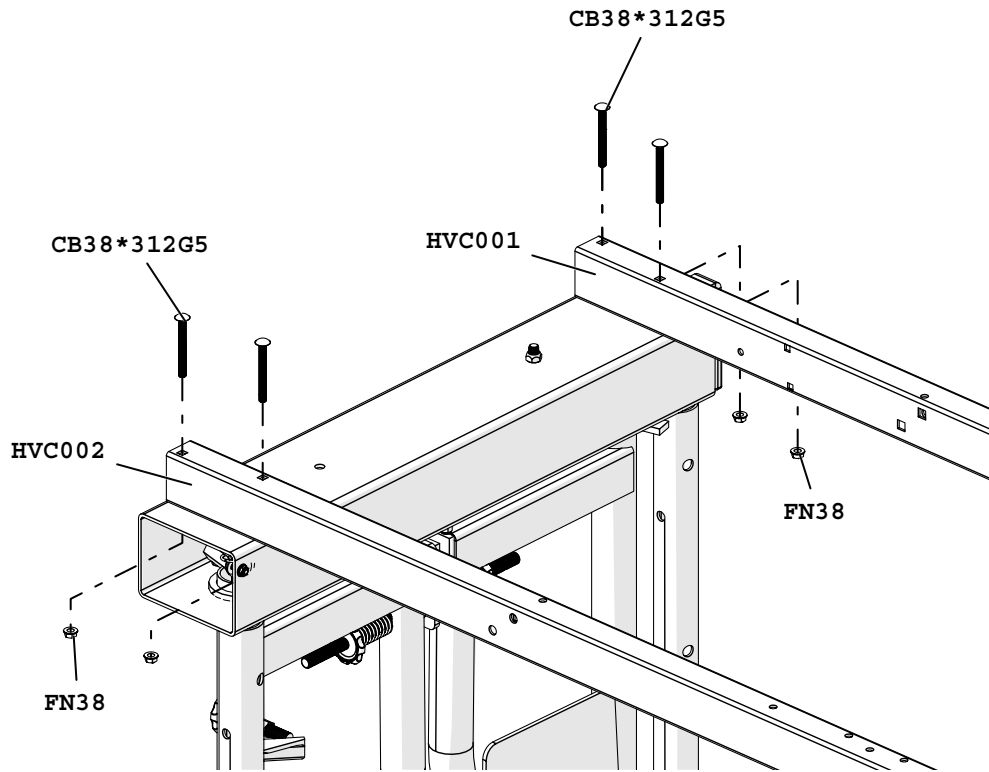
HVC12 Assembly Instructions

Step 3

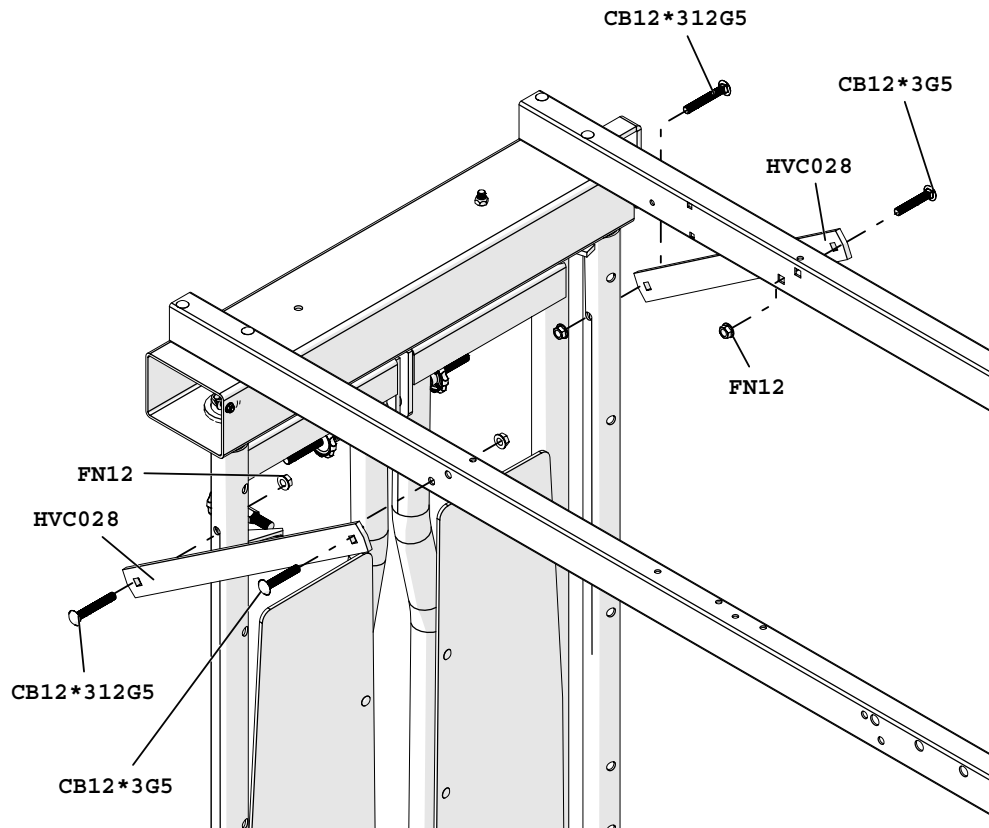


HVC12 Assembly Instructions

Step 4

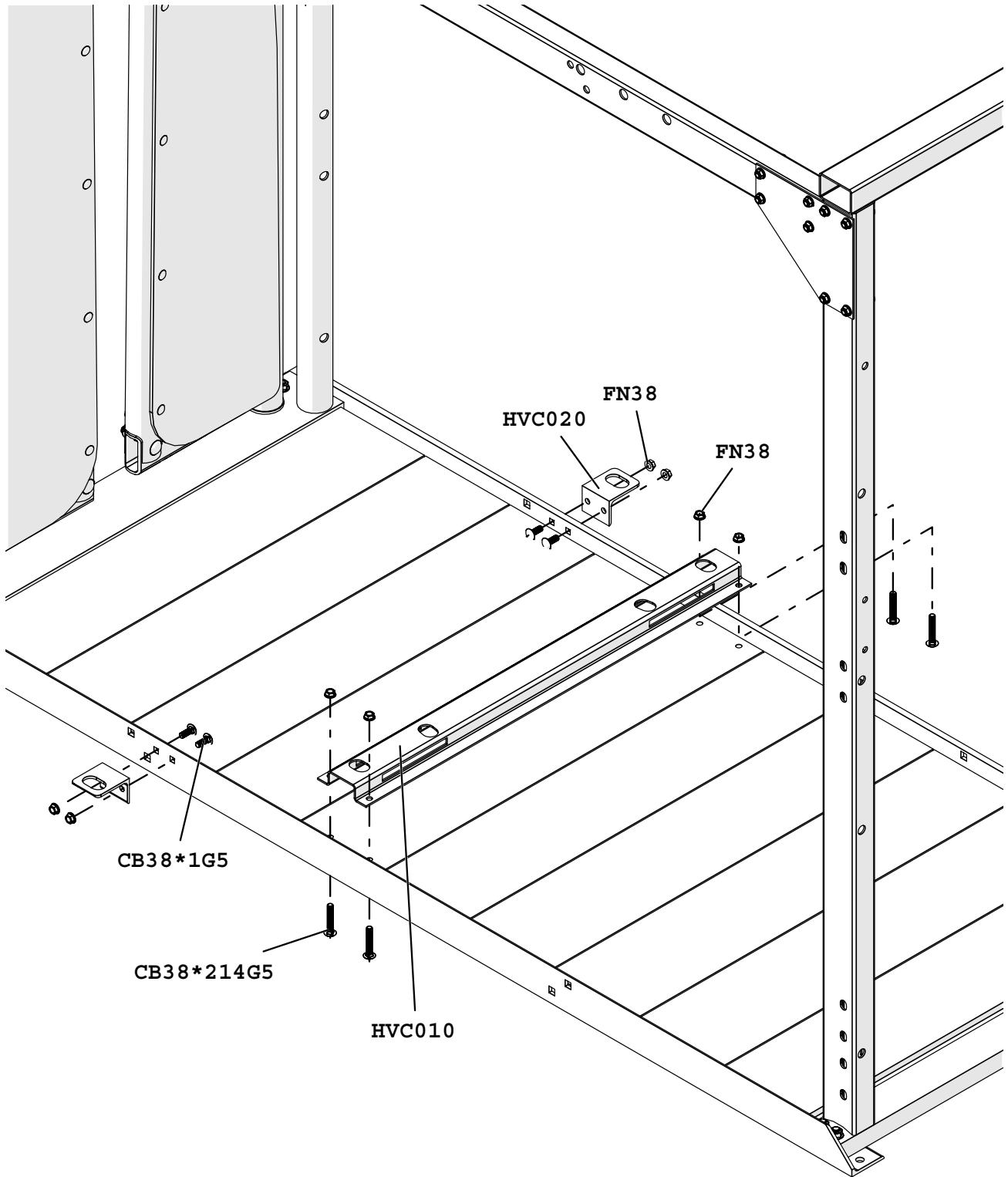


Step 5



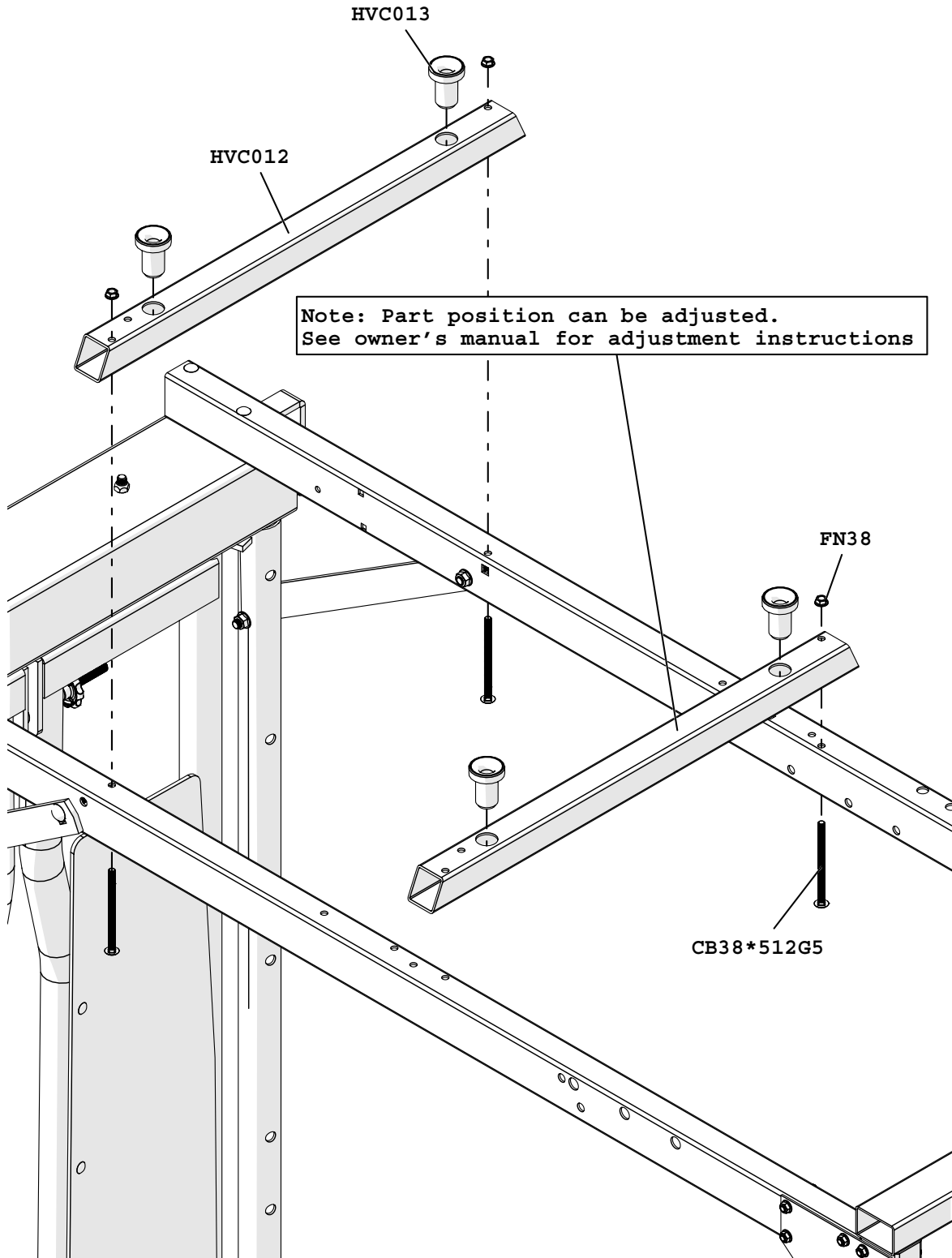
HVC12 Assembly Instructions

Step 6



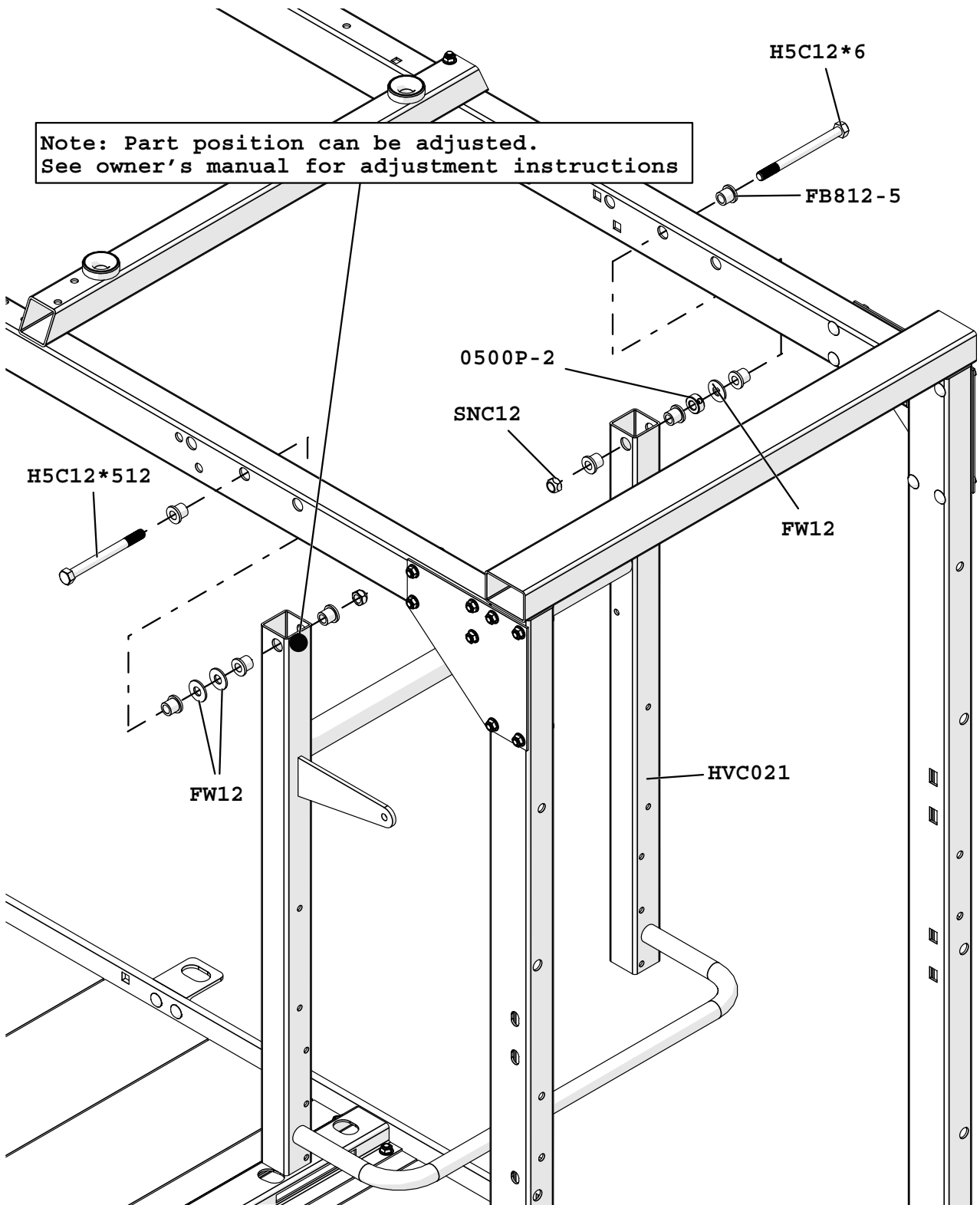
HVC12 Assembly Instructions

Step 7



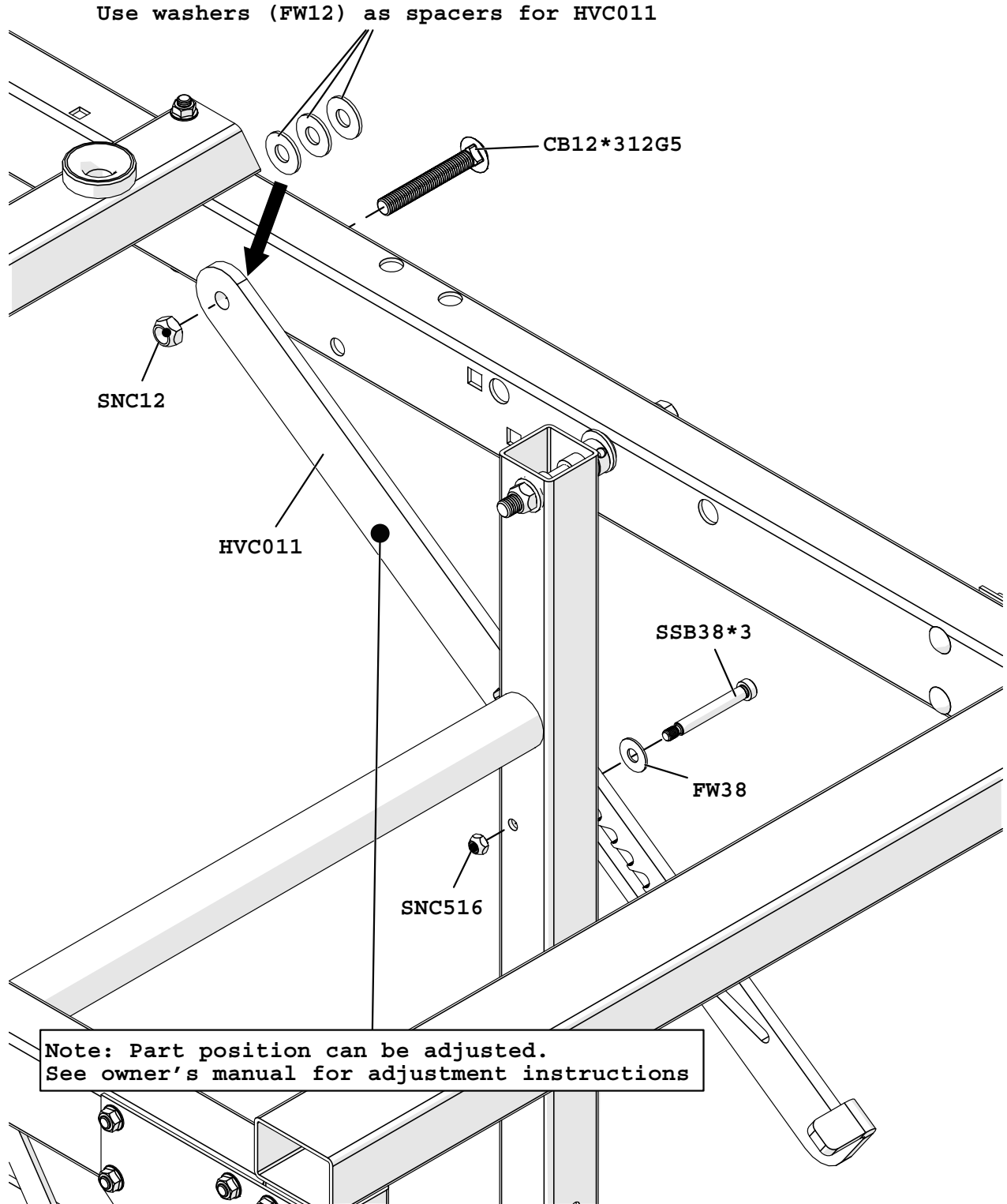
HVC12 Assembly Instructions

Step 8



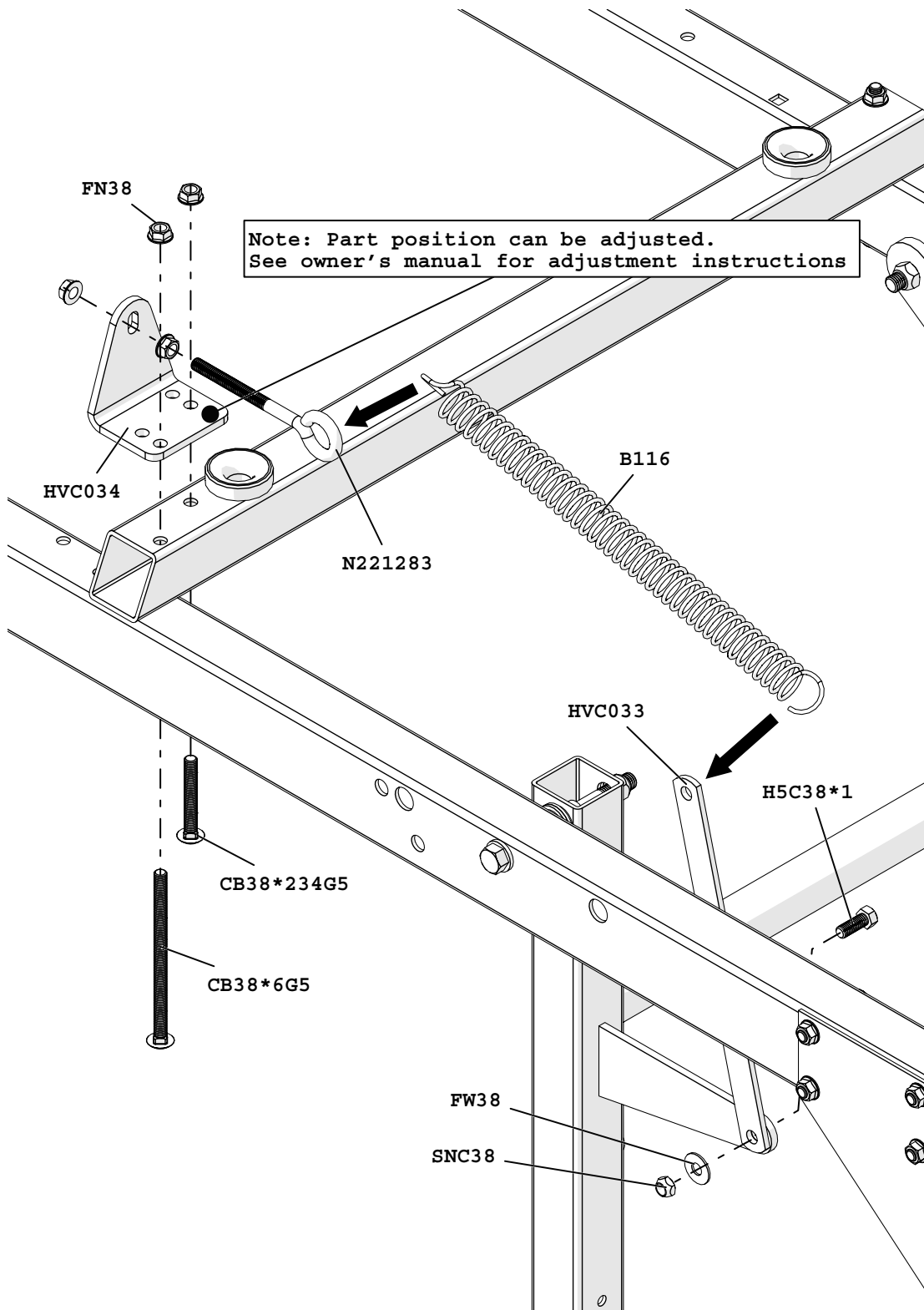
HVC12 Assembly Instructions

Step 9



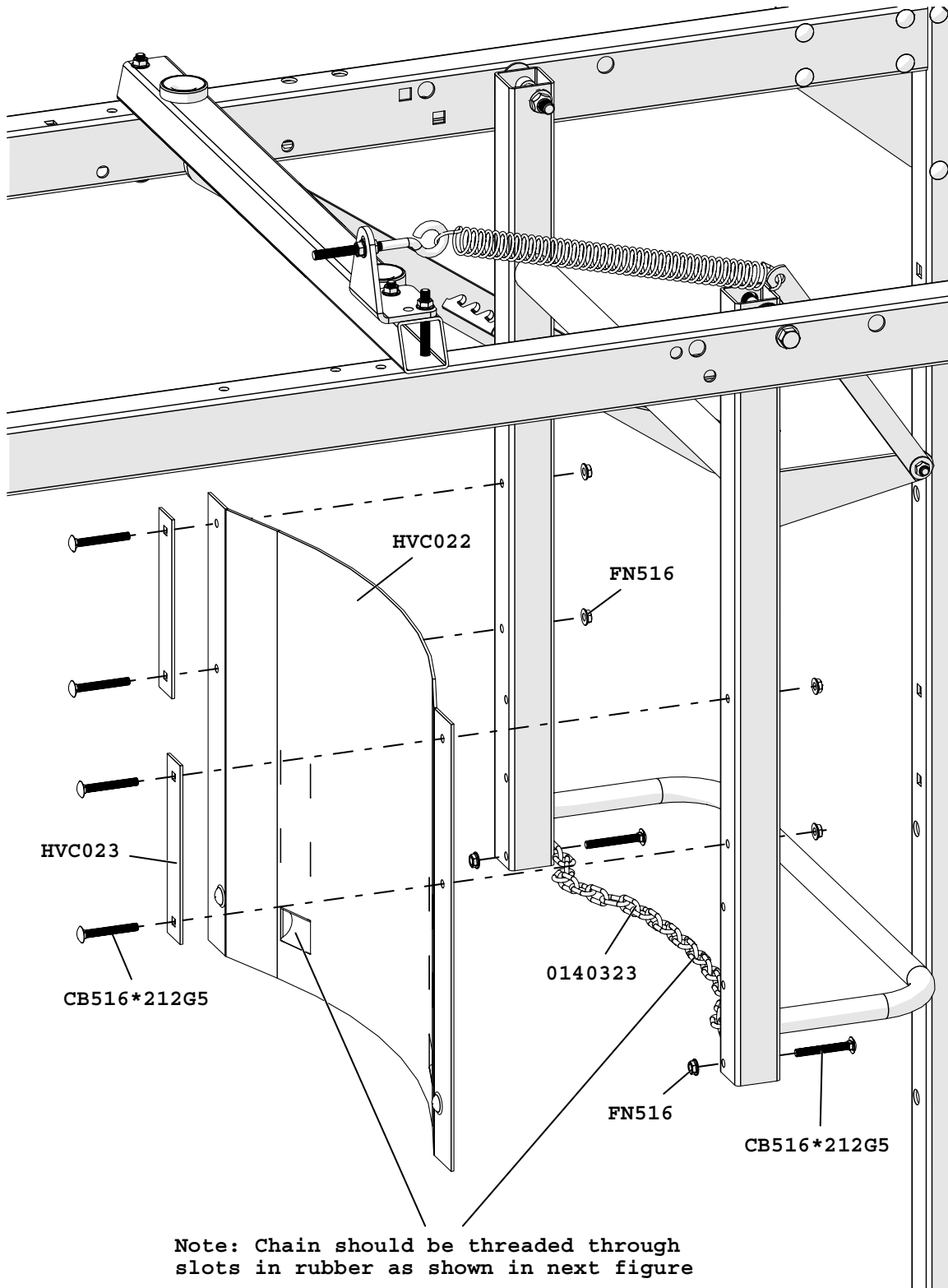
HVC12 Assembly Instructions

Step 10



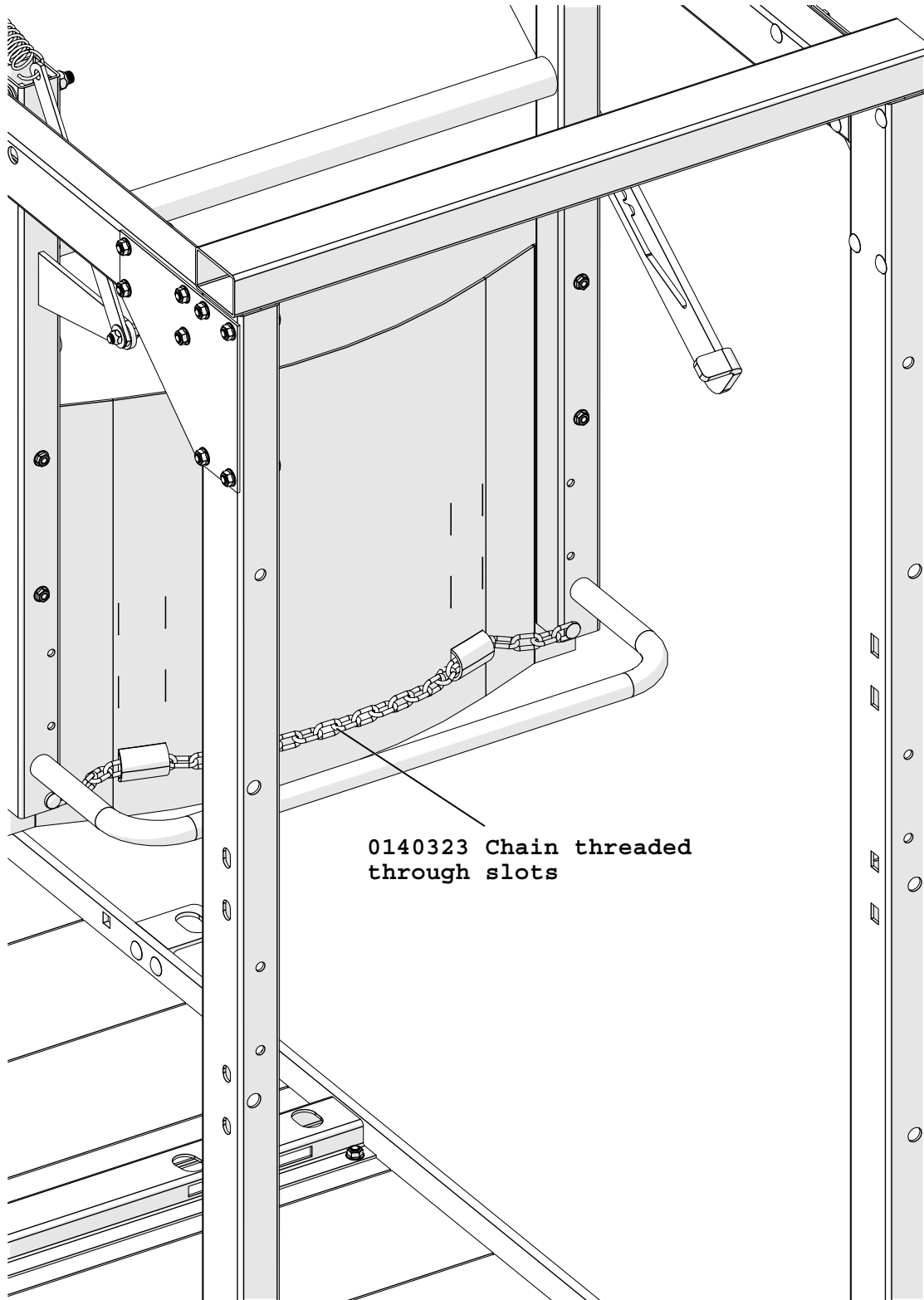
HVC12 Assembly Instructions

Step 11



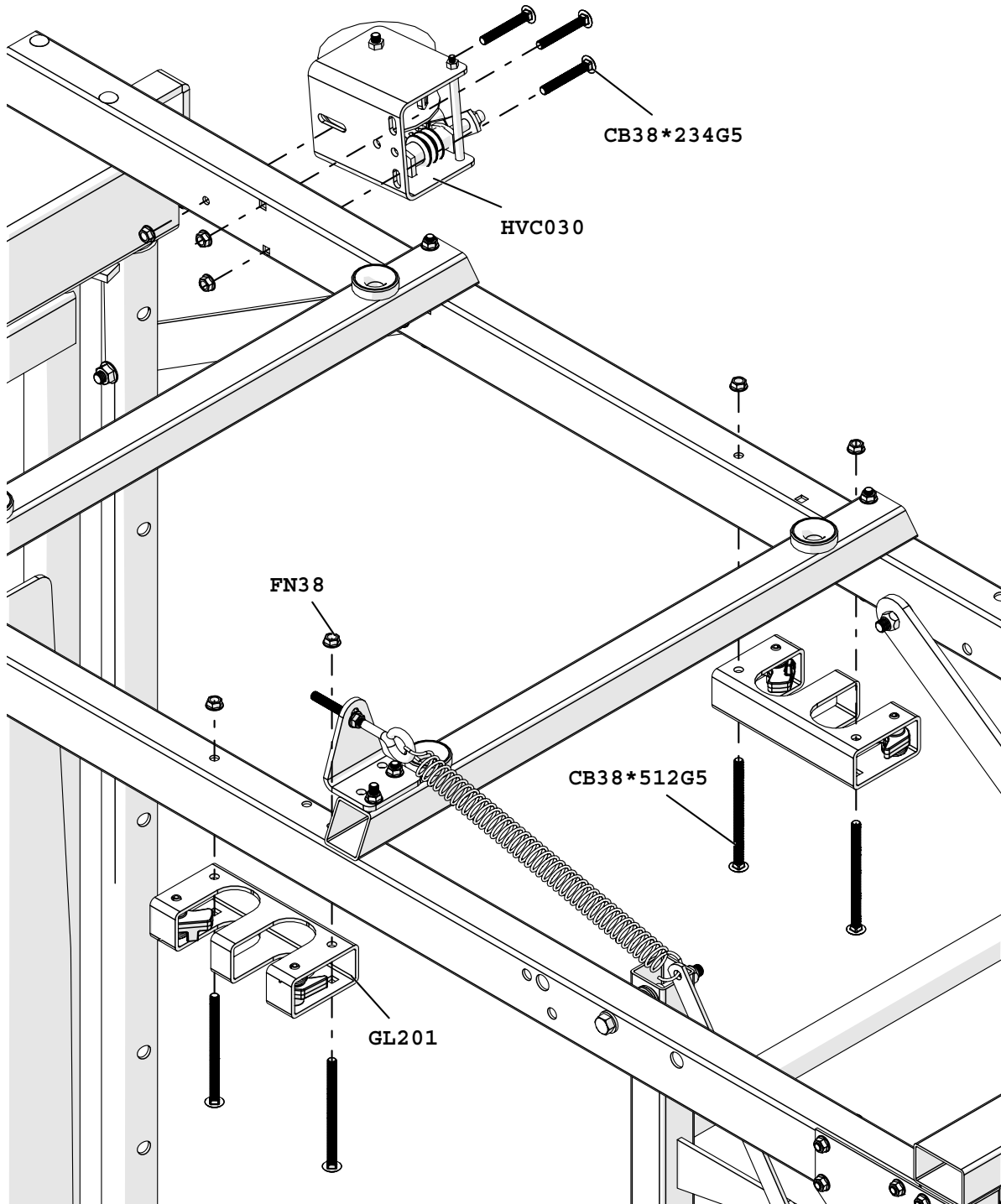
HVC12 Assembly Instructions

Step 12



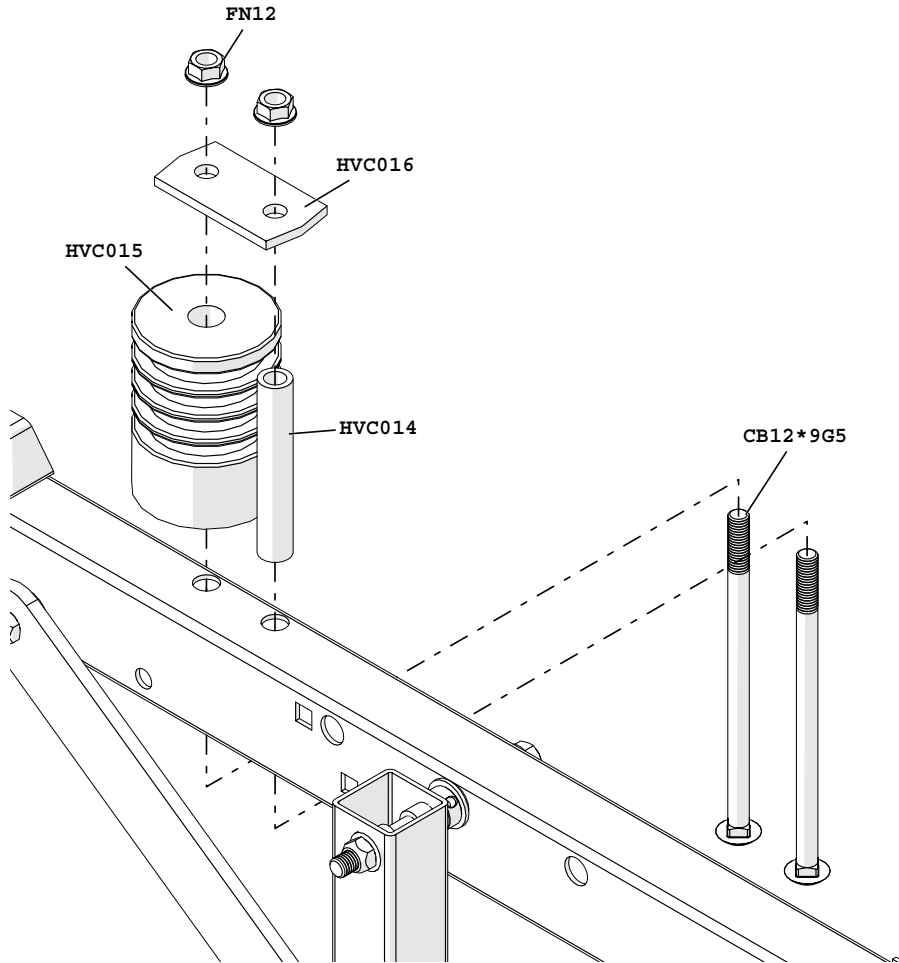
HVC12 Assembly Instructions

Step 13

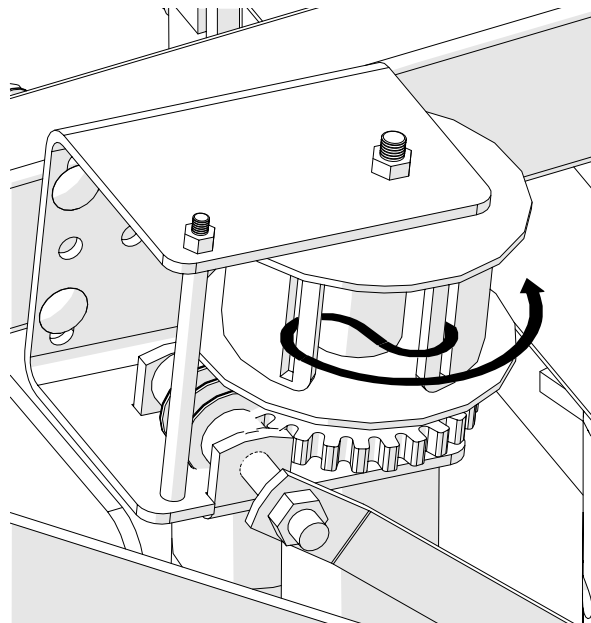


HVC12 Assembly Instructions

Step 14



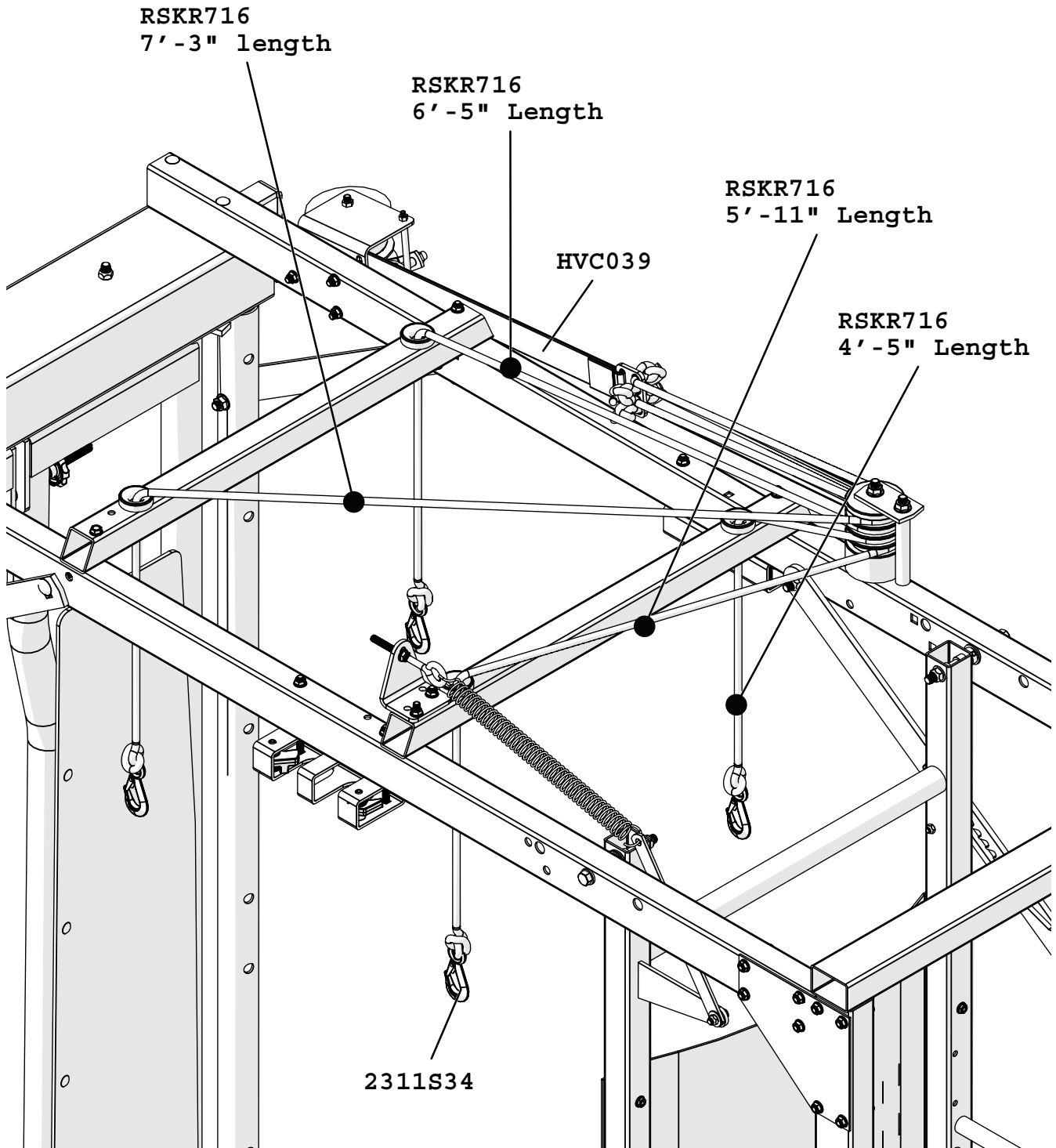
Winch Strap Winding Instructions



HVC12 Assembly Instructions

Step 15

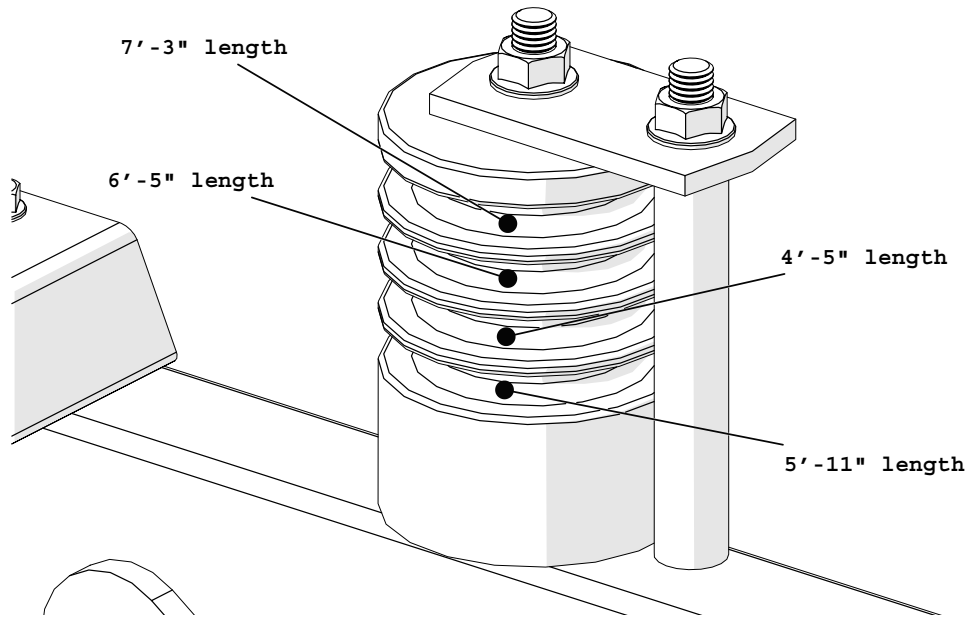
Note: Knot rope on hook and on strap as shown



HVC12 Assembly Instructions

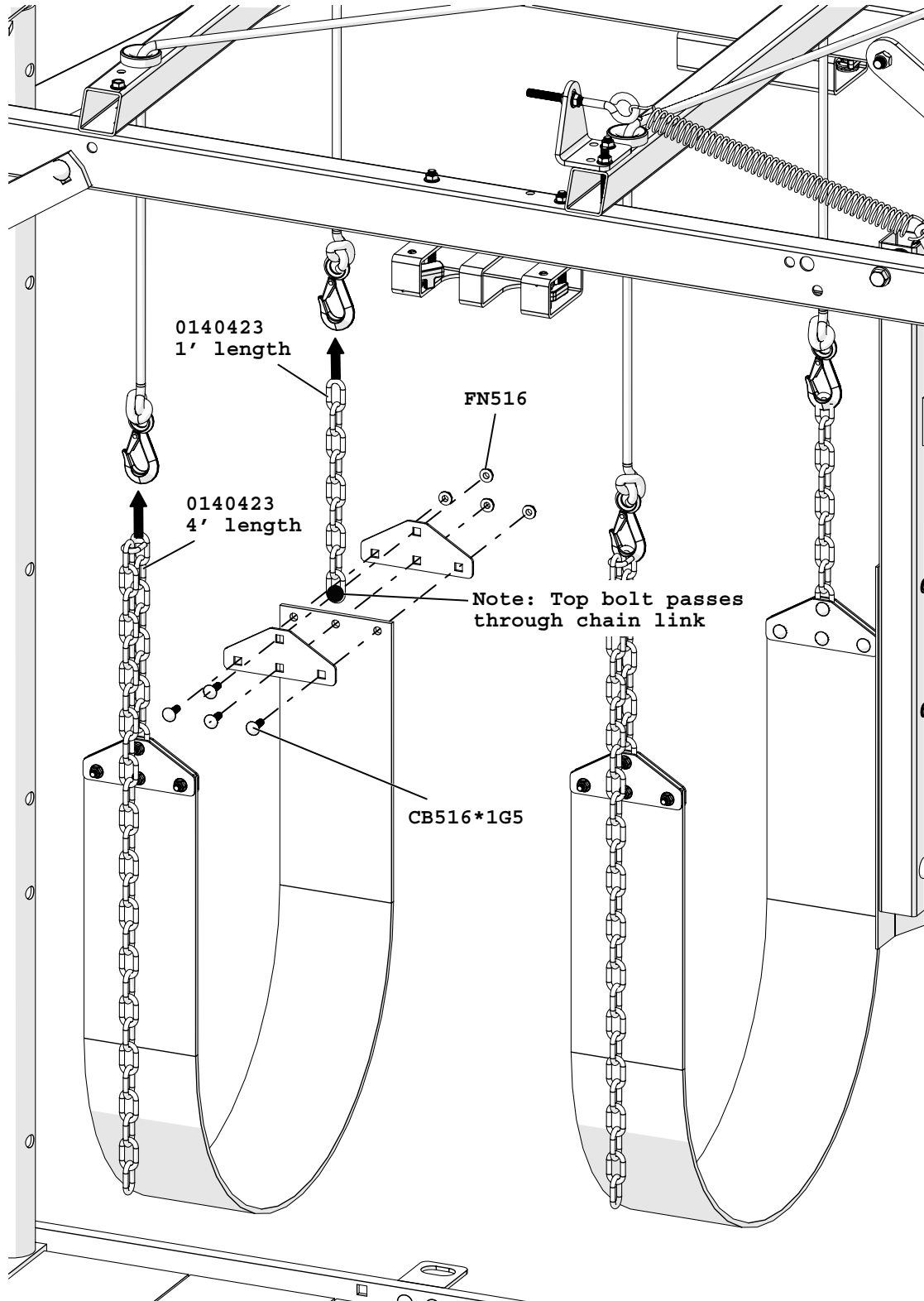
Rope Spool Instructions

How to arrange ropes on rope spool



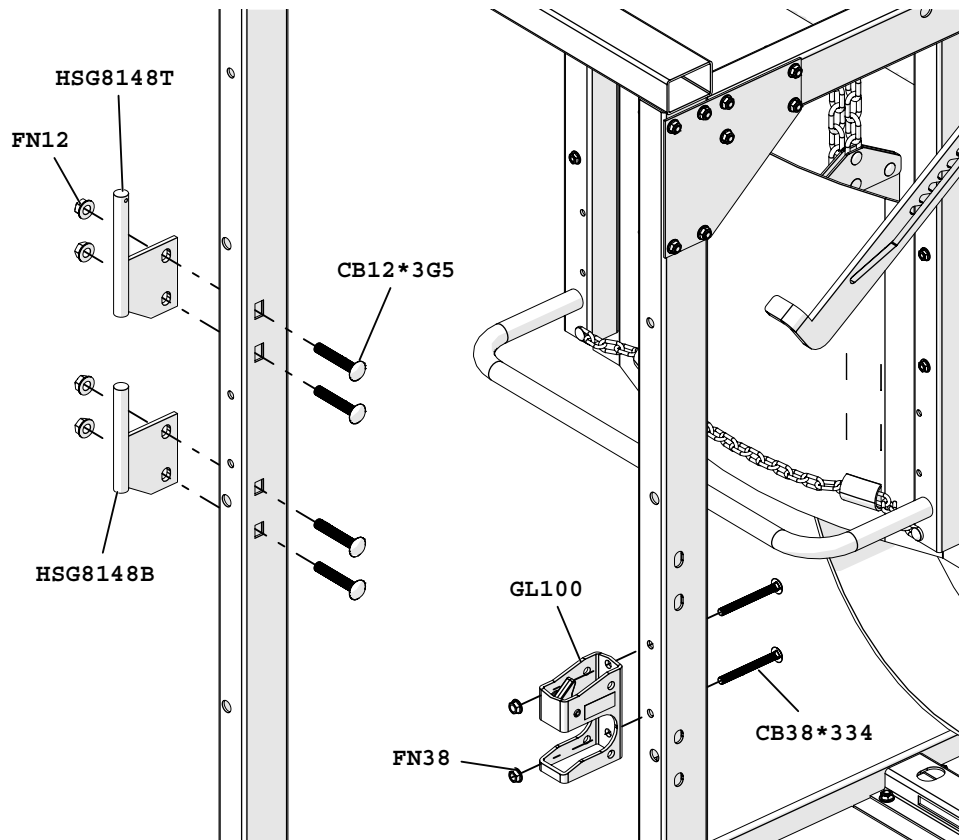
HVC12 Assembly Instructions

Step 16

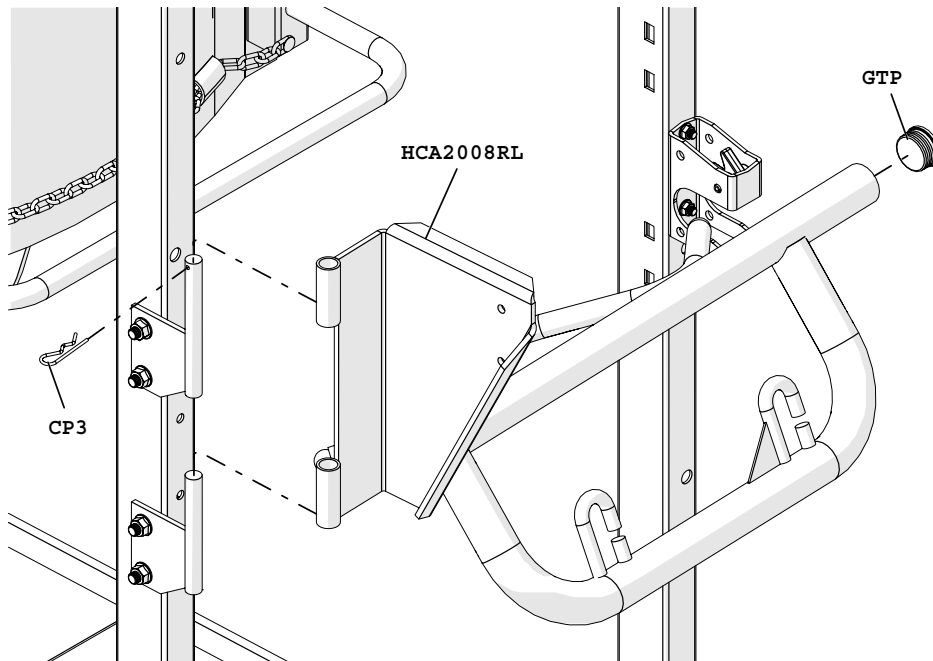


HVC12 Assembly Instructions

Step 17

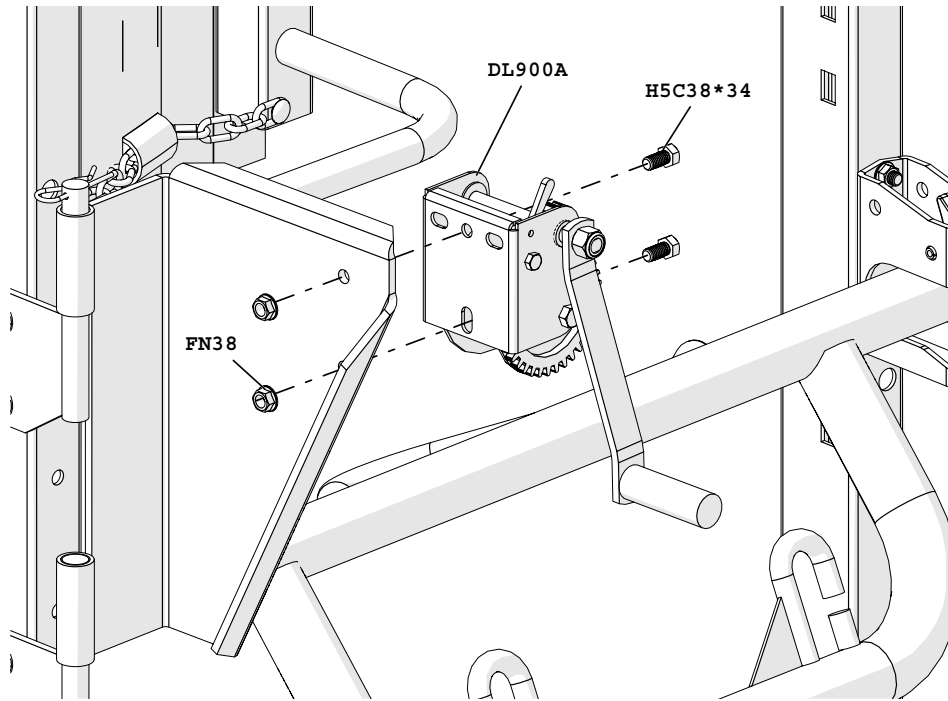


Step 18



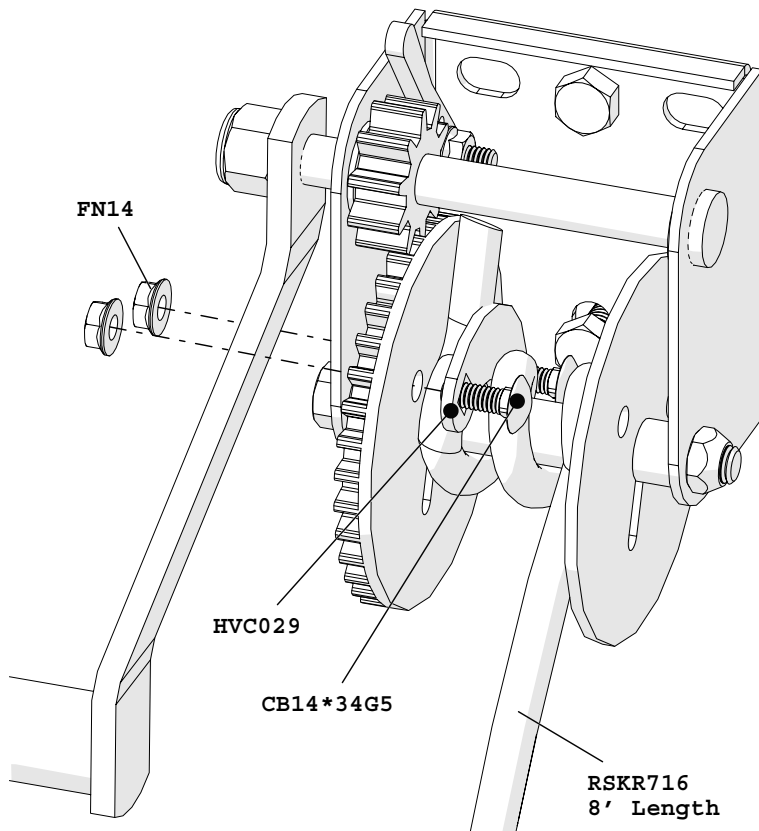
HVC12 Assembly Instructions

Step 19



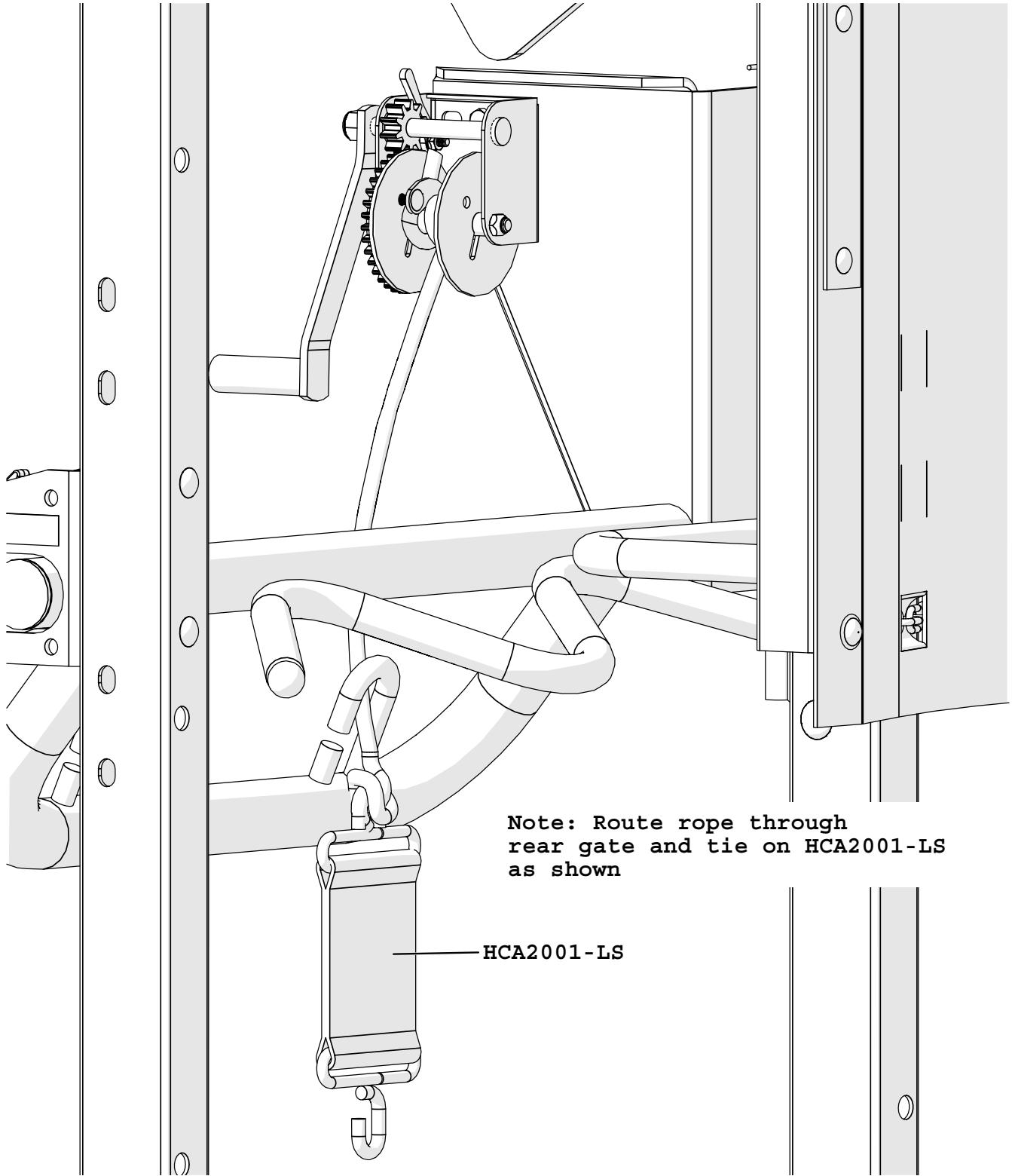
Step 20

Note: Pinch rope with HVC029 then wind rope on winch as shown



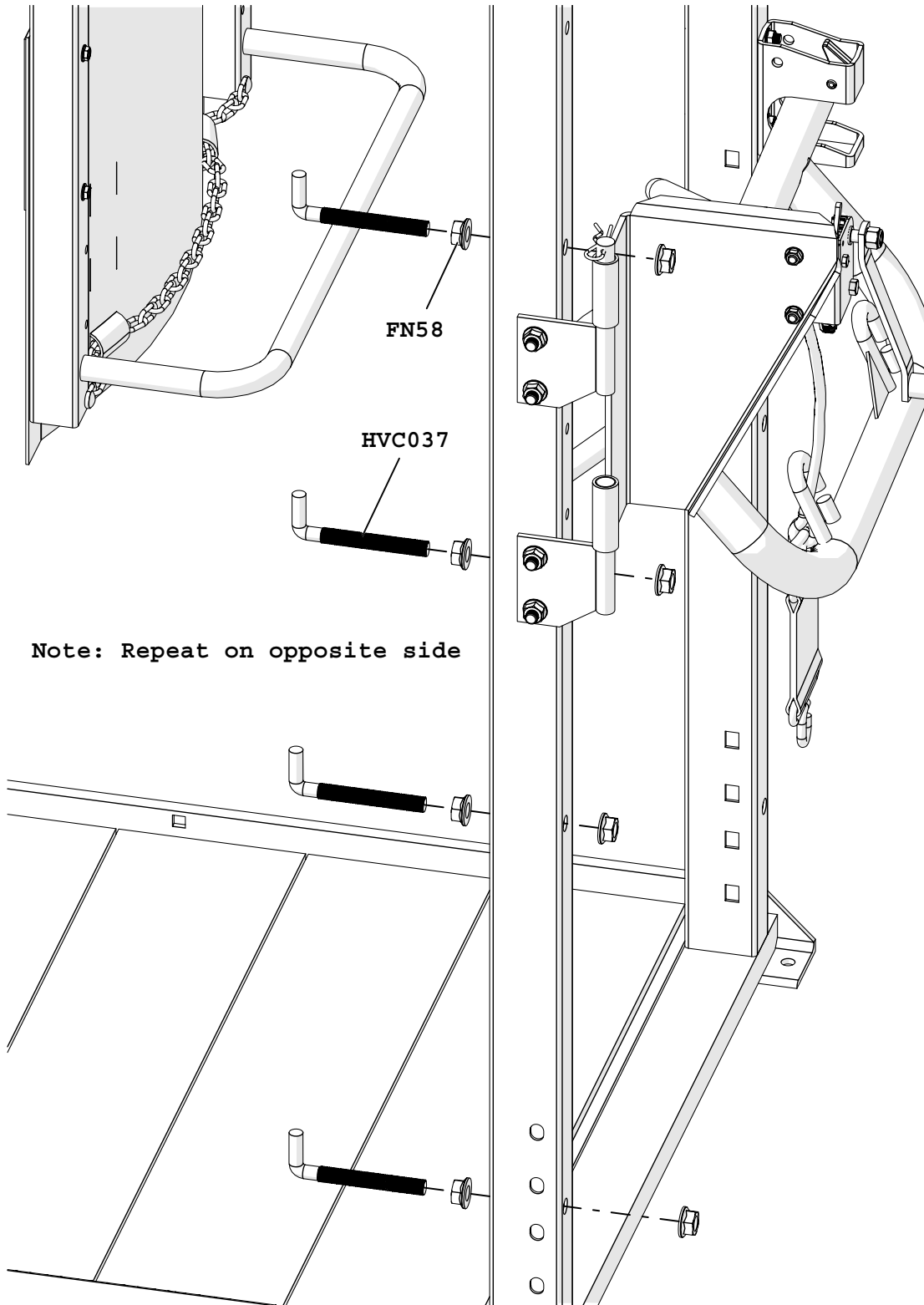
HVC12 Assembly Instructions

Step 21



HVC12 Assembly Instructions

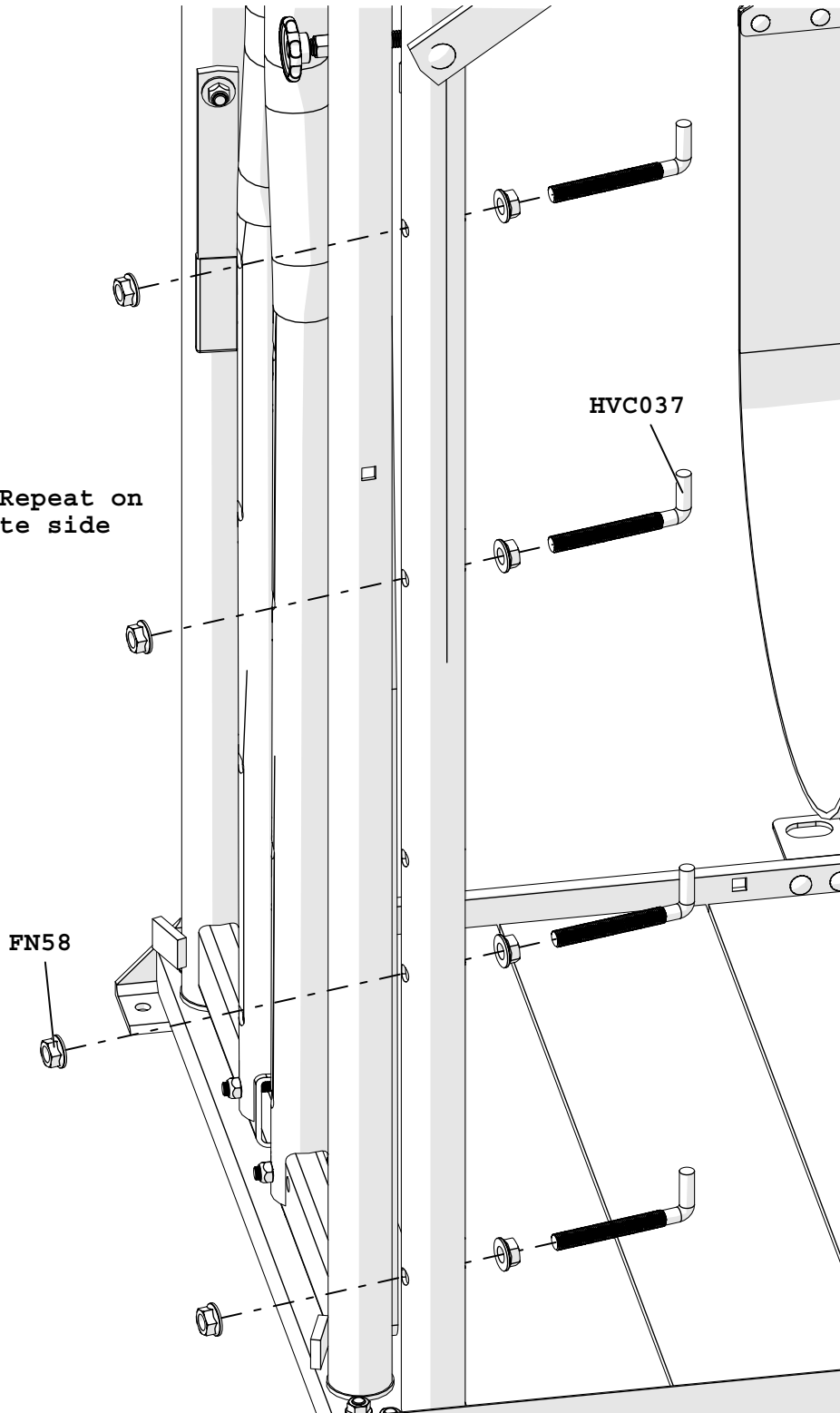
Step 22



HVC12 Assembly Instructions

Step 23

Note: Repeat on opposite side

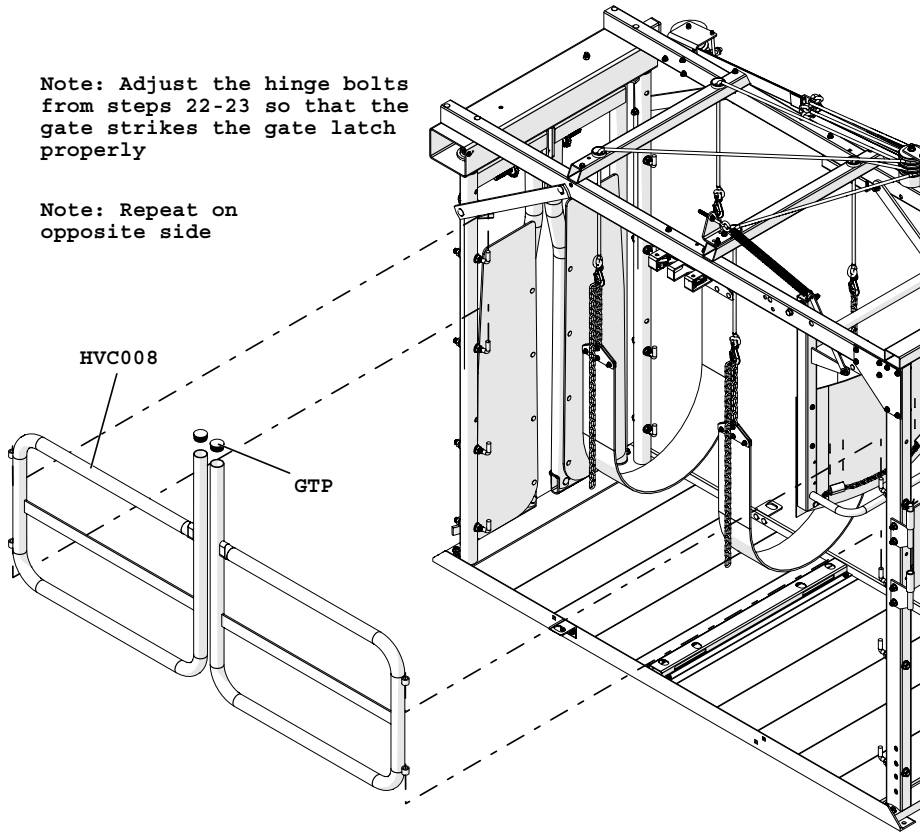


HVC12 Assembly Instructions

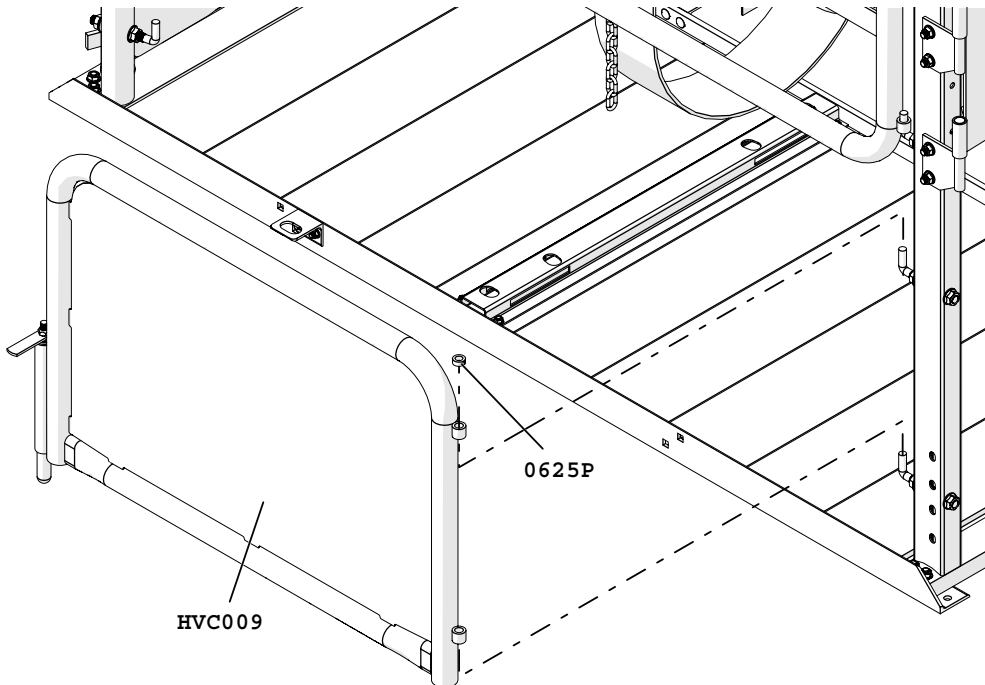
Step 24

Note: Adjust the hinge bolts from steps 22-23 so that the gate strikes the gate latch properly

Note: Repeat on opposite side



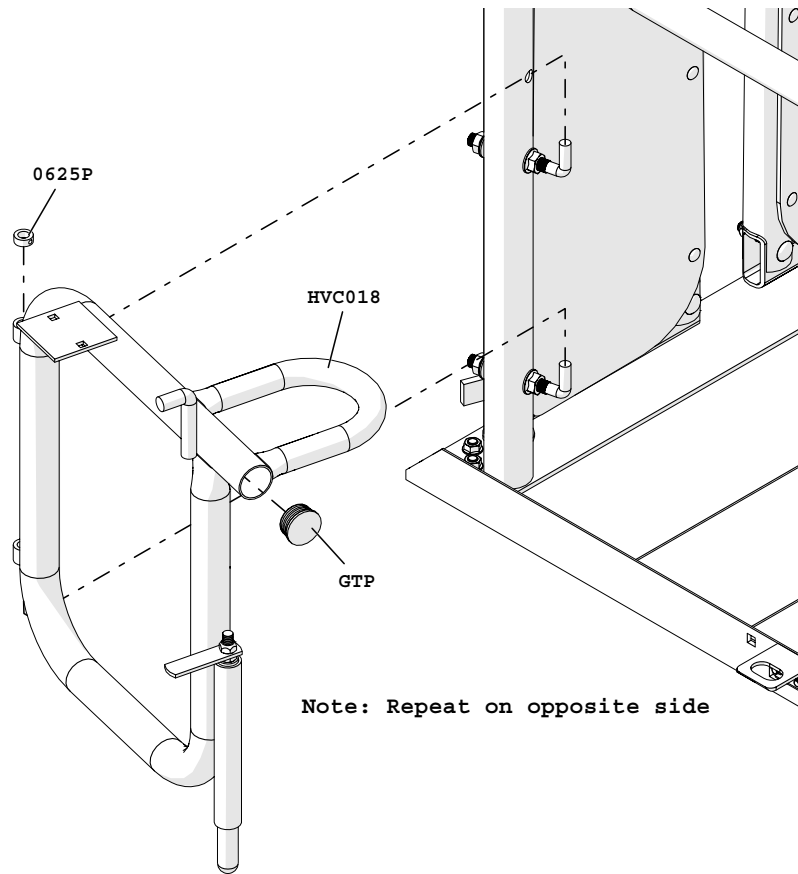
Step 25



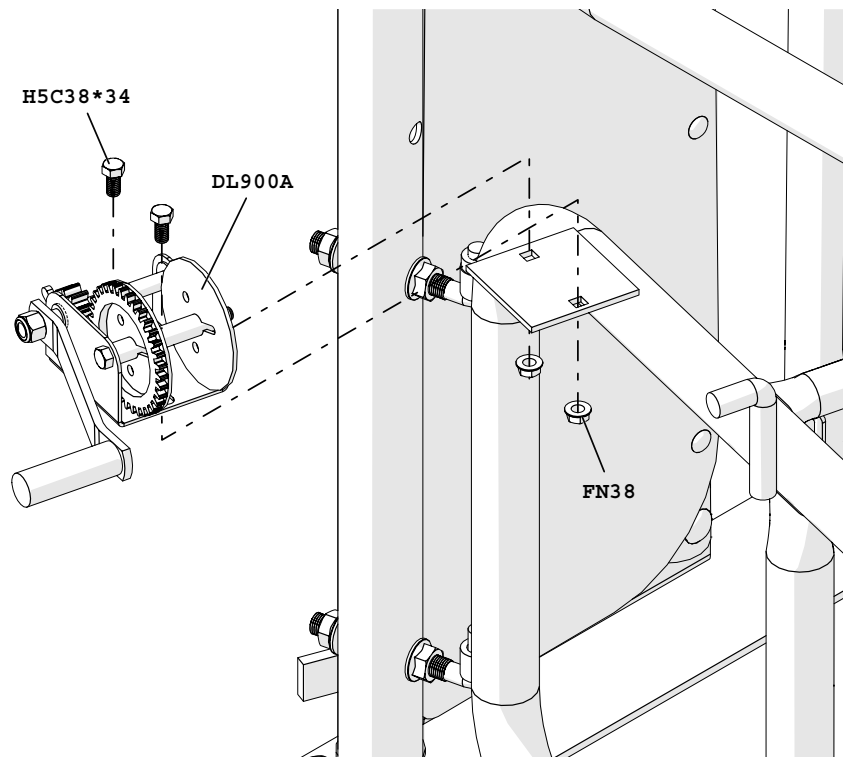
Note: Repeat on opposite side

HVC12 Assembly Instructions

Step 26

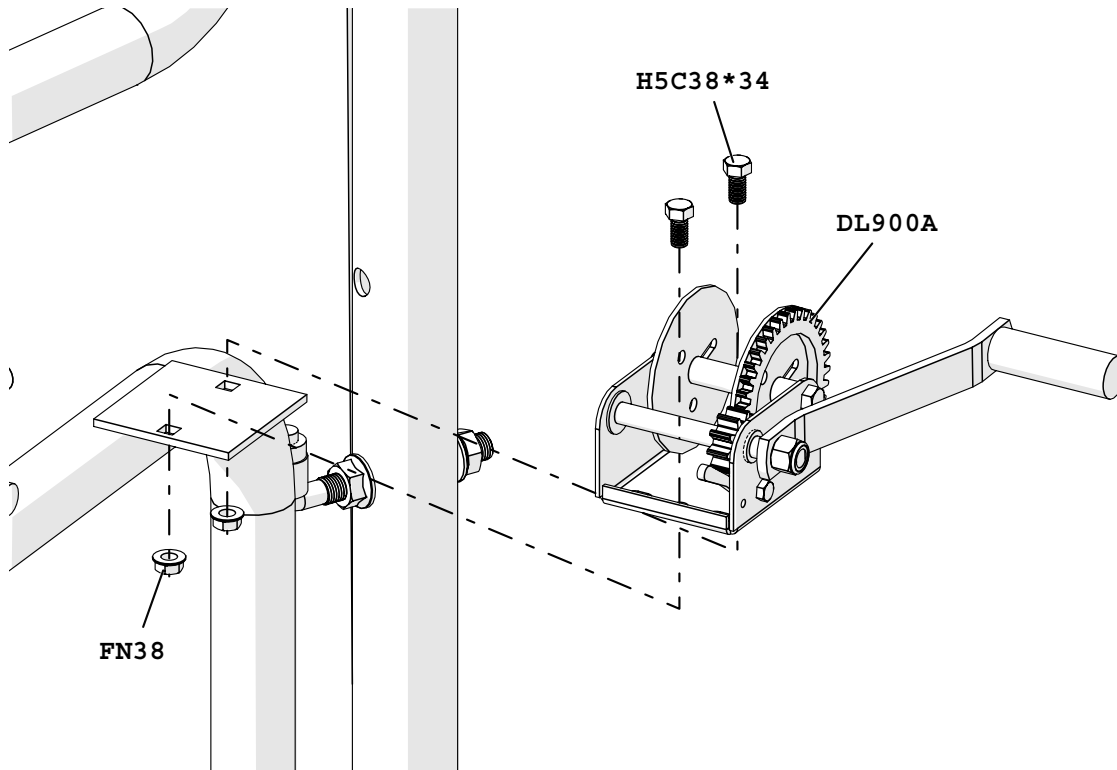


Step 27



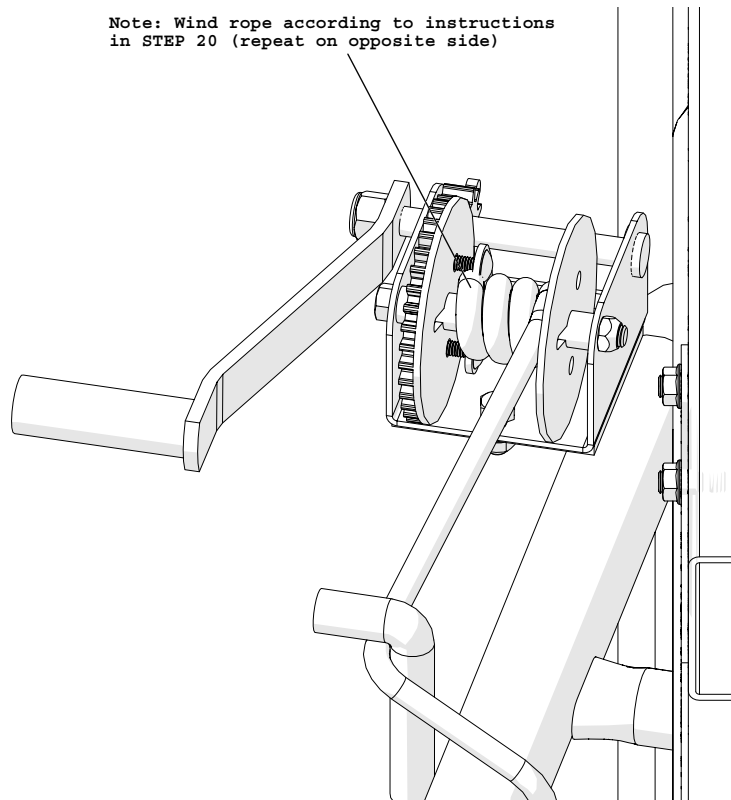
HVC12 Assembly Instructions

Step 28



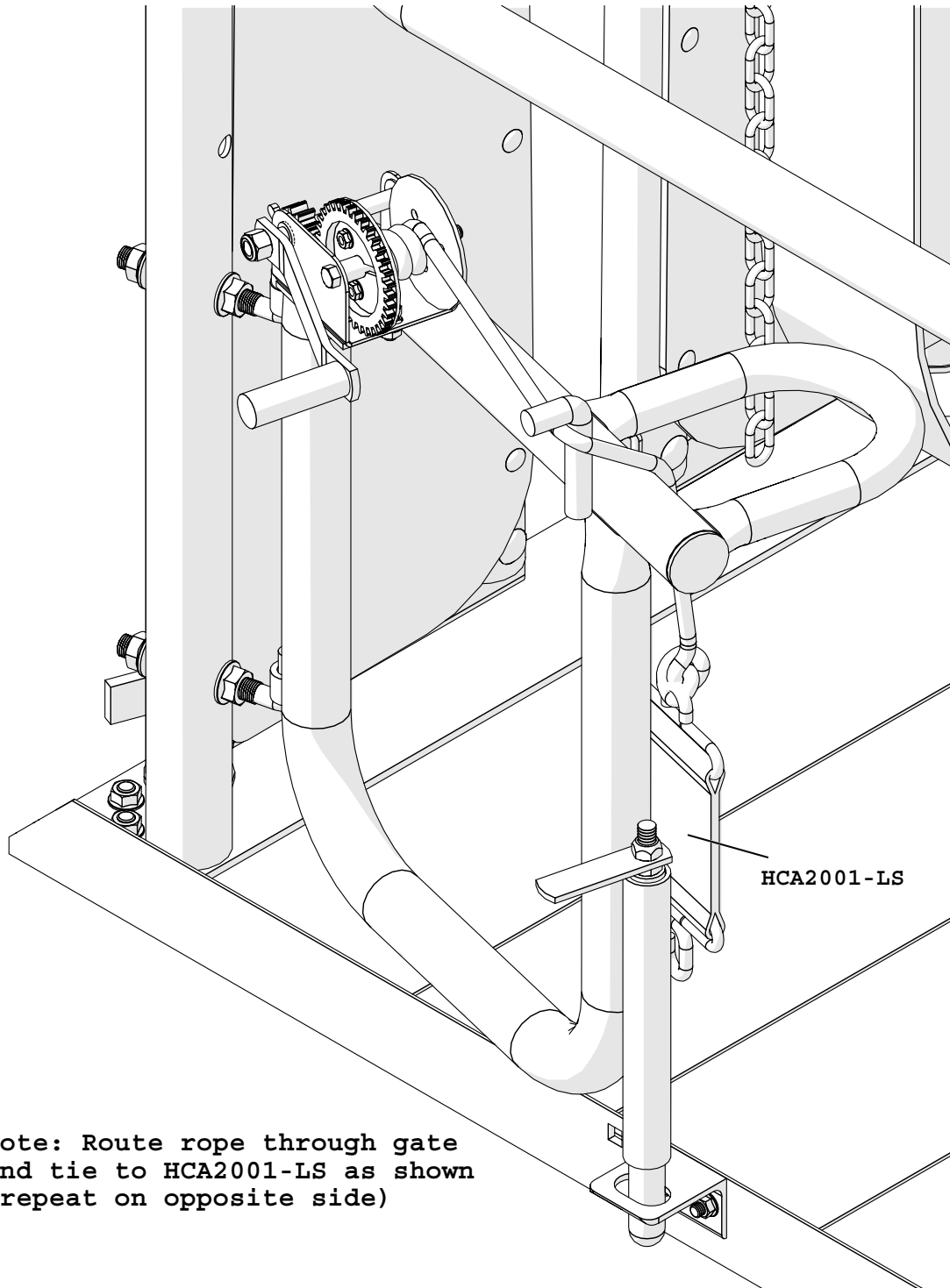
Step 29

Note: Wind rope according to instructions in STEP 20 (repeat on opposite side)



HVC12 Assembly Instructions

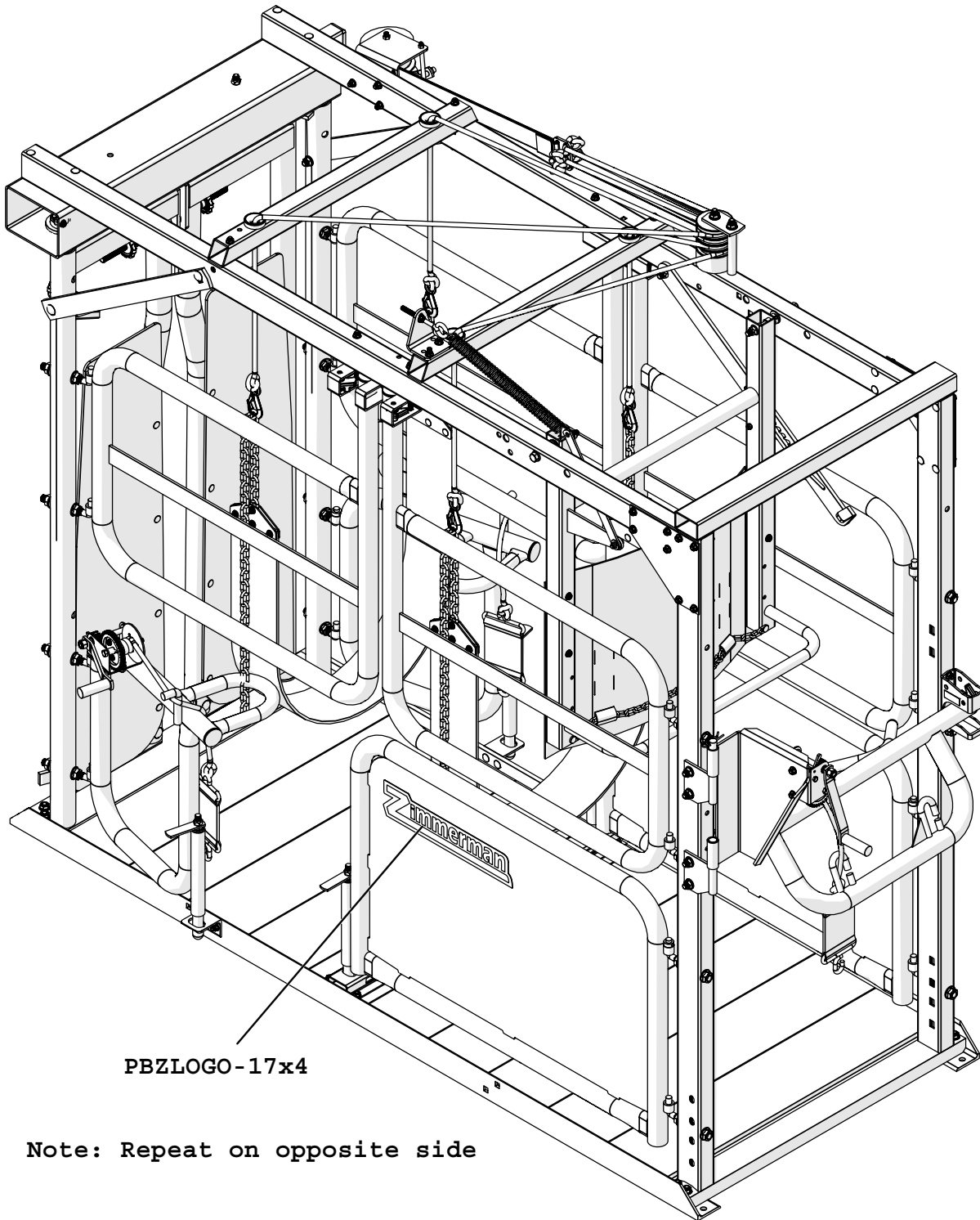
Step 30



Note: Route rope through gate and tie to HCA2001-LS as shown (repeat on opposite side)

HVC12 Assembly Instructions

Step 31



PBZLOGO-17x4

Note: Repeat on opposite side

