

Zimmerman

Cattle Control Equipment

Hoof Care / Vet Chute Parts & Assembly



Manufactured by: PBZ, LLC
259 Woodcorner Road
Lititz, PA 17543
(717) 738-7365

HHE8100

Automatic Headgate

Lubrication

Keep 4 zerks greased and adjustment threads and pivot points oiled.

Operating Adjustments

(Door in open position)

Set adjustment bolt on right side facing animal with door in open position. Animals head must be able to pass thru door opening with animal shoulders catching doors taking forward into lock position.

(Door in closed position)

With door in closed position using aluminum wheel on threaded rod, adjust door opening large enough to fit animal neck, but not so large animal can pull head back thru opening

These adjustments need not be made for each animal, only for weight variations of approximately 300 lbs.

Move lever top left or right of head gate to rear to release animal.

When animal passes thru head gate doors, move lever forward to reset doors. The gate is now ready for the next animal.

Winch Operation and Maintenance

Wind cable or rope on winch reel by turning winch handle in clockwise direction. This should produce a loud, sharp, clicking noise. The load will remain in position when the handle is released. Wind cable or rope off the winch by turning winch handle counterclockwise (no noise produced). The load will remain in position when the handle is released, but for extra security it is recommended that the handle be turned clockwise until at least two clicks are heard. This will add extra tightness to the brake mechanism. Always satisfy yourself that the winch is holding the load before releasing the winch handle.

IMPORTANT: Sufficient load must be applied to the cable or rope to overcome internal resistance and operate the brake properly, otherwise turning the crank handle counterclockwise will only remove the handle from the shaft - the reel will not turn. The minimum operating load requirement is 50 lb. for model DLB1200 and 75 lb. for model DLB2000.

In order to insure maximum performance, a periodic inspection for any necessary preventive maintenance should be made. Check at least once annually and more frequently when the winch is exposed to an environment which is particularly dirty or wet. For continued smooth performance and increased life, occasionally grease gears, reel shaft, and handle threads. An occasional drop of oil on the drive shaft bearings is also recommended. **Note: Do not oil or grease brake mechanism.**

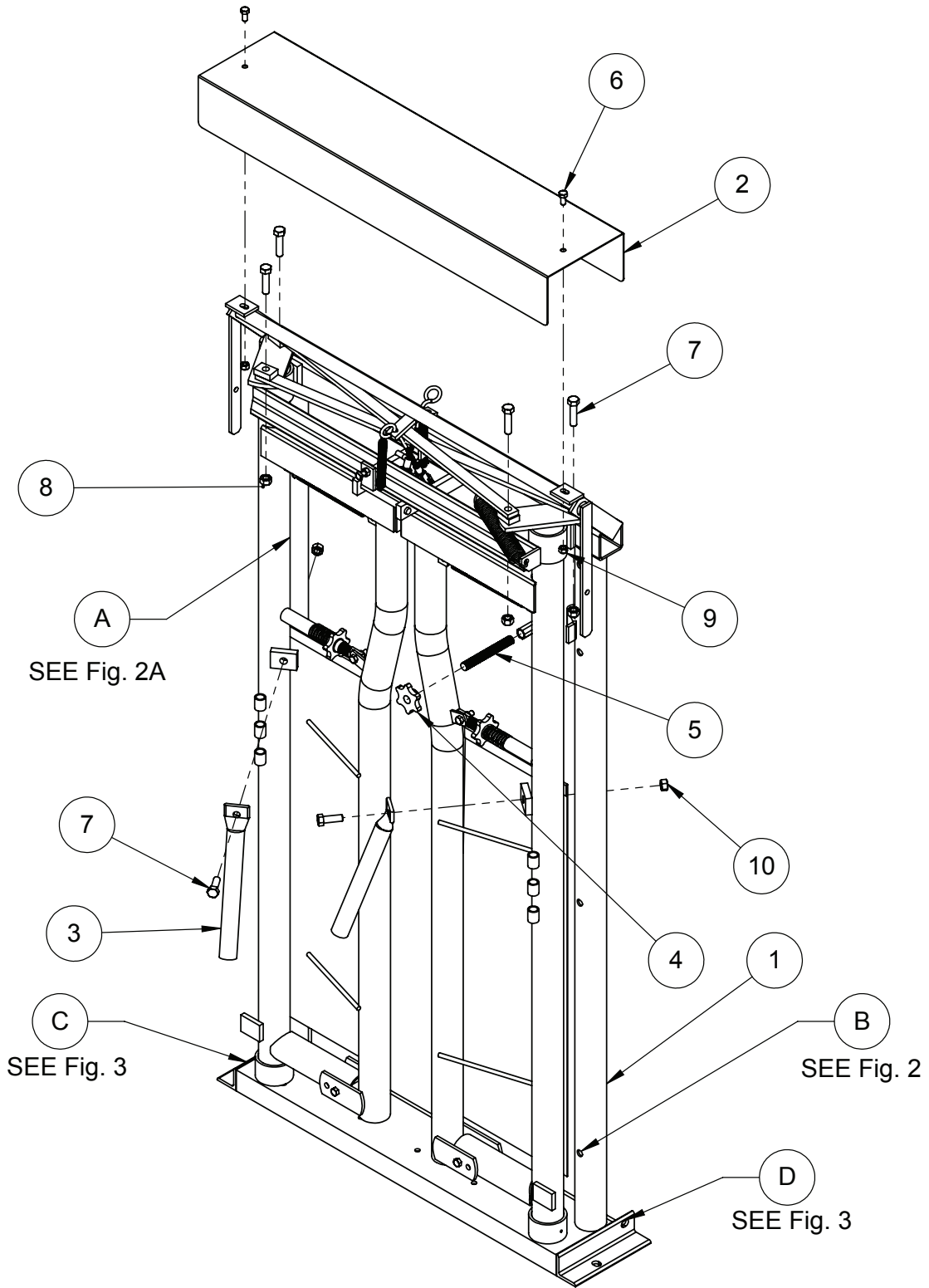


Fig. 1

HHE8100							
ITEM	QTY	PART NUMBER	DESCRIPTION	ITEM	QTY	PART NUMBER	DESCRIPTION
1	1	HHEFRAME	headgate frame	6	2	H5C38*34	3/8" x 3/4" hex bolt
2	1	8100*22	headgate roof	7	6	H5C12*2	1/2" x 5" hex bolt
3	2	8100*23	door handle	8	4	SNC12	1/2" steel lock nut
4	1	8100*17	aluminum wheel	9	2	SNC38	3/8" steel lock nut
5	1	8100*16	door adjustable bolt	10	2	NNC12	1/2" nylon lock nut

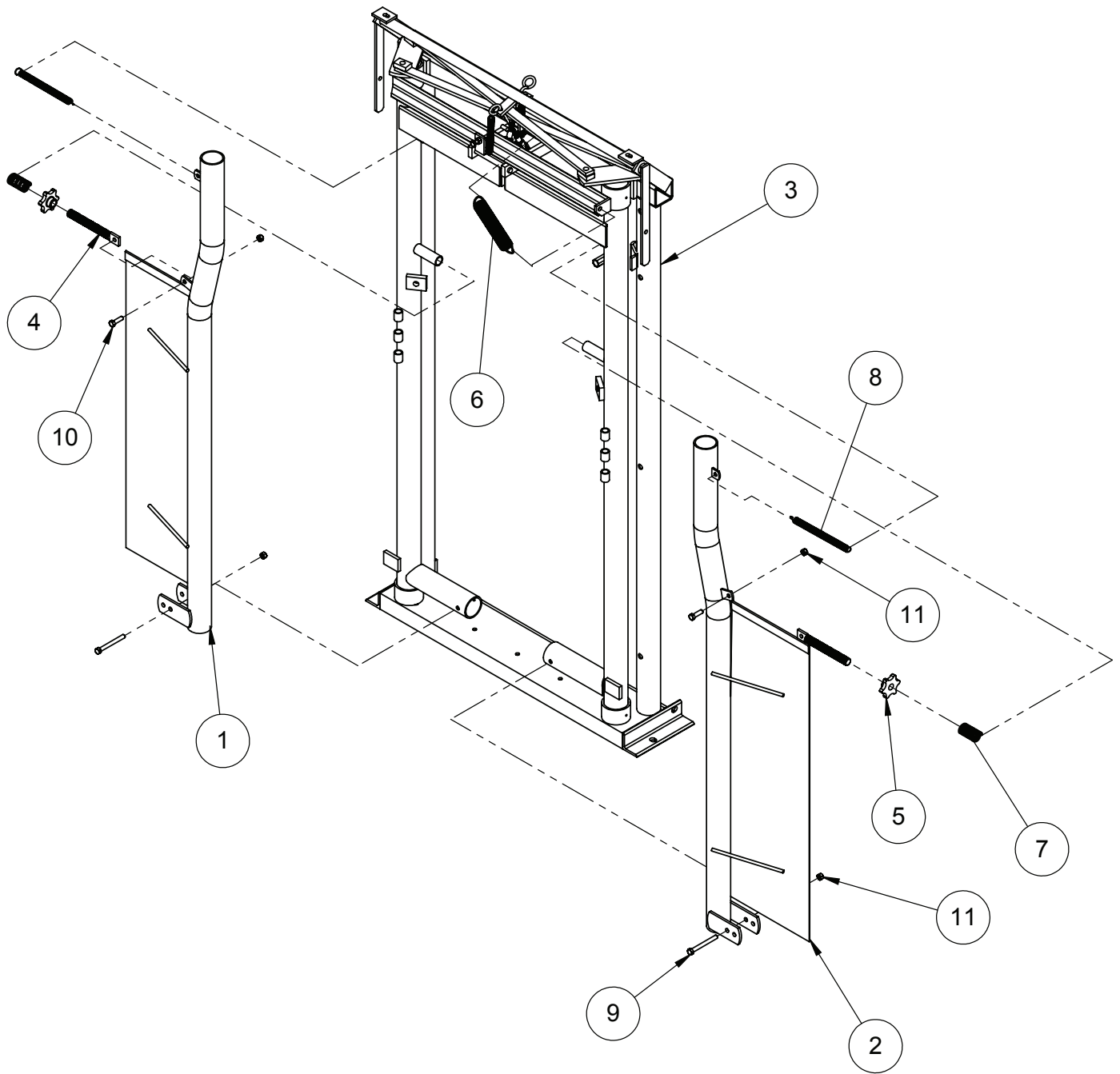


Fig. 1A

HHE8100							
ITEM	QTY	PART NUMBER	DESCRIPTION	ITEM	QTY	PART NUMBER	DESCRIPTION
1	1	HHEDOOR-R	door right	7	2	HHE1.13X2.33Z	door cushion spring
2	1	HHEDOOR-L	door left	8	2	HHE97Z	door tension spring
3	1	HHEFRAME	frame	9	2	H5C38*312	3/8" x 3 1/2" hex bolt
4	2	8100*15	door bolt	10	2	H5C38*114	3/8" x 1 1/4" hex bolt
5	2	8100*17	aluminum wheel	11	4	SNC38	3/8" steel lock nut
6	1	HHE1.13X85Z	door return spring				

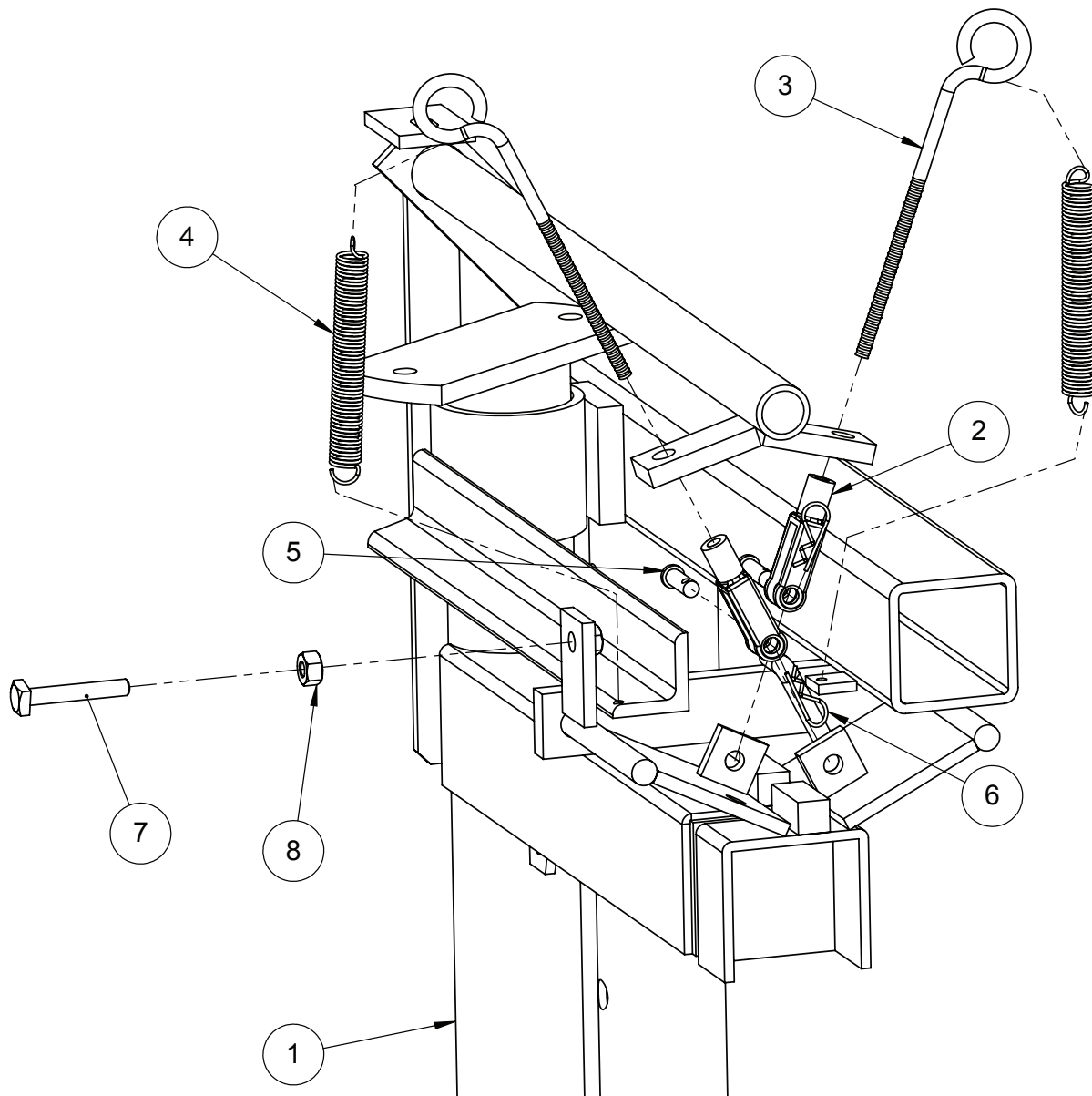


Fig. 1B

HHE8100							
ITEM	QTY	PART NUMBER	DESCRIPTION	ITEM	QTY	PART NUMBER	DESCRIPTION
1	1	HHEFRAME	frame	5	2	CP516*1	5/16" x 1" clevis pin
2	2	HHEYOKE	5/16" yoke	6	2	CP1516	1 5/16" clip pin
3	2	HHEEBOLT	5/16" x 7" eye bolt	7	1	SHS516*2	5/16" x 2" sq head screw
4	2	HHE95Z	zinc plated latch spring	8	1	NC516	5/16" hex nut

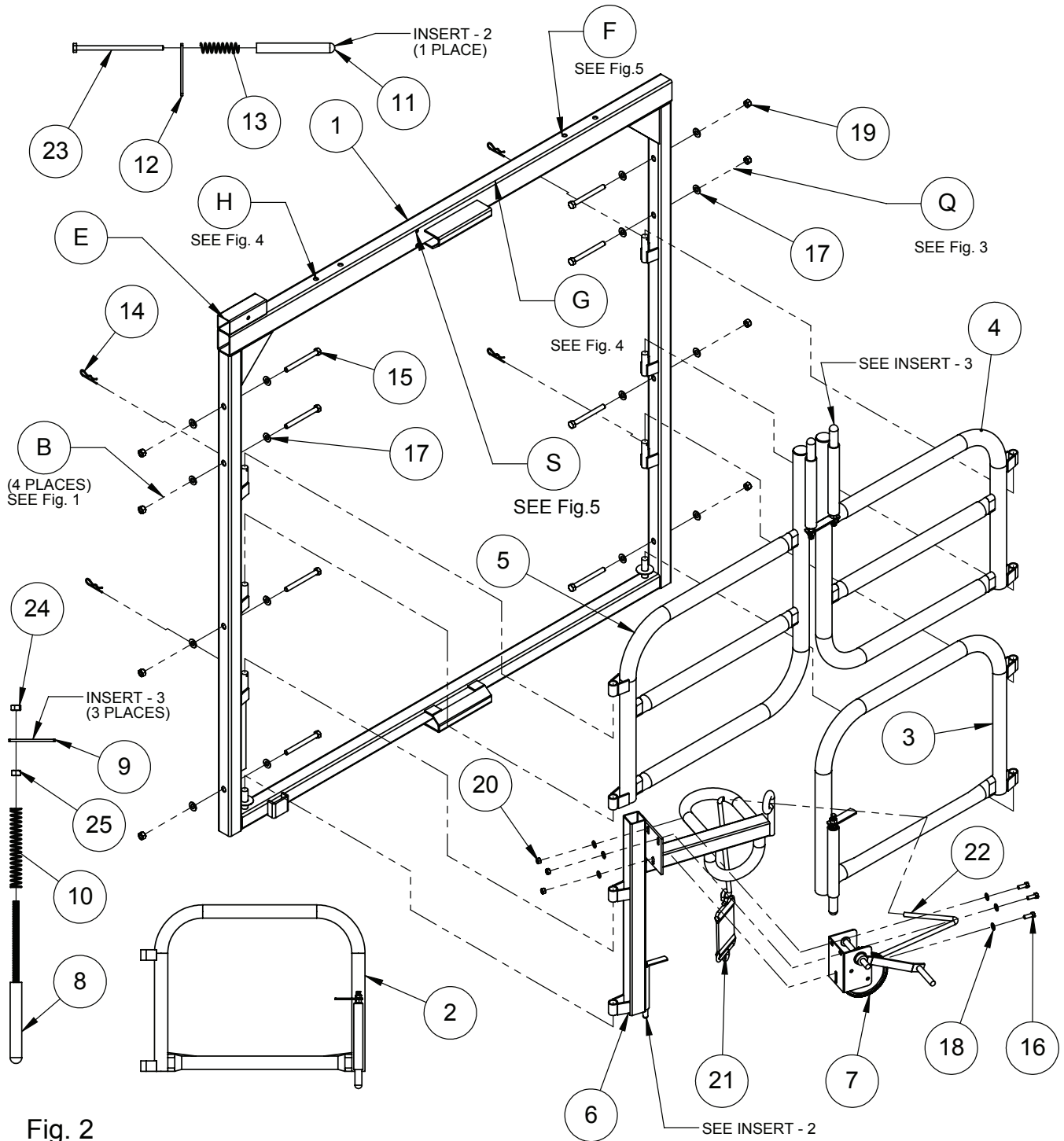


Fig. 2

HGS8115-L							
ITEM	QTY	PART NUMBER	DESCRIPTION	ITEM	QTY	PART NUMBER	DESCRIPTION
1	1	HGS8115-L	left frame	14	4	CP3	3" clip pin
2	1	HGS8114-BGL	bottom left door	15	8	H5C12*5	1/2" x 5" hex bolt
3	1	HGS8114-BGR	bottom right door	16	3	H5C38*1	3/8" x 1" hex bolt
4	1	HGS8114-TGL	top left door	17	16	FW12	1/2" flat washer
5	1	HGS8114-TGR	top right door	18	6	FW38	3/8" flat washer
6	1	HCA01FWB-R	front winch mount	19	8	NC12	1/2" hex nut
7	1	DLB800	800lb hand winch	20	3	NC38	3/8" hex nut
8	3	GLSB	spring latch bolt	21	1	HCA2001-LS	leg strap
9	3	GLSH	spring latch handle	22	6'	RSBN12	1/2" braided nylon rope
10	3	GLS675	spring latch spring	23	1	H5C14*5	1/4" x 5" hex bolt
11	1	GLSSB	small spring latch bolt	24	3	JNNC12	1/2" jam lock nut
12	1	GLSSH	small spring latch handle	25	3	SNC12	1/2" steel lock nut
13	1	GLS400	small spring latch spring				

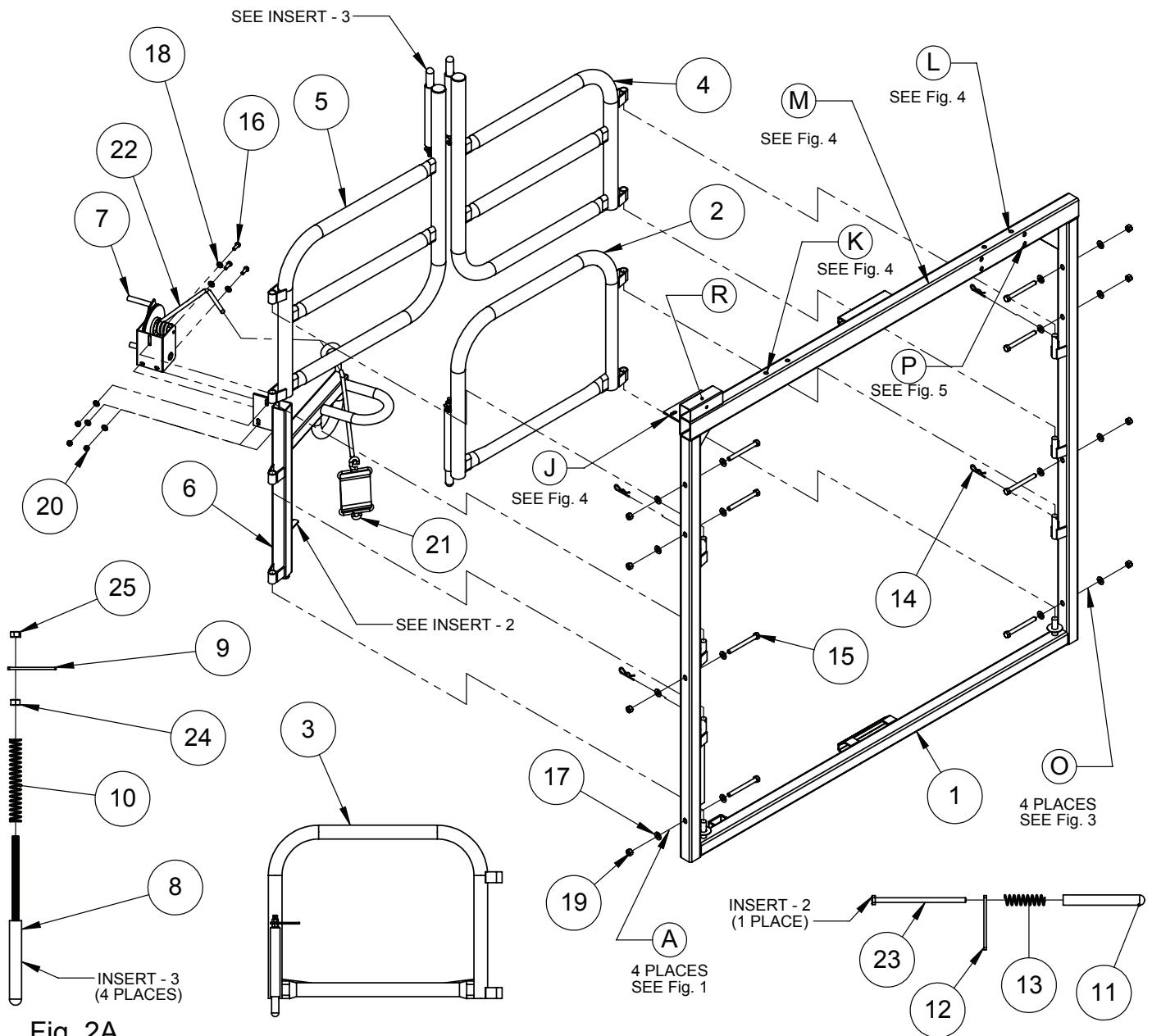


Fig. 2A

HGS8115-R							
ITEM	QTY	PART NUMBER	DESCRIPTION	ITEM	QTY	PART NUMBER	DESCRIPTION
1	1	HGS8115-R	right frame	14	4	CP3	3" clip pin
2	1	HGS8114-BGL	bottom left door	15	8	H5C12*5	1/2" x 5" hex bolt
3	1	HGS8114-BGR	bottom right door	16	3	H5C38*1	3/8" x 1" hex bolt
4	1	HGS8114-TGL	top left door	17	16	FW12	1/2" flat washer
5	1	HGS8114-TGR	top right door	18	6	FW38	3/8" flat washer
6	1	HCA01FWB-01	front winch mount	19	8	NC12	1/2" hex nut
7	1	DLB800	800lb hand winch	20	3	NC38	3/8" hex nut
8	3	GLSB	spring latch bolt	21	1	HCA2001-LS	leg strap
9	3	GLSH	spring latch handle	22	6'	RSBN12	1/2" braided nylon rope
10	3	GLS675	spring latch spring	23	1	H5C14*5	1/4" x 5" hex bolt
11	1	GLSSB	small spring latch bolt	24	3	JNNC12	1/2" jam lock nut
12	1	GLSSH	small spring latch handle	25	3	SNC12	1/2" steel lock nut
13	1	GLS400	small spring latch spring				

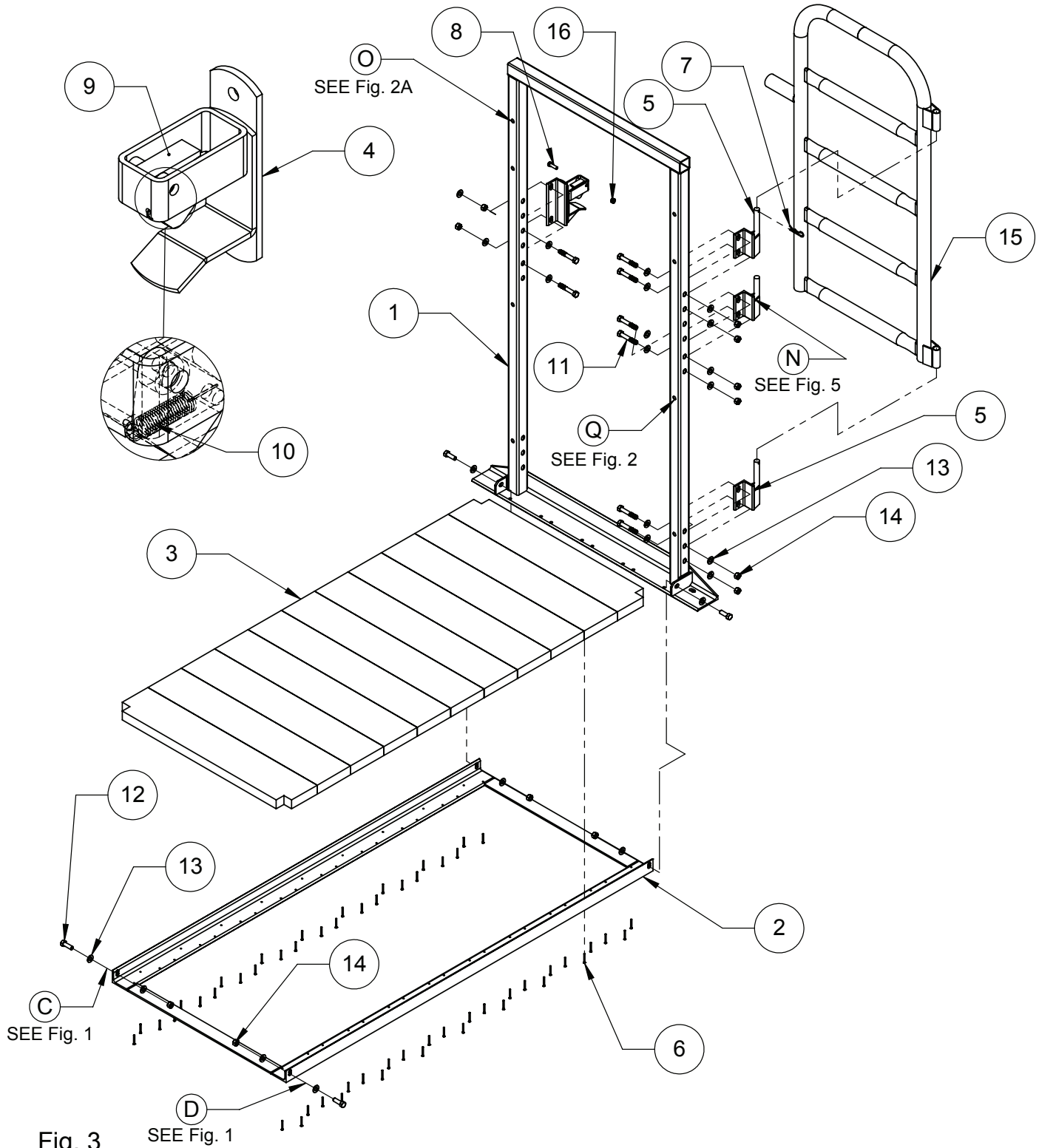


Fig. 3

FLOOR AND REAR FRAME							
ITEM	QTY	PART NUMBER	DESCRIPTION	ITEM	QTY	PART NUMBER	DESCRIPTION
1	1	HRF8115	rear frame	9	1	GLTR	gate latch tripper
2	1	HHFLOOR	floor frame	10	1	GLS200-01	gate latch spring
3	11	R9102	rubber traction plank	11	8	H5C12*3	1/2" x 3" hex bolt
4	1	HSG8149	rear swing gate latch	12	4	H5C12*112	1/2" x 1 1/2" hex bolt
5	1.5	HSG8148	rear swing gate hinge	13	24	FW12	1/2" flat washer
6	48	DSS112	#8 x 1 1/2" deck screw	14	12	NC12	1/2" hex nut
7	1	CP3	3" clip pin	15	1	HSG8150	rear swing gate
8	1	H2C38*214	3/8" x 2 1/4" hex bolt	16	1	SJNC38	3/8" jam lock nut

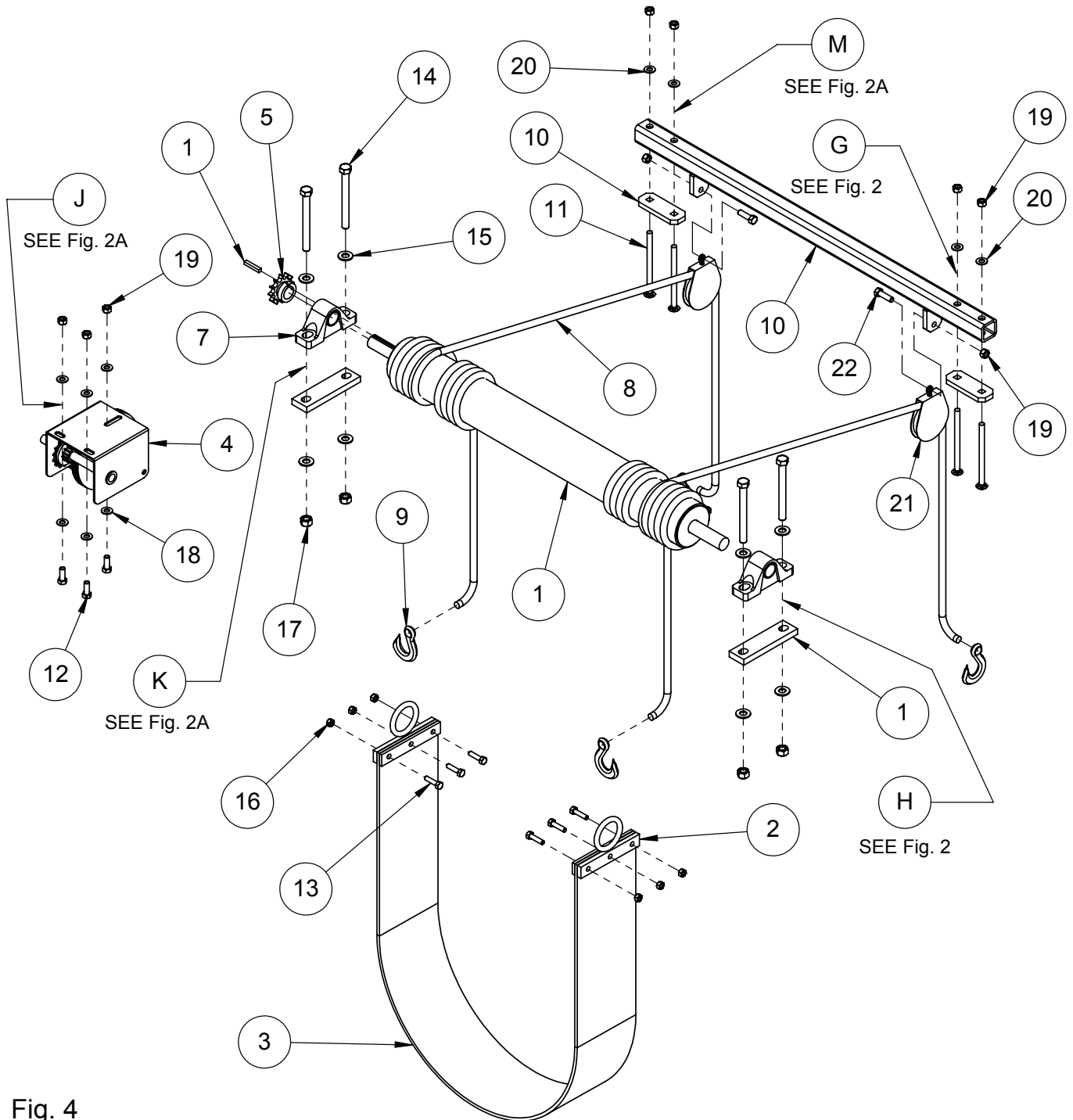


Fig. 4

4 POINT LIFT							
ITEM	QTY	PART NUMBER	DESCRIPTION	ITEM	QTY	PART NUMBER	DESCRIPTION
1	1	HCA01RS	hoof care rope spool	12	3	H5C38*1	3/8" x 1" hex bolt
2	2	HCA06BBC	belly belt clamp	13	6	H5C516*114	5/16" x 1 1/4" hex bolt
3	1	NA40424-6X65	rubber belly band	14	4	H5C12*5	1/2" x 5" hex bolt
4	1	DLB1500-S	1500lb hand winch w/sprocket	15	8	FW12	1/2" flat washer
5	1	501016	# 50 x 15 tooth sprocket	16	6	SNC516	5/16" steel lock nut
6	3'	RC50R	# 50 roller chain	17	4	NC12	1/2" hex nut
7	2	UCP205-16	bearing and spacer plate	18	6	FW38	3/8" flat washer
8		RSBN12	1/2" braided nylon	19	9	NC38	3/8" hex nut
9	4	4200425	1/4" slip hook 1 1/2" eye	20	4	LW38	3/8" lock washer
10	1	HCA01PM	bar for pulley assembly (4-pt lift)	21	2	N220004	3" sgl pulley
11	4	CB38*512	3/8" x 5 1/2" carriage bolt	22	2	H5C38*114	3/8" x 1 1/4" hex bolt

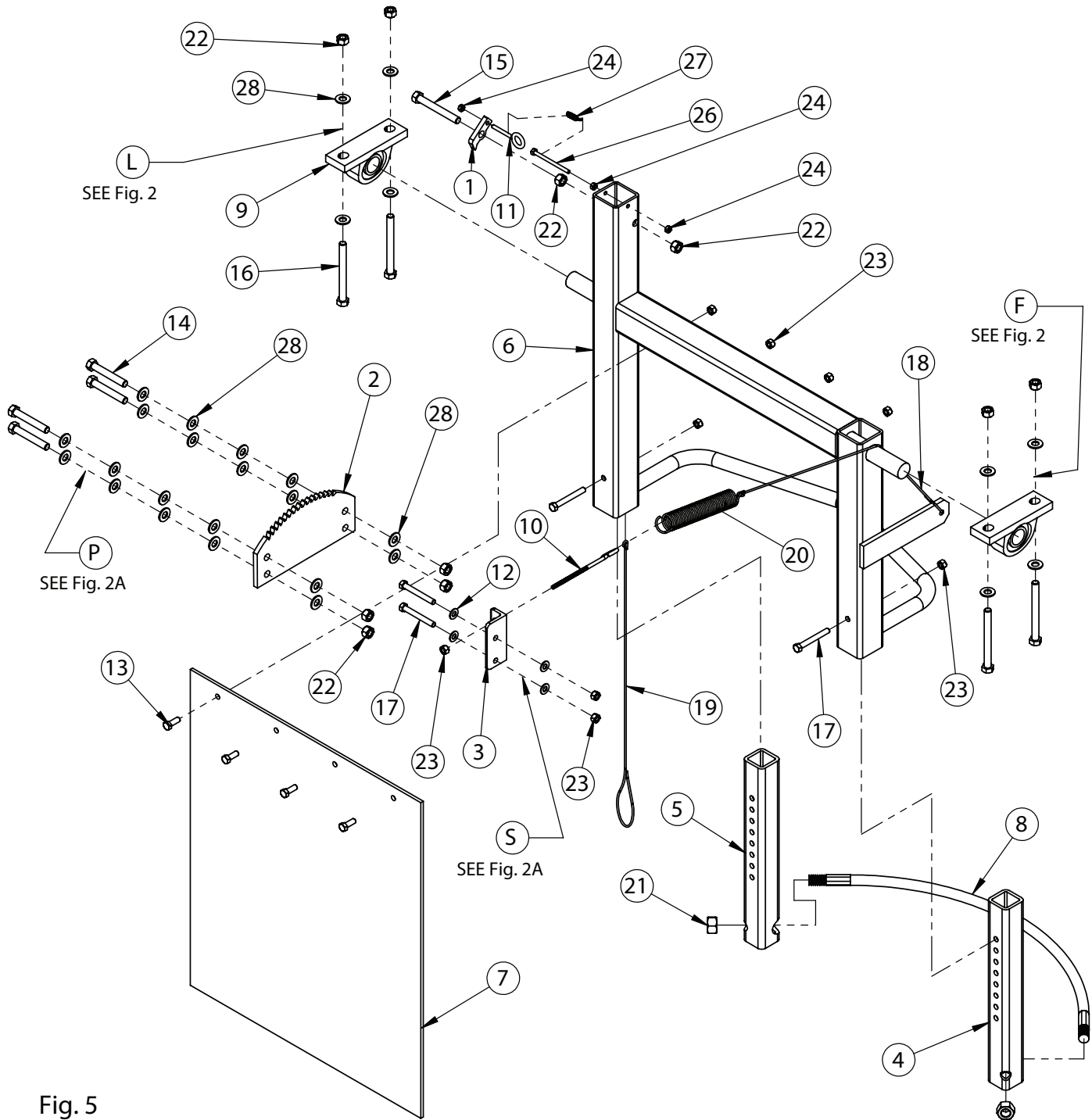


Fig. 5

HCC2008 REAR GATE							
ITEM	QTY	PART NUMBER	DESCRIPTION	ITEM	QTY	PART NUMBER	DESCRIPTION
1	1	HCA2008RS-TR	tripper	14	4	H5C12*314	1/2" x 3 1/4" hex bolt
2	1	HCA2008RS-TRPL	tripper plate	15	1	HTB12*4G5	1/4" x 4" hex tap bolt grade 5
3	1	HCA2008RS-SM	spring mount	16	4	H5C12*5	1/2" x 5" hex bolt
4	1	HCA2008RS-STR	right straight tube	17	4	H5C38*3	3/8" x 3" hex bolt
5	1	HCA2008RS-STL	left straight tube	18	2.5'	CB316G	3/16" galv aircraft cable
6	1	HCA2008RS	rear stop	19	3'	CB16C	1/16" x 3/32" vinyl coat galv cable
7	1	HCA2008RB	rubber splash guard	20	1	B116	spring 1.5" O.D. 9 1/2"
8	1	HCA2008RS-H	hose assembly	21	2	SNC34	3/4" steel lock nut
9	2	UCP206-20	power rite billow blk 1 1/4"	22	10	NC12	1/2" hex nut
10	1	N221283	3/8" x 6" eyebolt	23	10	NC38	3/8" hex nut
11	1	N221127	1/4" x 4" eyebolt	24	3	NC14	1/4" hex nut
12	4	FW38	3/8" flat washer	25	28	FW12	1/2" flat washer
13	4	H5C38*1	3/8" x 1" hex bolt	26	1	H5C14*312	1/4" x 3 1/2" hex bolt
				27	1	GL200-01	Spring for Gate Latch

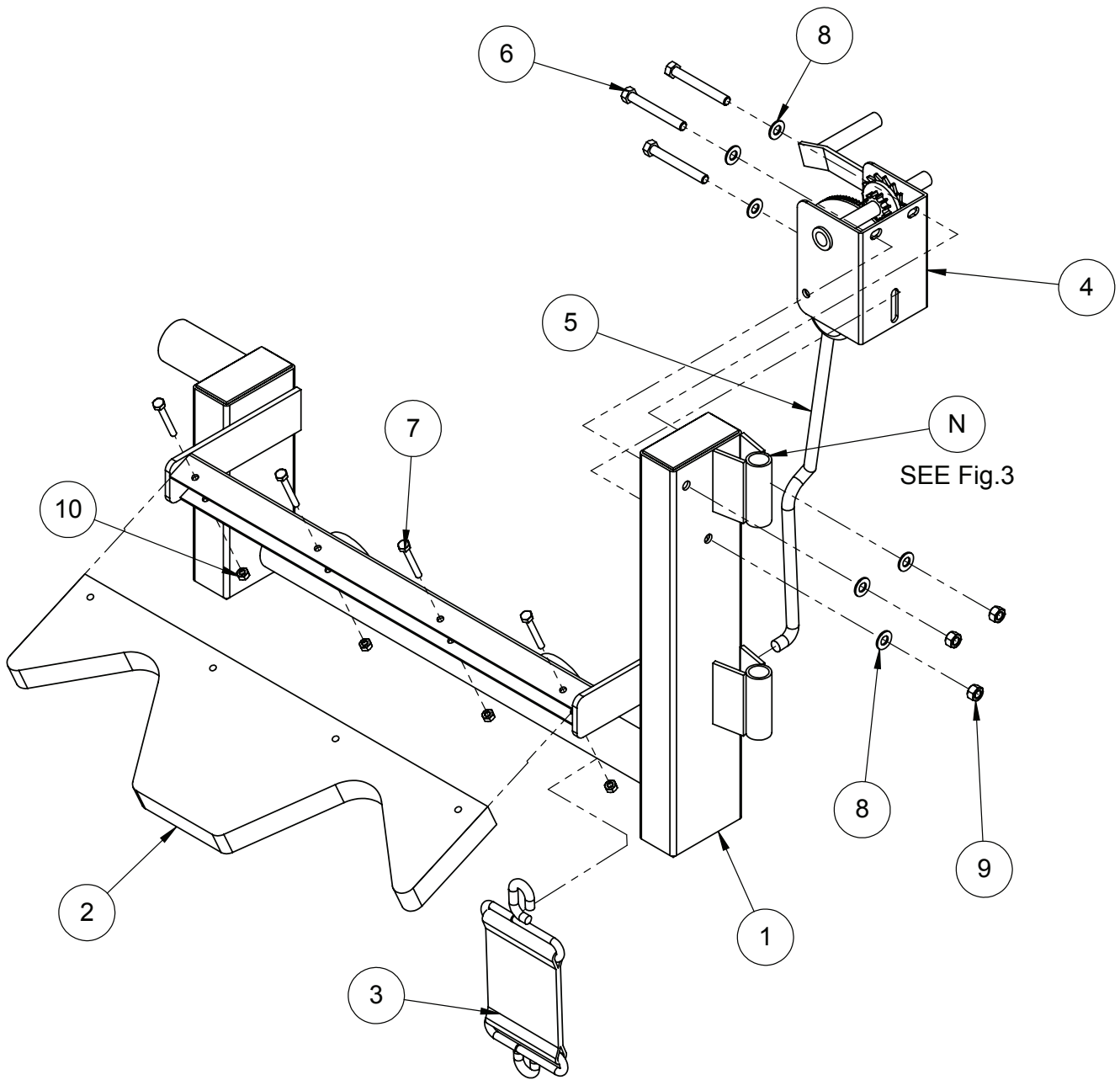


Fig. 5A

HCC2008 REAR GATE							
ITEM	QTY	PART NUMBER	DESCRIPTION	ITEM	QTY	PART NUMBER	DESCRIPTION
1	1	HCA2008RL	rear leg lifter	6	3	H5C38*3	3/8" x 3" hex bolt
2	1	HCA2008RL-RU	rumber pad - rear	7	4	H5C14*2	1/4" x 2" hex bolt
3	1	HCA2001-LS	leg strap	8	6	FW38	3/8" flat washer
4	1	DLB800	800lb hand winch	9	3	NC38	3/8" hex bolt
5	8'	*RSKR716	7/16" static rope white	10	4	NC14	1/4" hex bolt

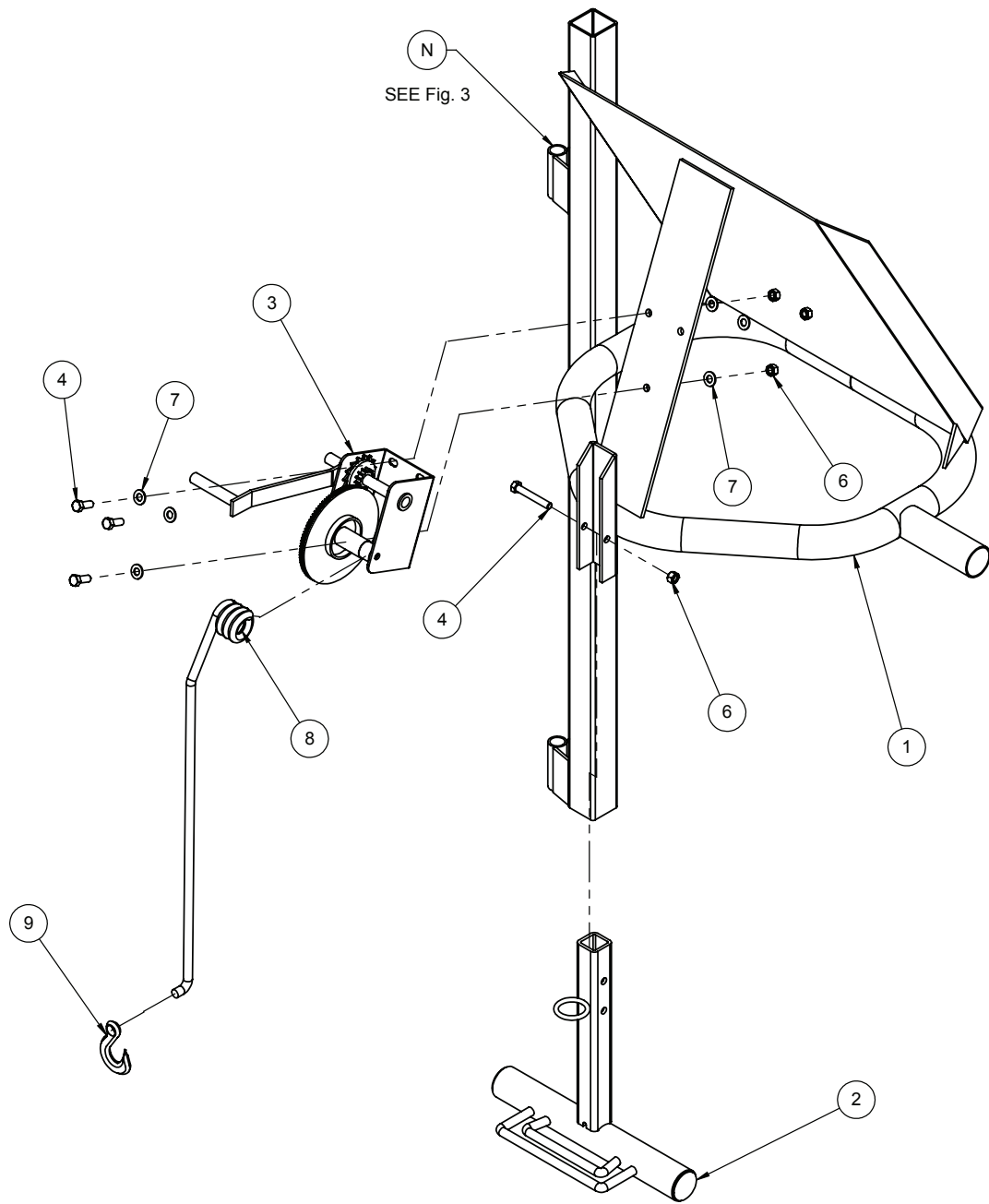


Fig. 6

HCC2001 REAR GATE			
ITEM	QTY.	PART NUMBER	DESCRIPTION
1	1	HCA01RG	hoof care rear gate
2	1	HCA06TB	t-bar
3	1	DLB800	800lb hand winch
4	3	H5C38*1	3/8" x 1" hex bolt
5	1	H5C38*212	3/8" x 2 1/2" hex bolt
6	4	NC38	3/8" hex nut
7	6	FW38	3/8" flat washer
8	6'	RSBN12	1/2" white nylon rope
9	1	4200425	1/4" slip hook, 1/2" eye

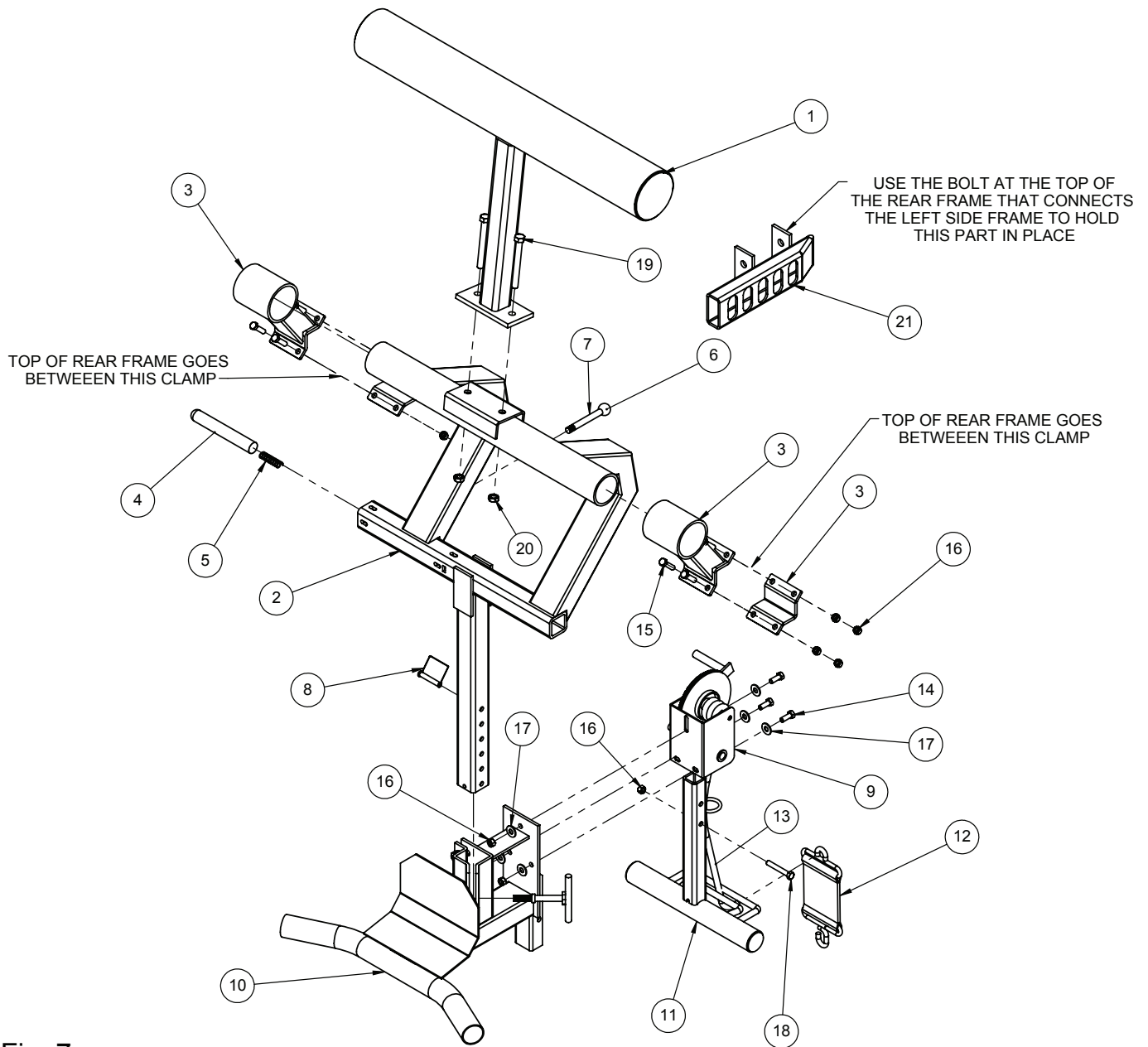


Fig. 7

HCC2006 REAR GATE							
ITEM	QTY	PART NUMBER	DESCRIPTION	ITEM	QTY	PART NUMBER	DESCRIPTION
1	1	HCA06CW	Deluxe gate counter weight	12	1	HCA2001-LS	Leg strap
2	1	HCA06MF	Deluxe gate main frame	13	1	RSBN12	1/2" braided nylon rope
3	2	HCA06HINGE	Deluxe gate hinge	14	3	H5C38*1	3/8" x 1" hex bolt
4	1	GLSB-06	Spring Bolt	15	8	H5C38*112	3/8" x 1 1/2" hex bolt
5	1	SC-475	Spring	16	12	NC38	3/8" hex bolt
6	1	KBT	Teardrop knob	17	6	FW38	3/8" flat washer
7	1	TR12*72	Threaded rod 1/2"	18	1	H5C38*212	3/8" x 2 1/2" hex bolt
8	1	00267	Square lock pin	19	2	H5C12*412	1/2" x 4 1/2" hex bolt
9	1	DLB800	800lb hand winch	20	2	NC12	1/2" hex nut
10	1	HCA06WA	Deluxe gate winch assembly	21	1	HCA06LATCH	Deluxe gate latch
11	1	HCA06TB	Deluxe gate t-bar				